



Datasheet for ABIN6136889
anti-ANKRD28 antibody (AA 1-300)



[Go to Product page](#)

1 Image

Overview

Quantity:	100 µL
Target:	ANKRD28
Binding Specificity:	AA 1-300
Reactivity:	Human
Host:	Rabbit
Clonality:	Polyclonal
Conjugate:	This ANKRD28 antibody is un-conjugated
Application:	Western Blotting (WB)

Product Details

Immunogen:	Recombinant fusion protein containing a sequence corresponding to amino acids 1-300 of human ANKRD28 (NP_056014.2).
Sequence:	MAFLKLRDQP SLVQAIFNGD PDEVRALIFK KEDVNFQDNE KRTPLHAAAY LGDAEIIELL ILSGARVNAK DSKWLTPHR AVASCSEEAV QVLLKHSADV NARDKNWQTP LHIAAANKAV KCAEALVPLL SNVNVSDRAG RTALHHAAFS GHGEMVKLLL SRGANINAFD KKDRRAIHWA AYMGHIEVVK LLVSHGAEVT CKDKKSYTPL HAAASSGMIS VVKYLLDLGV DMNEPNAYGN TPLHVACYNG QDVVVNELID CGAIVNQKNE KGFTPLHFAA ASTHGALCLE LLVGNGADVN
Isotype:	IgG
Cross-Reactivity:	Human, Mouse
Characteristics:	Polyclonal Antibodies
Purification:	Affinity purification

Target Details

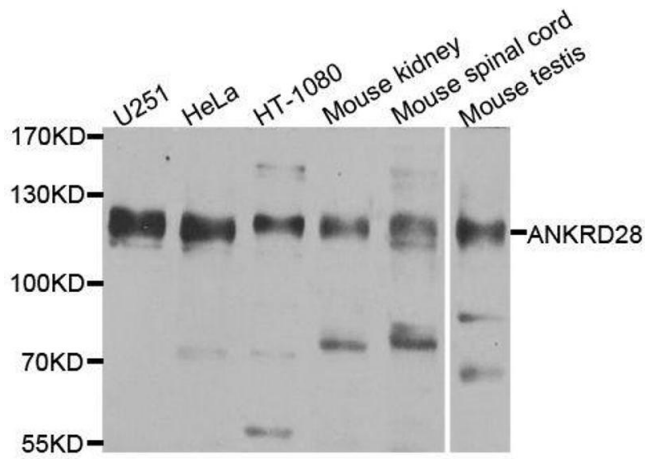
Target:	ANKRD28
Alternative Name:	ANKRD28 (ANKRD28 Products)
Background:	Putative regulatory subunit of protein phosphatase 6 (PP6 that may be involved in the recognition of phosphoprotein substrates. Involved in the PP6-mediated dephosphorylation of NFKBIE opposing its degradation in response to TNF-alpha. Selectively inhibits the phosphatase activity of PPP1C. Targets PPP1C to modulate HNRPK phosphorylation.,ANKRD28,PITK,PPP1R65,Epigenetics & Nuclear Signaling,Signal Transduction,Kinase,Cell Biology & Developmental Biology,Cell Cycle,ANKRD28
Molecular Weight:	96 kDa/112 kDa/116 kDa
Gene ID:	23243
UniProt:	O15084

Application Details

Application Notes:	WB,1:500 - 1:2000
Comment:	HIGH QUALITY
Restrictions:	For Research Use only

Handling

Format:	Liquid
Buffer:	PBS with 0.02 % sodium azide,50 % glycerol, pH 7.3.
Preservative:	Sodium azide
Precaution of Use:	This product contains Sodium azide: a POISONOUS AND HAZARDOUS SUBSTANCE which should be handled by trained staff only.
Storage:	-20 °C
Storage Comment:	Store at -20°C. Avoid freeze / thaw cycles.



Western Blotting

Image 1. Western blot analysis of extracts of various cell lines, using ANKRD28 antibody.