



[Go to Product page](#)

Datasheet for ABIN6136952

anti-alpha Adaptin antibody (AA 1-260)

3 Images

1 Publication

Overview

Quantity:	100 µL
Target:	alpha Adaptin (AP2A1)
Binding Specificity:	AA 1-260
Reactivity:	Human
Host:	Rabbit
Clonality:	Polyclonal
Conjugate:	This alpha Adaptin antibody is un-conjugated
Application:	Western Blotting (WB)

Product Details

Immunogen:	Recombinant fusion protein containing a sequence corresponding to amino acids 1-260 of human AP2A1 (NP_055018.2).
Sequence:	MPAVSKGDGM RGLAVFISDI RNCKSKEAEI KRINKELANI RSKFKGDKAL DGYSKKKYVC KLLFIFLLGH DIDFGHMEAV NLLSSNKYTE KQIGYLFISV LVNSNSELIR LINNAIKNDL ASRNPTFMCL ALHCIANVGS REMGEAFAAD IPRILVAGDS MDSVKQSAAL CLLRLYKASP DLVPMGEWTA RVVHLLNDQH MGVVTAAVSL ITCLCKKNPD DFKTCVSLAV SRLSRIVSSA STDLQDYTTY FVPAPWLSVK
Isotype:	IgG
Cross-Reactivity:	Human, Mouse, Rat
Characteristics:	Polyclonal Antibodies
Purification:	Affinity purification

Target Details

Target:	alpha Adaptin (AP2A1)
Alternative Name:	AP2A1 (AP2A1 Products)
Background:	<p>This gene encodes the alpha 1 adaptin subunit of the adaptor protein 2 (AP-2) complex found in clathrin coated vesicles. The AP-2 complex is a heterotetramer consisting of two large adaptins (alpha or beta), a medium adaptin (mu), and a small adaptin (sigma). The complex is part of the protein coat on the cytoplasmic face of coated vesicles which links clathrin to receptors in vesicles. Alternative splicing of this gene results in two transcript variants encoding two different isoforms. A third transcript variant has been described, but its full length nature has not been determined. AP2A1,ADTAA,AP2-ALPHA,CLAPA1,Signal Transduction,Cell Biology & Developmental Biology,Notch Signaling Pathway,Neuroscience,Neurodegenerative Diseases,AP2A1</p>
Molecular Weight:	105 kDa/107 kDa
Gene ID:	160
UniProt:	O95782
Pathways:	Notch Signaling , EGFR Signaling Pathway , Neurotrophin Signaling Pathway , EGFR Downregulation

Application Details

Application Notes:	WB,1:500 - 1:2000
Comment:	HIGH QUALITY
Restrictions:	For Research Use only

Handling

Format:	Liquid
Buffer:	PBS with 0.02 % sodium azide,50 % glycerol, pH 7.3.
Preservative:	Sodium azide
Precaution of Use:	This product contains Sodium azide: a POISONOUS AND HAZARDOUS SUBSTANCE which should be handled by trained staff only.
Storage:	-20 °C
Storage Comment:	Store at -20°C. Avoid freeze / thaw cycles.

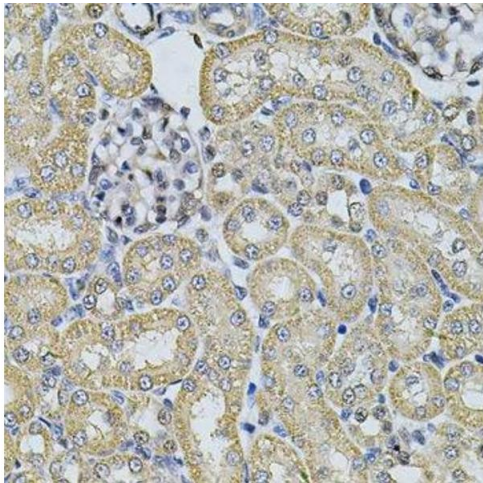
Publications

Product cited in:

Chen, Li, Li, Feng, Liu, Wang, Dai, Xia, Lu, Zhou, Guo: "15-Deoxy- Δ 12,14-prostaglandin J2 alleviates hepatic ischemia-reperfusion injury in mice via inducing antioxidant response and inhibiting apoptosis and autophagy." in: **Acta pharmacologica Sinica**, Vol. 38, Issue 5, pp. 672-687, (2018) ([PubMed](#)).

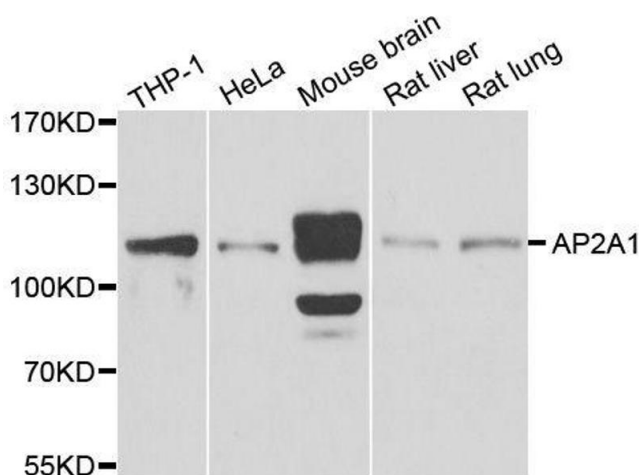
Zhang, Liu, Xue, Ma, Liu, Li, Li, Liu: "Endothelial Monocyte-Activating Polypeptide-II Induces BNIP3-Mediated Mitophagy to Enhance Temozolomide Cytotoxicity of Glioma Stem Cells via Down-Regulating MiR-24-3p." in: **Frontiers in molecular neuroscience**, Vol. 11, pp. 92, (2018) ([PubMed](#)).

Images



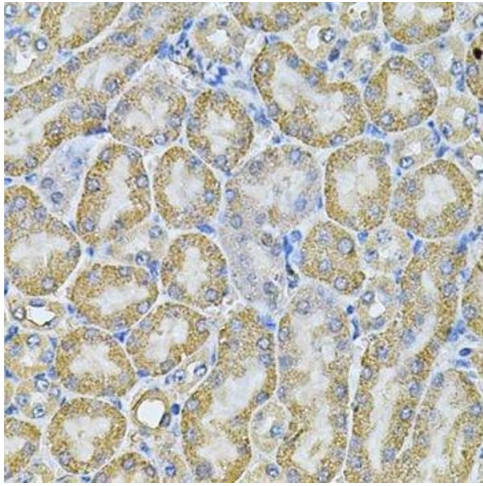
Immunohistochemistry (Paraffin-embedded Sections)

Image 1. Immunohistochemistry of paraffin-embedded rat kidney using AP2A1 Antibody.



Western Blotting

Image 2. Western blot analysis of extracts of various cell lines, using AP2A1 antibody.



Immunohistochemistry (Paraffin-embedded Sections)

Image 3. Immunohistochemistry of paraffin-embedded mouse kidney using AP2A1 Antibody.