



[Go to Product page](#)

Datasheet for ABIN6136978
anti-APEH antibody (AA 1-260)

2 Images

Overview

Quantity:	100 µL
Target:	APEH
Binding Specificity:	AA 1-260
Reactivity:	Human
Host:	Rabbit
Clonality:	Polyclonal
Conjugate:	This APEH antibody is un-conjugated
Application:	Western Blotting (WB), Immunoprecipitation (IP)

Product Details

Immunogen:	Recombinant fusion protein containing a sequence corresponding to amino acids 1-260 of human APEH (NP_001631.3).
Sequence:	MERQVLLSEP EAAAALYRGL SRQPALSAAC LGPEVTTQYG GQYRTVHTEW TQRDLERMEN IRFCRQYLVF HDGDSVVFAG PAGNSVETRG ELLSRESPSG TMKAVLRKAG GTGPGEEKQF LEVWEKNRKL KSFNLSALEK HGPVYEDDCF GCLSWSHSET HLLYVAEKKR PKAESFFQTK ALDVSASDDE IARLKKPDQA IKGDQFVFYE DWGENMVSKS IPVLCVLDVE SGNISVLEGV PENVSPGQAF WAPGDAGVVF
Isotype:	IgG
Cross-Reactivity:	Human, Mouse, Rat
Characteristics:	Polyclonal Antibodies
Purification:	Affinity purification

Target Details

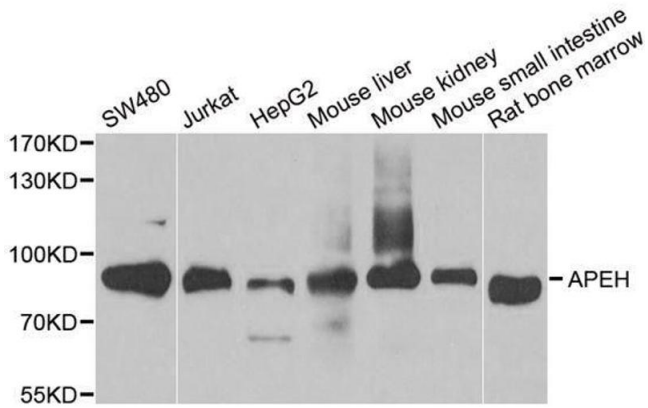
Target:	APEH
Alternative Name:	APEH (APEH Products)
Background:	<p>This gene encodes the enzyme acylpeptide hydrolase, which catalyzes the hydrolysis of the terminal acetylated amino acid preferentially from small acetylated peptides. The acetyl amino acid formed by this hydrolase is further processed to acetate and a free amino acid by an aminoacylase. This gene is located within the same region of chromosome 3 (3p21) as the aminoacylase gene, and deletions at this locus are also associated with a decrease in aminoacylase activity. The acylpeptide hydrolase is a homotetrameric protein of 300 kDa with each subunit consisting of 732 amino acid residues. It can play an important role in destroying oxidatively damaged proteins in living cells. Deletions of this gene locus are found in various types of carcinomas, including small cell lung carcinoma and renal cell carcinoma.,APEH,AARE,ACPH,APH,D3F15S2,D3S48E,DNF15S2,OPH,Epigenetics & Nuclear Signaling,RNA Binding,Cancer,Tumor suppressors,Cell Biology & Developmental Biology,Ubiquitin,APEH</p>
Molecular Weight:	81 kDa
Gene ID:	327
UniProt:	P13798

Application Details

Application Notes:	WB,1:500 - 1:2000,IP,1:20 - 1:50
Comment:	HIGH QUALITY
Restrictions:	For Research Use only

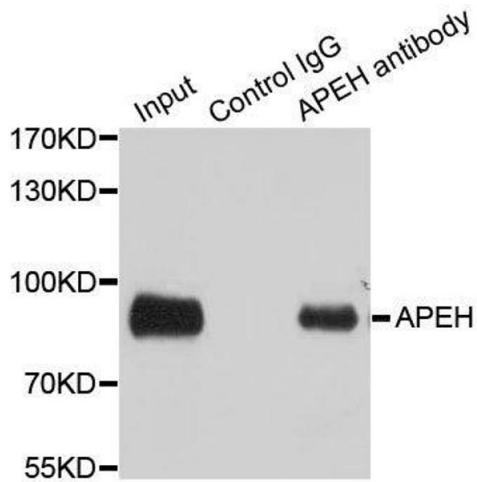
Handling

Format:	Liquid
Buffer:	PBS with 0.02 % sodium azide,50 % glycerol, pH 7.3.
Preservative:	Sodium azide
Precaution of Use:	This product contains Sodium azide: a POISONOUS AND HAZARDOUS SUBSTANCE which should be handled by trained staff only.
Storage:	-20 °C
Storage Comment:	Store at -20°C. Avoid freeze / thaw cycles.



Western Blotting

Image 1. Western blot analysis of extracts of various cell lines, using APEH antibody.



Immunoprecipitation

Image 2. Immunoprecipitation analysis of 100ug extracts of SW480 cells using 3ug APEH antibody.