



[Go to Product page](#)

Datasheet for ABIN6136993
anti-APLP1 antibody (AA 39-300)

4 Images

Overview

Quantity:	100 µL
Target:	APLP1
Binding Specificity:	AA 39-300
Reactivity:	Human
Host:	Rabbit
Clonality:	Polyclonal
Conjugate:	This APLP1 antibody is un-conjugated
Application:	Western Blotting (WB), Immunohistochemistry (IHC), Immunofluorescence (IF)

Product Details

Immunogen:	Recombinant fusion protein containing a sequence corresponding to amino acids 39-300 of human APLP1 (NP_005157.1).
Sequence:	SLAGGSPGAA EAPGSAQVAG LCGRLTLHRD LRTGRWEPDP QSRRLCLRDP QRVLEYCRQM YPELQIARVE QATQAIPMER WCGGSRSGSC AHPHHQVVPF RCLPGEFVSE ALLVPEGCRF LHQRMDQCE SSTRRHQEAQ EACSSQGLIL HGSGMLLPCG SDRFRGVEYV CCPPPGTDPD SGTAVGDPST RSWPPGSRVE GADEEEEEES FPQPVDYFV EPPQAEETEEE TVPPSSHTL AVVGKVTPTP RPTDGVDIYF GM
Isotype:	IgG
Cross-Reactivity:	Human, Mouse, Rat
Characteristics:	Polyclonal Antibodies
Purification:	Affinity purification

Target Details

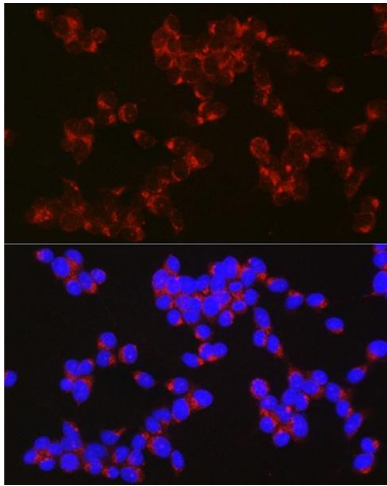
Target:	APLP1
Alternative Name:	APLP1 (APLP1 Products)
Background:	<p>This gene encodes a member of the highly conserved amyloid precursor protein gene family. The encoded protein is a membrane-associated glycoprotein that is cleaved by secretases in a manner similar to amyloid beta A4 precursor protein cleavage. This cleavage liberates an intracellular cytoplasmic fragment that may act as a transcriptional activator. The encoded protein may also play a role in synaptic maturation during cortical development. Alternatively spliced transcript variants encoding different isoforms have been described.,APLP1,APLP,Cell Biology & Developmental Biology,Apoptosis,Neuroscience,Neurodegenerative Diseases,Amyloid Plaque and Neurofibrillary Tangle Formation in Alzheimer's Disease,APLP1</p>
Molecular Weight:	72 kDa
Gene ID:	333
UniProt:	P51693
Pathways:	cAMP Metabolic Process

Application Details

Application Notes:	WB,1:500 - 1:2000,IHC,1:50 - 1:200,IF,1:10 - 1:100
Comment:	HIGH QUALITY
Restrictions:	For Research Use only

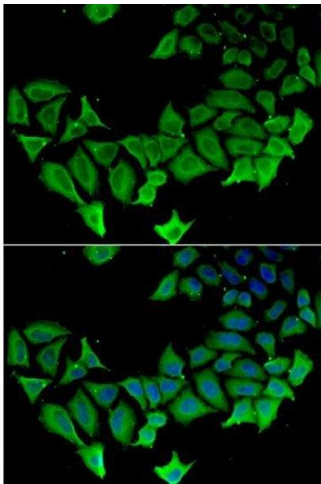
Handling

Format:	Liquid
Buffer:	PBS with 0.02 % sodium azide,50 % glycerol, pH 7.3.
Preservative:	Sodium azide
Precaution of Use:	This product contains Sodium azide: a POISONOUS AND HAZARDOUS SUBSTANCE which should be handled by trained staff only.
Storage:	-20 °C
Storage Comment:	Store at -20°C. Avoid freeze / thaw cycles.



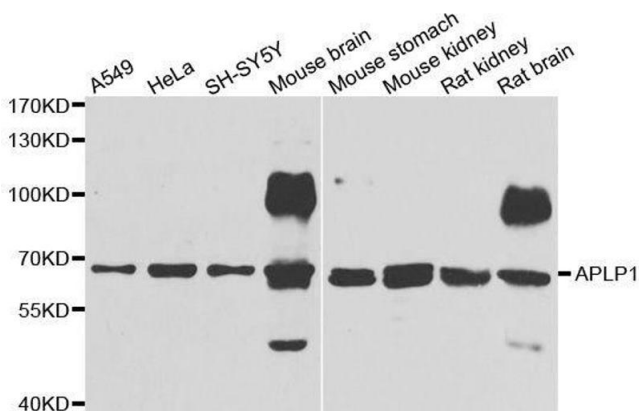
Immunofluorescence

Image 1. Immunofluorescence analysis of SH-SY5Y cells using Rabbit pAb (ABIN6129958, ABIN6136993, ABIN6136994 and ABIN6222595) at dilution of 1:50 (40x lens). Blue: DAPI for nuclear staining.



Immunofluorescence

Image 2. Immunofluorescence analysis of HeLa cells using APLP1 antibody.



Western Blotting

Image 3. Western blot analysis of extracts of various cell lines, using APLP1 antibody.

Please check the [product details page](#) for more images. Overall 4 images are available for ABIN6136993.