



[Go to Product page](#)

Datasheet for ABIN6137008

anti-APOBEC3D antibody (AA 207-386)

1 Image

Overview

Quantity:	100 µL
Target:	APOBEC3D
Binding Specificity:	AA 207-386
Reactivity:	Human
Host:	Rabbit
Clonality:	Polyclonal
Conjugate:	This APOBEC3D antibody is un-conjugated
Application:	Western Blotting (WB)

Product Details

Immunogen:	Recombinant fusion protein containing a sequence corresponding to amino acids 207-386 of human APOBEC3D (NP_689639.2).
Sequence:	AMYPHIFYFH FKLLKACGR NESWLCFTME VTKHHSVFR KRGVFRNQVD PETHCHAERC FLSWFCDDIL SPNTNYEVTW YTSWSPCPEC AGEVAEFLAR HSNVNLTIPT ARLCYFWDTD YQEGLCSLSQ EGASVKIMGY KDFVSCWKNF VYSDDEPFKP WKGLQTNFRL LKRRRLREILQ
Isotype:	IgG
Cross-Reactivity:	Human, Mouse, Rat
Characteristics:	Polyclonal Antibodies
Purification:	Affinity purification

Target Details

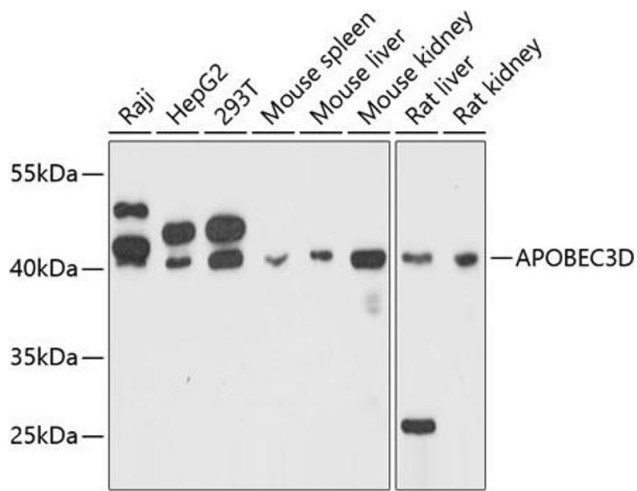
Target:	APOBEC3D
Alternative Name:	APOBEC3D (APOBEC3D Products)
Background:	<p>This gene is a member of the cytidine deaminase gene family. It is one of a group of related genes found in a cluster, thought to result from gene duplication, on chromosome 22. Members of the cluster encode proteins that are structurally and functionally related to the C to U RNA-editing cytidine deaminase APOBEC1 and inhibit retroviruses, such as HIV, by deaminating cytosine residues in nascent retroviral</p> <p>cDNA.,APOBEC3D,A3D,APOBEC3DE,APOBEC3E,ARP6,Epigenetics & Nuclear Signaling,Cell Biology & Developmental Biology,APOBEC3D</p>
Molecular Weight:	46 kDa
Gene ID:	140564
UniProt:	Q96AK3

Application Details

Application Notes:	WB,1:500 - 1:2000
Restrictions:	For Research Use only

Handling

Format:	Liquid
Buffer:	PBS with 0.02 % sodium azide,50 % glycerol, pH 7.3.
Preservative:	Sodium azide
Precaution of Use:	This product contains Sodium azide: a POISONOUS AND HAZARDOUS SUBSTANCE which should be handled by trained staff only.
Storage:	-20 °C
Storage Comment:	Store at -20°C. Avoid freeze / thaw cycles.



Western Blotting

Image 1. Western blot analysis of extracts of various cell lines, using D antibody (ABIN6129930, ABIN6137008, ABIN6137009 and ABIN6215339) at 1:3000 dilution. Secondary antibody: HRP Goat Anti-Rabbit IgG (H+L) (ABIN1684268 and ABIN3020597) at 1:10000 dilution. Lysates/proteins: 25 µg per lane. Blocking buffer: 3 % nonfat dry milk in TBST. Detection: ECL Basic Kit (RM00020). Exposure time: 60s.