

Datasheet for ABIN6137030  
**anti-Apolipoprotein M antibody (AA 23-188)**



[Go to Product page](#)

4 Images

Overview

Quantity:	100 µL
Target:	Apolipoprotein M (APOM)
Binding Specificity:	AA 23-188
Reactivity:	Human
Host:	Rabbit
Clonality:	Polyclonal
Conjugate:	This Apolipoprotein M antibody is un-conjugated
Application:	Western Blotting (WB), Immunohistochemistry (IHC), Immunofluorescence (IF)

Product Details

Immunogen:	Recombinant fusion protein containing a sequence corresponding to amino acids 23-188 of human ApoM (NP_061974.2).
Sequence:	CPEHSQLTTL GVDGKEFPEV HLGQWYFIAG AAPTKEELAT FDPVDNIVFN MAAGSAPMQL HLRATIRMKD GLCVPRKIWIY HLTEGSTDLR TEGRPDMKTE LFSSSCPGGI MLNETGQGYQ RFLLYNRSPH PPEKCVVEEFK SLTSCLDKA FLLTPRNQEA CELSNN
Isotype:	IgG
Cross-Reactivity:	Human, Mouse, Rat
Characteristics:	Polyclonal Antibodies
Purification:	Affinity purification

## Target Details

---

Target:	Apolipoprotein M (APOM)
Alternative Name:	APOM ( <a href="#">APOM Products</a> )
Background:	<p>The protein encoded by this gene is an apolipoprotein and member of the lipocalin protein family. It is found associated with high density lipoproteins and to a lesser extent with low density lipoproteins and triglyceride-rich lipoproteins. The encoded protein is secreted through the plasma membrane but remains membrane-bound, where it is involved in lipid transport. Alternate splicing results in both coding and non-coding variants of this gene.,APOM,G3a,HSPC336,NG20,apo-M,Cancer,Signal Transduction,Endocrine &amp; Metabolism,Lipid</p> <p>Metabolism,Cardiovascular,Heart,Lipids,Lipoproteins/Apolipoproteins,Cardiovascular diseases,Heart disease,APOM</p>
Molecular Weight:	13 kDa/21 kDa
Gene ID:	55937
UniProt:	<a href="#">O95445</a>

## Application Details

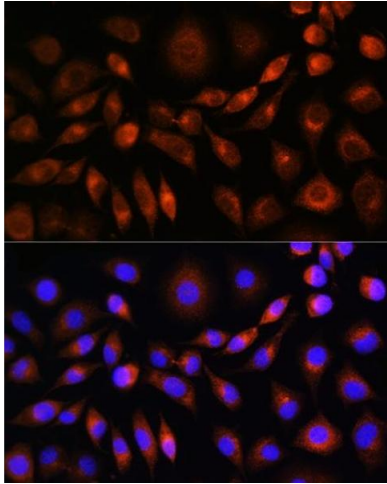
---

Application Notes:	WB,1:500 - 1:2000,IHC,1:50 - 1:200,IF,1:50 - 1:200
Comment:	HIGH QUALITY
Restrictions:	For Research Use only

## Handling

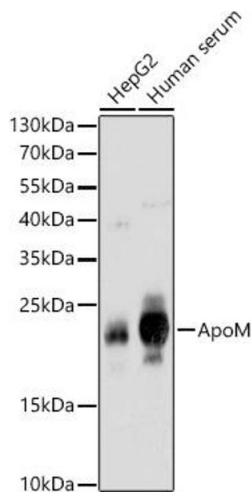
---

Format:	Liquid
Buffer:	PBS with 0.02 % sodium azide,50 % glycerol, pH 7.3.
Preservative:	Sodium azide
Precaution of Use:	This product contains Sodium azide: a POISONOUS AND HAZARDOUS SUBSTANCE which should be handled by trained staff only.
Storage:	-20 °C
Storage Comment:	Store at -20°C. Avoid freeze / thaw cycles.



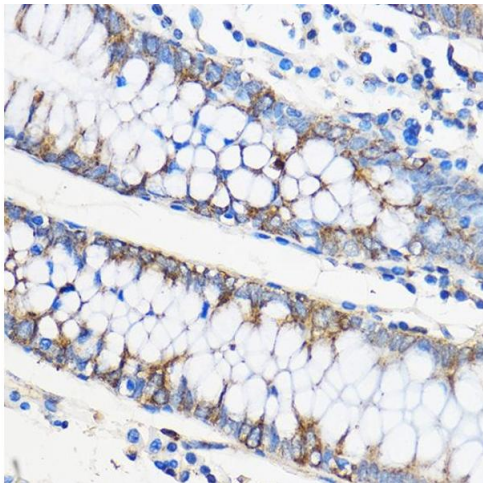
### Immunofluorescence

**Image 1.** Immunofluorescence analysis of L929 cells using ApoM Rabbit pAb (ABIN6127365, ABIN6137030, ABIN6137031 and ABIN6220968) at dilution of 1:100. Blue: DAPI for nuclear staining.



### Western Blotting

**Image 2.** Western blot analysis of extracts of various cell lines, using ApoM antibody (ABIN6127365, ABIN6137030, ABIN6137031 and ABIN6220968) at 1:1000 dilution. Secondary antibody: HRP Goat Anti-Rabbit IgG (H+L) (ABIN1684268 and ABIN3020597) at 1:10000 dilution. Lysates/proteins: 25 µg per lane. Blocking buffer: 3 % nonfat dry milk in TBST. Detection: ECL Basic Kit (RM00020). Exposure time: 30s.



### Immunohistochemistry

**Image 3.** Immunohistochemistry of paraffin-embedded Human colon using ApoM Rabbit pAb (ABIN6127365, ABIN6137030, ABIN6137031 and ABIN6220968) at dilution of 1:50 (40x lens). Perform microwave antigen retrieval with 10 mM PBS buffer pH 7.2 before commencing with IHC staining protocol.

Please check the [product details page](#) for more images. Overall 4 images are available for ABIN6137030.