

Datasheet for ABIN6137055
anti-AQP9 antibody (AA 50-150)[Go to Product page](#)

2 Images

Overview

Quantity:	100 µL
Target:	AQP9
Binding Specificity:	AA 50-150
Reactivity:	Human
Host:	Rabbit
Clonality:	Polyclonal
Conjugate:	This AQP9 antibody is un-conjugated
Application:	Western Blotting (WB), Immunohistochemistry (IHC)

Product Details

Immunogen:	A synthetic peptide corresponding to a sequence within amino acids 50-150 of human AQP9 (NP_066190.2).
Sequence:	SRGRFGGVIT INVGFMAVA MAIYVAGGVS GGHINPAVSL AMCLFGRMKW FKLPFYVGAQ FLGAFVGAAT VFGIYYDGLM SFAGGKLLIV GENATAHIFA T
Isotype:	IgG
Cross-Reactivity:	Human, Mouse, Rat
Characteristics:	Polyclonal Antibodies
Purification:	Affinity purification

Target Details

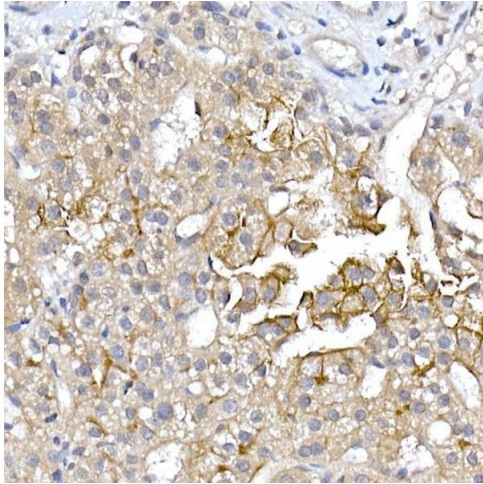
Target:	AQP9
Alternative Name:	AQP9 (AQP9 Products)
Background:	The aquaporins are a family of water-selective membrane channels. This gene encodes a member of a subset of aquaporins called the aquaglyceroporins. This protein allows passage of a broad range of noncharged solutes and also stimulates urea transport and osmotic water permeability. This protein may also facilitate the uptake of glycerol in hepatic tissue . The encoded protein may also play a role in specialized leukocyte functions such as immunological response and bactericidal activity. Alternate splicing results in multiple transcript variants.,AQP9,AQP-9,HsT17287,SSC1,T17287,Cancer,Signal Transduction,Endocrine & Metabolism,AQP9
Molecular Weight:	31 kDa
Gene ID:	366
UniProt:	O43315

Application Details

Application Notes:	WB,1:500 - 1:2000,IHC,1:50 - 1:200
Comment:	HIGH QUALITY
Restrictions:	For Research Use only

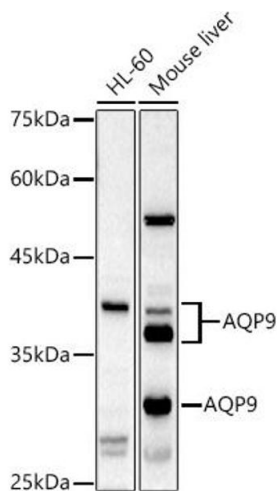
Handling

Format:	Liquid
Buffer:	PBS with 0.02 % sodium azide,50 % glycerol, pH 7.3.
Preservative:	Sodium azide
Precaution of Use:	This product contains Sodium azide: a POISONOUS AND HAZARDOUS SUBSTANCE which should be handled by trained staff only.
Storage:	-20 °C
Storage Comment:	Store at -20°C. Avoid freeze / thaw cycles.



Immunohistochemistry

Image 1. Immunohistochemistry of paraffin-embedded human liver cancer using Rabbit pAb (ABIN6133588, ABIN6137055, ABIN6137056 and ABIN6224634) at dilution of 1:150 (40x lens). Perform high pressure antigen retrieval with 10 mM citrate buffer pH 6.0 before commencing with IHC staining protocol.



Western Blotting

Image 2. Western blot analysis of extracts of various cell lines, using antibody (ABIN6133588, ABIN6137055, ABIN6137056 and ABIN6224634) at 1:1000 dilution. Secondary antibody: HRP Goat Anti-Rabbit IgG (H+L) (ABIN1684268 and ABIN3020597) at 1:10000 dilution. Lysates/proteins: 25 µg per lane. Blocking buffer: 3 % nonfat dry milk in TBST. Detection: ECL Basic Kit (RM00020). Exposure time: 180s.