



[Go to Product page](#)

Datasheet for ABIN613713
anti-LMW Kininogen antibody

1 Image

Overview

Quantity:	150 µg
Target:	LMW Kininogen (LMWK)
Reactivity:	Human
Host:	Rabbit
Clonality:	Polyclonal
Conjugate:	This LMW Kininogen antibody is un-conjugated
Application:	Enzyme Immunoassay (EIA), Radioimmunoassay (RIA)

Product Details

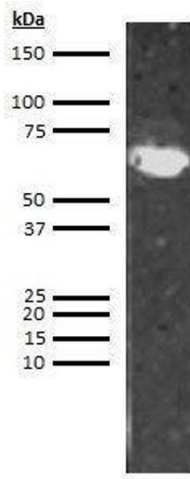
Isotype: IgG

Target Details

Target:	LMW Kininogen (LMWK)
Alternative Name:	Kininogen (LMW) (LMWK Products)

Application Details

Restrictions: For Research Use only



Western Blotting

Image 1.