

Datasheet for ABIN6137154  
**anti-ART5 antibody (AA 23-200)**



[Go to Product page](#)

2 Images

## Overview

Quantity:	100 µL
Target:	ART5
Binding Specificity:	AA 23-200
Reactivity:	Human
Host:	Rabbit
Clonality:	Polyclonal
Conjugate:	This ART5 antibody is un-conjugated
Application:	Western Blotting (WB)

## Product Details

Immunogen:	Recombinant fusion protein containing a sequence corresponding to amino acids 23-200 of human ART5 (NP_443750.2).
Sequence:	VPILPLGLAP DTFDDTYVGC AEEMEEKAAP LLKEEMAHHA LLRESWEAAQ ETWEDKRRGL TLPPGFKAQN GIAMVYTNS SNTLYWELNQ AVRTGGGSRE LYMRHFPFKA LHFYLIRALQ LLRGSGGCSR GPGEVFRGV GSLRFEPKRL GDSVRLGQFA SSSLDKAVAH RFGNATLF
Isotype:	IgG
Cross-Reactivity:	Human, Mouse, Rat
Characteristics:	Polyclonal Antibodies
Purification:	Affinity purification

## Target Details

---

Target:	ART5
Alternative Name:	ART5 ( <a href="#">ART5 Products</a> )
Background:	<p>The protein encoded by this gene belongs to the ARG-specific ADP-ribosyltransferase family. Proteins in this family regulate the function of target proteins by attaching ADP-ribose to specific amino acid residues in their target proteins. The mouse homolog lacks a glycosylphosphatidylinositol-anchor signal sequence and is predicted to be a secretory enzyme. Several transcripts encoding different isoforms have been found for this gene.,ART5,ARTC5,Epigenetics &amp; Nuclear Signaling,Cell Biology &amp; Developmental Biology,ART5</p>
Molecular Weight:	25 kDa/32 kDa
Gene ID:	116969
UniProt:	<a href="#">Q96L15</a>

## Application Details

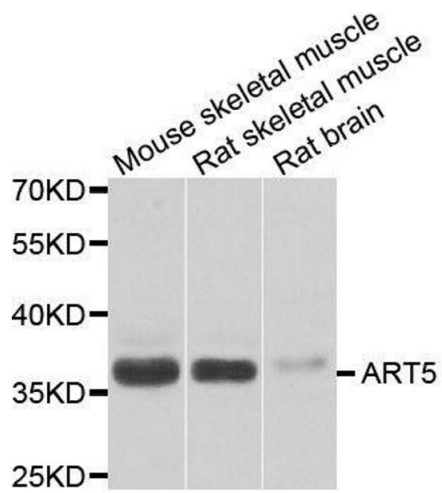
---

Application Notes:	WB,1:500 - 1:2000
Comment:	HIGH QUALITY
Restrictions:	For Research Use only

## Handling

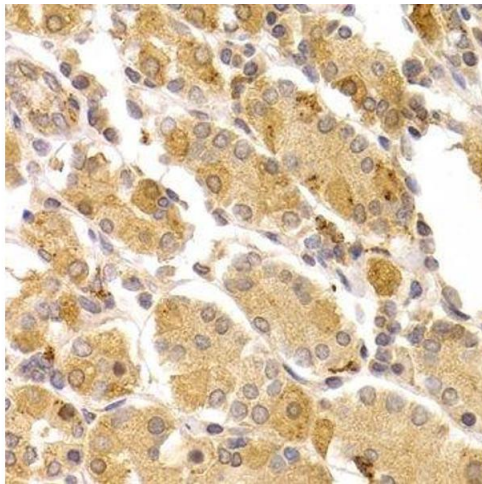
---

Format:	Liquid
Buffer:	PBS with 0.02 % sodium azide,50 % glycerol, pH 7.3.
Preservative:	Sodium azide
Precaution of Use:	This product contains Sodium azide: a POISONOUS AND HAZARDOUS SUBSTANCE which should be handled by trained staff only.
Storage:	-20 °C
Storage Comment:	Store at -20°C. Avoid freeze / thaw cycles.



### Western Blotting

**Image 1.** Western blot analysis of extracts of various cell lines, using ART5 antibody.



### Immunohistochemistry (Paraffin-embedded Sections)

**Image 2.** Immunohistochemistry of paraffin-embedded human stomach using ART5 antibody.