

Datasheet for ABIN6137228
anti-AFT1 antibody (AA 1-210)[Go to Product page](#)

2 Images

Overview

Quantity:	100 µL
Target:	AFT1
Binding Specificity:	AA 1-210
Reactivity:	Human
Host:	Rabbit
Clonality:	Polyclonal
Conjugate:	This AFT1 antibody is un-conjugated
Application:	Western Blotting (WB), Immunoprecipitation (IP)

Product Details

Immunogen:	Recombinant fusion protein containing a sequence corresponding to amino acids 1-210 of human ATF1 (NP_005162.1).
Sequence:	MEDSHKSTTS ETAPQPGSAV QGAHISHIAQ QVSSLSESEE SQDSSDSIGS SQKAHGILAR RPSYRKILKD LSEDTRGRK GDGENSGVSA AVTSM SVPTP IYQTSSGQYI AIAPNGALQL ASPGTDGVQG LQTLTMTNSG STQQGTTILQ YAQTS DGQI LVPSNQVVVQ TASGDMQTYQ IRTPSATSL PQTVM TSPV TLTSQTTKTD
Isotype:	IgG
Cross-Reactivity:	Human, Mouse
Characteristics:	Polyclonal Antibodies
Purification:	Affinity purification

Target Details

Target:	AFT1
Alternative Name:	ATF1 (AFT1 Products)
Background:	<p>This gene encodes an activating transcription factor, which belongs to the ATF subfamily and bZIP (basic-region leucine zipper) family. It influences cellular physiologic processes by regulating the expression of downstream target genes, which are related to growth, survival, and other cellular activities. This protein is phosphorylated at serine 63 in its kinase-inducible domain by serine/threonine kinases, cAMP-dependent protein kinase A, calmodulin-dependent protein kinase I/II, mitogen- and stress-activated protein kinase and cyclin-dependent kinase 3 (cdk-3). Its phosphorylation enhances its transactivation and transcriptional activities, and enhances cell transformation. Fusion of this gene and FUS on chromosome 16 or EWSR1 on chromosome 22 induced by translocation generates chimeric proteins in angiomatoid fibrous histiocytoma and clear cell sarcoma. This gene has a pseudogene on chromosome 6.,ATF1,EWS-ATF1,FUS/ATF-1,TREB36,Epigenetics & Nuclear Signaling,Transcription Factors,Signal Transduction,MAPK-Erk Signaling Pathway,MAPK-P38 Signaling Pathway,Neuroscience,Neurodegenerative Diseases,Dopamine Signaling in Parkinson's Disease,ATF1</p>
Molecular Weight:	15 kDa/29 kDa
Gene ID:	466
UniProt:	P18846
Pathways:	Neurotrophin Signaling Pathway , Activation of Innate immune Response , Myometrial Relaxation and Contraction , Toll-Like Receptors Cascades

Application Details

Application Notes:	WB,1:500 - 1:2000,IP,1:50 - 1:200
Comment:	HIGH QUALITY
Restrictions:	For Research Use only

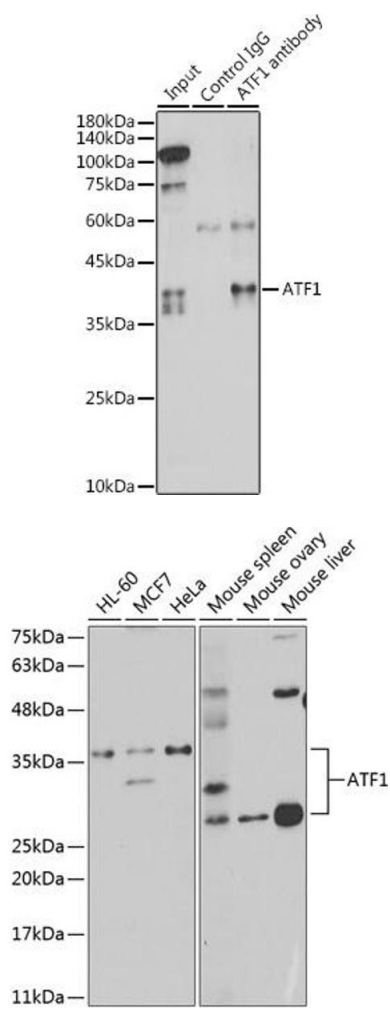
Handling

Format:	Liquid
Buffer:	PBS with 0.02 % sodium azide,50 % glycerol, pH 7.3.
Preservative:	Sodium azide

Handling

Precaution of Use:	This product contains Sodium azide: a POISONOUS AND HAZARDOUS SUBSTANCE which should be handled by trained staff only.
Storage:	-20 °C
Storage Comment:	Store at -20°C. Avoid freeze / thaw cycles.

Images



Immunoprecipitation

Image 1. Immunoprecipitation analysis of 300 µg extracts of HeLa cells using 3 µg antibody (ABIN6127376, ABIN6137228, ABIN6137229 and ABIN6221472). Western blot was performed from the immunoprecipitate using antibody (ABIN6127376, ABIN6137228, ABIN6137229 and ABIN6221472) at a dilution of 1:1000.

Western Blotting

Image 2. Western blot analysis of extracts of various cell lines, using antibody (ABIN6127376, ABIN6137228, ABIN6137229 and ABIN6221472) at 1:1000 dilution. Secondary antibody: HRP Goat Anti-Rabbit IgG (H+L) (ABIN1684268 and ABIN3020597) at 1:10000 dilution. Lysates/proteins: 25 µg per lane. Blocking buffer: 3 % nonfat dry milk in TBST.