

Datasheet for ABIN6137260
anti-ATG4C antibody (AA 1-200)

1 Image



[Go to Product page](#)

Overview

Quantity:	100 µL
Target:	ATG4C
Binding Specificity:	AA 1-200
Reactivity:	Human
Host:	Rabbit
Clonality:	Polyclonal
Conjugate:	This ATG4C antibody is un-conjugated
Application:	Western Blotting (WB)

Product Details

Immunogen:	Recombinant fusion protein containing a sequence corresponding to amino acids 1-200 of human ATG4C (NP_116241.2).
Sequence:	MEATGTDEVD KLKTKFISAW NNMKYSWVLK TKTYFSRNSP VLLLGKCYHF KYEDEDKTLP AESGCTIEDH VIAGNVEEFR KDFISRIWLT YREEFPQIEG SALTDDCGWG CTLRTGQMLL AQGLILHFLG RAWTWPDALN IENSSESWE SHTVKKFTAS FEASLSGERE FKPTPTISLKE TIGKYSDDHE MRNEVYHRKI
Isotype:	IgG
Cross-Reactivity:	Human
Characteristics:	Polyclonal Antibodies
Purification:	Affinity purification

Target Details

Target:	ATG4C
Alternative Name:	ATG4C (ATG4C Products)
Background:	<p>Autophagy is the process by which endogenous proteins and damaged organelles are destroyed intracellularly. Autophagy is postulated to be essential for cell homeostasis and cell remodeling during differentiation, metamorphosis, non-apoptotic cell death, and aging. Reduced levels of autophagy have been described in some malignant tumors, and a role for autophagy in controlling the unregulated cell growth linked to cancer has been proposed. This gene encodes a member of the autophagin protein family. The encoded protein is also designated as a member of the C-54 family of cysteine proteases. Alternate transcriptional splice variants, encoding the same protein, have been characterized.,ATG4C,APG4-C,APG4C,AUTL1,AUTL3,Cancer,Signal Transduction,Cell Biology & Developmental Biology,Autophagy,Ubiquitin,Endocrine & Metabolism,Mitochondrial metabolism,Cardiovascular,Heart,ATGs,ATG4C</p>
Molecular Weight:	52 kDa
Gene ID:	84938
UniProt:	Q96DT6
Pathways:	Autophagy

Application Details

Application Notes:	WB,1:500 - 1:2000
Comment:	HIGH QUALITY
Restrictions:	For Research Use only

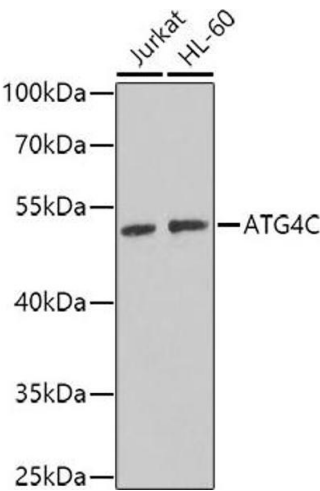
Handling

Format:	Liquid
Buffer:	PBS with 0.02 % sodium azide,50 % glycerol, pH 7.3.
Preservative:	Sodium azide
Precaution of Use:	This product contains Sodium azide: a POISONOUS AND HAZARDOUS SUBSTANCE which should be handled by trained staff only.
Storage:	-20 °C

Handling

Storage Comment: Store at -20°C. Avoid freeze / thaw cycles.

Images



Western Blotting

Image 1. Western blot analysis of extracts of various cell lines, using C antibody (ABIN6131191, ABIN6137260, ABIN6137261 and ABIN6223264) at 1:1000 dilution. Secondary antibody: HRP Goat Anti-Rabbit IgG (H+L) (ABIN1684268 and ABIN3020597) at 1:10000 dilution. Lysates/proteins: 25 µg per lane. Blocking buffer: 3 % nonfat dry milk in TBST. Detection: ECL Basic Kit (RM00020). Exposure time: 90s.