



Datasheet for ABIN6137289
anti-ATOX1 antibody (AA 1-68)



[Go to Product page](#)

1 Image

Overview

| | |
|----------------------|--------------------------------------|
| Quantity: | 100 µL |
| Target: | ATOX1 |
| Binding Specificity: | AA 1-68 |
| Reactivity: | Human |
| Host: | Rabbit |
| Clonality: | Polyclonal |
| Conjugate: | This ATOX1 antibody is un-conjugated |
| Application: | Western Blotting (WB) |

Product Details

| | |
|-------------------|--|
| Immunogen: | Recombinant fusion protein containing a sequence corresponding to amino acids 1-68 of human ATOX1 (NP_004036.1). |
| Sequence: | MPKHEFSVDM TCGGCAEAVS RVLNKLGGVK YDIDLPNKKV CIESEHSMDT LLATLKKTGK TVSYLGLE |
| Isotype: | IgG |
| Cross-Reactivity: | Human |
| Characteristics: | Polyclonal Antibodies |
| Purification: | Affinity purification |

Target Details

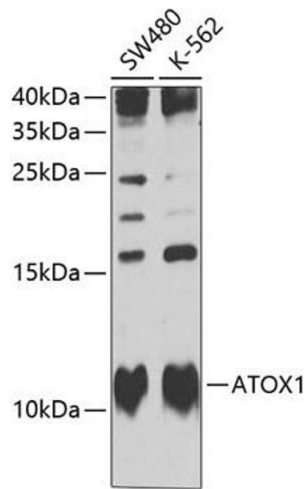
| | |
|-------------------|--|
| Target: | ATOX1 |
| Alternative Name: | ATOX1 (ATOX1 Products) |
| Background: | This gene encodes a copper chaperone that plays a role in copper homeostasis by binding and transporting cytosolic copper to ATPase proteins in the trans-Golgi network for later incorporation to the ceruloplasmin. This protein also functions as an antioxidant against superoxide and hydrogen peroxide, and therefore, may play a significant role in cancer carcinogenesis. Because of its cytogenetic location, this gene represents a candidate gene for 5q-syndrome.,ATOX1,ATX1,HAH1,Signal Transduction,Cell Biology & Developmental Biology,Endocrine & Metabolism,ATOX1 |
| Molecular Weight: | 7 kDa |
| Gene ID: | 475 |
| UniProt: | O00244 |
| Pathways: | Transition Metal Ion Homeostasis |

Application Details

| | |
|--------------------|-----------------------|
| Application Notes: | WB,1:500 - 1:2000 |
| Comment: | HIGH QUALITY |
| Restrictions: | For Research Use only |

Handling

| | |
|--------------------|--|
| Format: | Liquid |
| Buffer: | PBS with 0.02 % sodium azide,50 % glycerol, pH 7.3. |
| Preservative: | Sodium azide |
| Precaution of Use: | This product contains Sodium azide: a POISONOUS AND HAZARDOUS SUBSTANCE which should be handled by trained staff only. |
| Storage: | -20 °C |
| Storage Comment: | Store at -20°C. Avoid freeze / thaw cycles. |



Western Blotting

Image 1. Western blot analysis of extracts of various cell lines, using Antibody at 1:1000 dilution. Secondary antibody: HRP Goat Anti-Rabbit IgG (H+L) (ABIN1684268 and ABIN3020597) at 1:10000 dilution. Lysates/proteins: 25 µg per lane. Blocking buffer: 3% nonfat dry milk in TBST. Detection: ECL Basic Kit (RM00020). Exposure time: 15s.