



[Go to Product page](#)

Datasheet for ABIN6137296  
**anti-ATP13A2 antibody (AA 67-210)**

1 Image

Overview

Quantity:	100 µL
Target:	ATP13A2
Binding Specificity:	AA 67-210
Reactivity:	Human
Host:	Rabbit
Clonality:	Polyclonal
Conjugate:	This ATP13A2 antibody is un-conjugated
Application:	Western Blotting (WB)

Product Details

Immunogen:	Recombinant fusion protein containing a sequence corresponding to amino acids 67-210 of human ATP13A2 (NP_001135446.1).
Sequence:	WKPLWGVRLR LRPCNLAHAE TLVIEIRDKE DSSWQLFTVQ VQTEAIGEGS LEPSPQSQAE DGRSQA AVGA VPEGAWKDTA QLHKSEEAKR VLRYYLFQGG RYIWIETQQA FYQVSLLDHG RSCDDVHRSR HGLSLQDQMV RKAI
Isotype:	IgG
Cross-Reactivity:	Human, Mouse, Rat
Characteristics:	Polyclonal Antibodies
Purification:	Affinity purification

## Target Details

---

Target:	ATP13A2
Alternative Name:	ATP13A2 ( <a href="#">ATP13A2 Products</a> )
Background:	<p>This gene encodes a member of the P5 subfamily of ATPases which transports inorganic cations as well as other substrates. Mutations in this gene are associated with Kufor-Rakeb syndrome (KRS), also referred to as Parkinson disease 9. Multiple transcript variants encoding different isoforms have been found for this gene.,ATP13A2,CLN12,HSA9947,KRPPD,PARK9,SPG78,Cancer,Signal Transduction,Endocrine &amp; Metabolism,Neuroscience,Neurodegenerative Diseases,Dopamine Signaling in Parkinson's Disease,ATP13A2</p>
Molecular Weight:	125 kDa/128 kDa
Gene ID:	23400
UniProt:	<a href="#">Q9NQ11</a>
Pathways:	<a href="#">Ribonucleoside Biosynthetic Process</a>

## Application Details

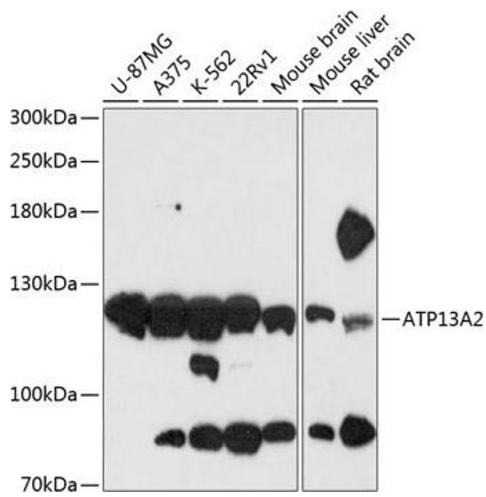
---

Application Notes:	WB,1:500 - 1:2000
Restrictions:	For Research Use only

## Handling

---

Format:	Liquid
Buffer:	PBS with 0.02 % sodium azide,50 % glycerol, pH 7.3.
Preservative:	Sodium azide
Precaution of Use:	This product contains Sodium azide: a POISONOUS AND HAZARDOUS SUBSTANCE which should be handled by trained staff only.
Storage:	-20 °C
Storage Comment:	Store at -20°C. Avoid freeze / thaw cycles.



### Western Blotting

**Image 1.** Western blot analysis of extracts of various cell lines, using antibody (ABIN6127385, ABIN6137296, ABIN6137297 and ABIN6216941) at 1:3000 dilution. Secondary antibody: HRP Goat Anti-Rabbit IgG (H+L) (ABIN1684268 and ABIN3020597) at 1:10000 dilution. Lysates/proteins: 25 µg per lane. Blocking buffer: 3 % nonfat dry milk in TBST. Detection: ECL Basic Kit (RM00020). Exposure time: 30s.