

Datasheet for ABIN6137302  
**anti-ATP1A2 antibody (AA 1-70)**[Go to Product page](#)

## 1 Image

## Overview

Quantity:	100 µL
Target:	ATP1A2
Binding Specificity:	AA 1-70
Reactivity:	Human
Host:	Rabbit
Clonality:	Polyclonal
Conjugate:	This ATP1A2 antibody is un-conjugated
Application:	Western Blotting (WB)

## Product Details

Immunogen:	Recombinant fusion protein containing a sequence corresponding to amino acids 1-70 of human ATP1A2 (NP_000693.1).
Sequence:	MGRGAGREYS PAATTAENG GKKKQKEKEL DELKKEVAMD DHKLSLDELG RKYQVDLSKG LTNQRAQDVL
Isotype:	IgG
Cross-Reactivity:	Human, Mouse, Rat
Characteristics:	Polyclonal Antibodies
Purification:	Affinity purification

## Target Details

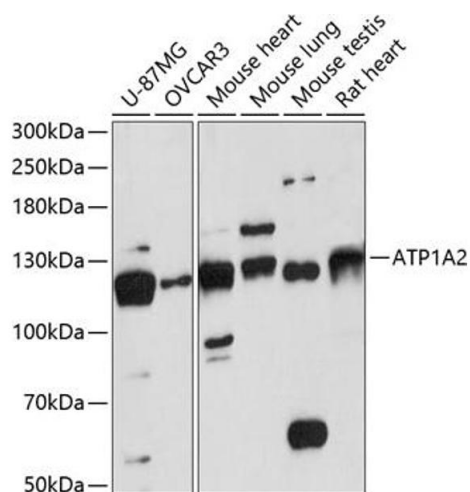
Target:	ATP1A2
Alternative Name:	ATP1A2 ( <a href="#">ATP1A2 Products</a> )
Background:	<p>The protein encoded by this gene belongs to the family of P-type cation transport ATPases, and to the subfamily of Na<sup>+</sup>/K<sup>+</sup> -ATPases. Na<sup>+</sup>/K<sup>+</sup> -ATPase is an integral membrane protein responsible for establishing and maintaining the electrochemical gradients of Na and K ions across the plasma membrane. These gradients are essential for osmoregulation, for sodium-coupled transport of a variety of organic and inorganic molecules, and for electrical excitability of nerve and muscle. This enzyme is composed of two subunits, a large catalytic subunit (alpha) and a smaller glycoprotein subunit (beta). The catalytic subunit of Na<sup>+</sup>/K<sup>+</sup> -ATPase is encoded by multiple genes. This gene encodes an alpha 2 subunit. Mutations in this gene result in familial basilar or hemiplegic migraines, and in a rare syndrome known as alternating hemiplegia of childhood.,ATP1A2,FHM2,MHP2,Cancer,Signal Transduction,Endocrine &amp; Metabolism,ATP1A2</p>
Molecular Weight:	112 kDa
Gene ID:	477
UniProt:	<a href="#">P50993</a>
Pathways:	<a href="#">Thyroid Hormone Synthesis</a> , <a href="#">Proton Transport</a> , <a href="#">Ribonucleoside Biosynthetic Process</a>

## Application Details

Application Notes:	WB,1:500 - 1:2000
Restrictions:	For Research Use only

## Handling

Format:	Liquid
Buffer:	PBS with 0.02 % sodium azide,50 % glycerol, pH 7.3.
Preservative:	Sodium azide
Precaution of Use:	This product contains Sodium azide: a POISONOUS AND HAZARDOUS SUBSTANCE which should be handled by trained staff only.
Storage:	-20 °C
Storage Comment:	Store at -20°C. Avoid freeze / thaw cycles.



Western Blotting

**Image 1.** Western blot analysis of extracts of various cell lines, using antibody (ABIN6129199, ABIN6137302, ABIN6137303 and ABIN6217930) at 1:3000 dilution. Secondary antibody: HRP Goat Anti-Rabbit IgG (H+L) (ABIN1684268 and ABIN3020597) at 1:10000 dilution. Lysates/proteins: 25 µg per lane. Blocking buffer: 3 % nonfat dry milk in TBST. Detection: ECL Basic Kit (RM00020). Exposure time: 90s.