



[Go to Product page](#)

Datasheet for ABIN6137320

anti-ATP2B4 antibody (AA 1141-1205)

1 Image

Overview

Quantity:	100 µL
Target:	ATP2B4
Binding Specificity:	AA 1141-1205
Reactivity:	Human
Host:	Rabbit
Clonality:	Polyclonal
Conjugate:	This ATP2B4 antibody is un-conjugated
Application:	Western Blotting (WB)

Product Details

Immunogen:	Recombinant fusion protein containing a sequence corresponding to amino acids 1141-1205 of human ATP2B4 (NP_001675.3).
Sequence:	ELPRTPLLDE EEEENPDKAS KFGTRVLLLD GEVTPYANTN NNAVDCNQVQ LPQSDSSLQS LETSV
Isotype:	IgG
Cross-Reactivity:	Mouse
Characteristics:	Polyclonal Antibodies
Purification:	Affinity purification

Target Details

Target:	ATP2B4
---------	--------

Target Details

Alternative Name: [ATP2B4 \(ATP2B4 Products\)](#)

Background: The protein encoded by this gene belongs to the family of P-type primary ion transport ATPases characterized by the formation of an aspartyl phosphate intermediate during the reaction cycle. These enzymes remove bivalent calcium ions from eukaryotic cells against very large concentration gradients and play a critical role in intracellular calcium homeostasis. The mammalian plasma membrane calcium ATPase isoforms are encoded by at least four separate genes and the diversity of these enzymes is further increased by alternative splicing of transcripts. The expression of different isoforms and splice variants is regulated in a developmental, tissue- and cell type-specific manner, suggesting that these pumps are functionally adapted to the physiological needs of particular cells and tissues. This gene encodes the plasma membrane calcium ATPase isoform 4. Alternatively spliced transcript variants encoding different isoforms have been identified. [ATP2B4,ATP2B2,MXRA1,PMCA4,PMCA4b,PMCA4x,Cancer,Signal Transduction,Endocrine & Metabolism,Neuroscience,Calcium Signaling,ATP2B4](#)

Molecular Weight: 124-137 kDa

Gene ID: 493

UniProt: [P23634](#)

Pathways: [Ribonucleoside Biosynthetic Process](#)

Application Details

Application Notes: WB,1:1000 - 1:4000

Restrictions: For Research Use only

Handling

Format: Liquid

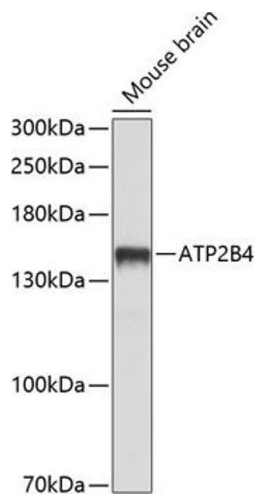
Buffer: PBS with 0.02 % sodium azide,50 % glycerol, pH 7.3.

Preservative: Sodium azide

Precaution of Use: This product contains Sodium azide: a POISONOUS AND HAZARDOUS SUBSTANCE which should be handled by trained staff only.

Storage: -20 °C

Storage Comment: Store at -20°C. Avoid freeze / thaw cycles.



Western Blotting

Image 1. Western blot analysis of extracts of mouse brain, using B4 antibody (ABIN6127393, ABIN6137320, ABIN6137321 and ABIN6214232) at 1:1000 dilution. Secondary antibody: HRP Goat Anti-Rabbit IgG (H+L) (ABIN1684268 and ABIN3020597) at 1:10000 dilution. Lysates/proteins: 25 µg per lane. Blocking buffer: 3 % nonfat dry milk in TBST. Detection: ECL Basic Kit (RM00020). Exposure time: 5s.