



[Go to Product page](#)

Datasheet for ABIN6137322
anti-ATP4b antibody (AA 62-291)

1 Image

Overview

| | |
|----------------------|--------------------------------------|
| Quantity: | 100 µL |
| Target: | ATP4b |
| Binding Specificity: | AA 62-291 |
| Reactivity: | Human |
| Host: | Rabbit |
| Clonality: | Polyclonal |
| Conjugate: | This ATP4b antibody is un-conjugated |
| Application: | Western Blotting (WB) |

Product Details

| | |
|-------------------|---|
| Immunogen: | Recombinant fusion protein containing a sequence corresponding to amino acids 62-291 of human ATP4B (NP_000696.1). |
| Sequence: | LMQTVDPYTP DYQDQLRSPG VTLRPDVYGE KGLEIVYNVS DNRTWADLTQ TLHAFLAGYS PAAQEDSINC TSEQYFFQES FRAPNHTKFS CKFTADMLQN CSGADPNFG FEEGKPCFII KMNRIKFLP SNGSAPRVDC AFLDQPRELG QPLQVKYYPY NGTFSLHYFP YYGKKAQPHY SNPLVAAKLL NIPRNAEVAI VCKVMAEHVT FNNPHDPYEG KVEFKLKIEK |
| Isotype: | IgG |
| Cross-Reactivity: | Human, Mouse, Rat |
| Characteristics: | Polyclonal Antibodies |
| Purification: | Affinity purification |

Target Details

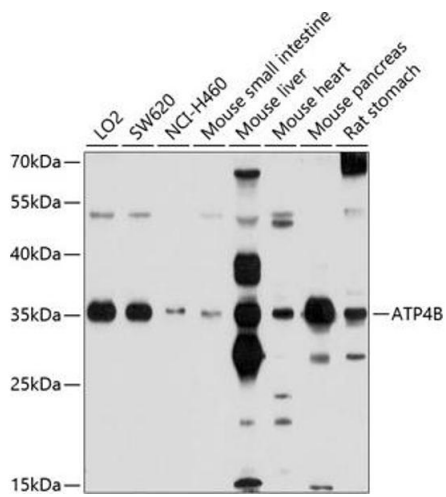
| | |
|-------------------|---|
| Target: | ATP4b |
| Alternative Name: | ATP4B (ATP4b Products) |
| Background: | <p>The protein encoded by this gene belongs to a family of P-type cation-transporting ATPases. The gastric H⁺, K⁺-ATPase is a heterodimer consisting of a high molecular weight catalytic alpha subunit and a smaller but heavily glycosylated beta subunit. This enzyme is a proton pump that catalyzes the hydrolysis of ATP coupled with the exchange of H⁽⁺⁾ and K⁽⁺⁾ ions across the plasma membrane. It is also responsible for gastric acid secretion. This gene encodes the beta subunit of the gastric H⁺, K⁺-ATPase.,ATP4B,ATP6B,Signal Transduction,Endocrine & Metabolism,ATP4B</p> |
| Molecular Weight: | 33 kDa |
| Gene ID: | 496 |
| UniProt: | P51164 |
| Pathways: | Proton Transport |

Application Details

| | |
|--------------------|-----------------------|
| Application Notes: | WB,1:500 - 1:2000 |
| Comment: | HIGH QUALITY |
| Restrictions: | For Research Use only |

Handling

| | |
|--------------------|--|
| Format: | Liquid |
| Buffer: | PBS with 0.02 % sodium azide,50 % glycerol, pH 7.3. |
| Preservative: | Sodium azide |
| Precaution of Use: | This product contains Sodium azide: a POISONOUS AND HAZARDOUS SUBSTANCE which should be handled by trained staff only. |
| Storage: | -20 °C |
| Storage Comment: | Store at -20°C. Avoid freeze / thaw cycles. |



Western Blotting

Image 1. Western blot analysis of extracts of various cell lines, using B antibody (ABIN6130981, ABIN6137322, ABIN6137323 and ABIN6214233) at 1:1000 dilution. Secondary antibody: HRP Goat Anti-Rabbit IgG (H+L) (ABIN1684268 and ABIN3020597) at 1:10000 dilution. Lysates/proteins: 25 µg per lane. Blocking buffer: 3 % nonfat dry milk in TBST. Detection: ECL Basic Kit (RM00020). Exposure time: 30s.