



[Go to Product page](#)

Datasheet for ABIN6137377
anti-AVPR1A antibody (AA 349-418)

3 Images

Overview

Quantity:	100 µL
Target:	AVPR1A
Binding Specificity:	AA 349-418
Reactivity:	Human
Host:	Rabbit
Clonality:	Polyclonal
Conjugate:	This AVPR1A antibody is un-conjugated
Application:	Western Blotting (WB), Immunofluorescence (IF)

Product Details

Immunogen:	Recombinant fusion protein containing a sequence corresponding to amino acids 349-418 of human AVPR1A (NP_000697.1).
Sequence:	MFFSGHLLQD CVQSFPCQ N MKEKFNKEDT DSMSRRQTFY SNNRSPTNST GMWKDSPKSS KSIKFIPVST
Isotype:	IgG
Cross-Reactivity:	Human, Mouse, Rat
Characteristics:	Polyclonal Antibodies
Purification:	Affinity purification

Target Details

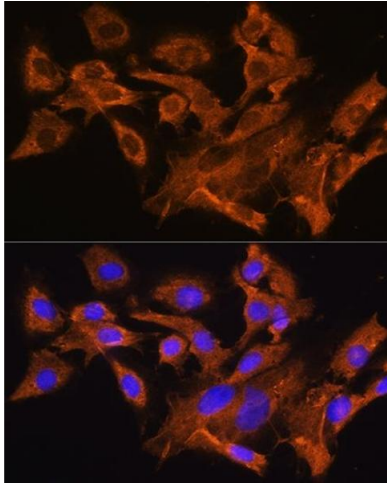
Target:	AVPR1A
Alternative Name:	AVPR1A (AVPR1A Products)
Background:	<p>The protein encoded by this gene acts as receptor for arginine vasopressin. This receptor belongs to the subfamily of G-protein coupled receptors which includes AVPR1B, V2R and OXT receptors. Its activity is mediated by G proteins which stimulate a phosphatidylinositol-calcium second messenger system. The receptor mediates cell contraction and proliferation, platelet aggregation, release of coagulation factor and glycogenolysis.,AVPR1A,AVPR V1a,AVPR1,V1aR,AVPRV1a,Signal Transduction,G protein signaling,G-Protein-Coupled Receptors(GPCR),Neuroscience,AVPR1A</p>
Molecular Weight:	46 kDa
Gene ID:	552
UniProt:	P37288
Pathways:	Regulation of Systemic Arterial Blood Pressure by Hormones , Response to Water Deprivation , Regulation of Carbohydrate Metabolic Process

Application Details

Application Notes:	WB,1:500 - 1:2000,IF,1:50 - 1:200
Comment:	HIGH QUALITY
Restrictions:	For Research Use only

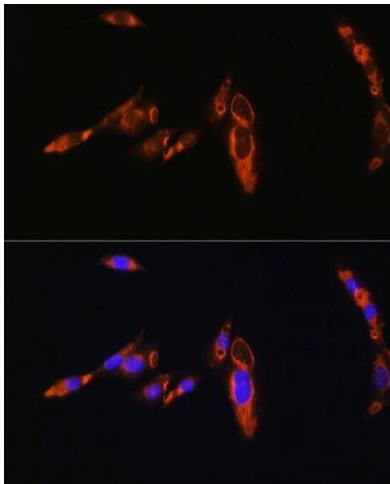
Handling

Format:	Liquid
Buffer:	PBS with 0.02 % sodium azide,50 % glycerol, pH 7.3.
Preservative:	Sodium azide
Precaution of Use:	This product contains Sodium azide: a POISONOUS AND HAZARDOUS SUBSTANCE which should be handled by trained staff only.
Storage:	-20 °C
Storage Comment:	Store at -20°C. Avoid freeze / thaw cycles.



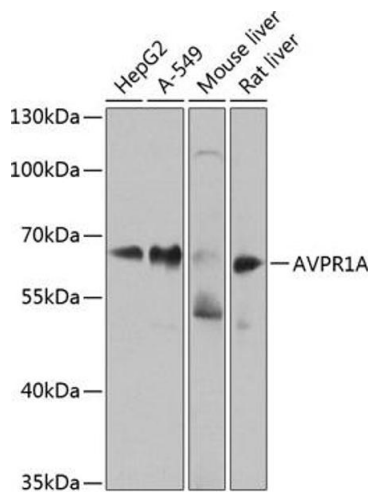
Immunofluorescence

Image 1. Immunofluorescence analysis of C6 cells using A Rabbit pAb (ABIN6129944, ABIN6137377, ABIN6137378 and ABIN6224448) at dilution of 1:100. Blue: DAPI for nuclear staining.



Immunofluorescence

Image 2. Immunofluorescence analysis of NIH/3T3 cells using A Rabbit pAb (ABIN6129944, ABIN6137377, ABIN6137378 and ABIN6224448) at dilution of 1:100. Blue: DAPI for nuclear staining.



Western Blotting

Image 3. Western blot analysis of extracts of various cell lines, using A antibody (ABIN6129944, ABIN6137377, ABIN6137378 and ABIN6224448) at 1:1000 dilution. Secondary antibody: HRP Goat Anti-Rabbit IgG (H+L) (ABIN1684268 and ABIN3020597) at 1:10000 dilution. Lysates/proteins: 25 µg per lane. Blocking buffer: 3 % nonfat dry milk in TBST. Detection: ECL Enhanced Kit (RM00021). Exposure time: 60s.