



[Go to Product page](#)

Datasheet for ABIN6137409  
**anti-B9D1 antibody (AA 1-130)**

6 Images

Overview

Quantity:	100 µL
Target:	B9D1
Binding Specificity:	AA 1-130
Reactivity:	Human
Host:	Rabbit
Clonality:	Polyclonal
Conjugate:	This B9D1 antibody is un-conjugated
Application:	Immunohistochemistry (IHC), Western Blotting (WB), Immunofluorescence (IF)

Product Details

Immunogen:	Recombinant fusion protein containing a sequence corresponding to amino acids 1-130 of human B9D1 (NP_056496.1).
Sequence:	MATASPSVFL LMVNGQVESA QFPEYDDLVC KYCFVYGQDW APTAGLEEGI SQITSKSQDV RQALVWNFPI DVTFKSTNPY GWPQIVLSVY GPDVFGNDVV RGYGAVHVPF SPGRHKRTIP MFVPESTSKL
Isotype:	IgG
Cross-Reactivity:	Human, Mouse, Rat
Characteristics:	Polyclonal Antibodies
Purification:	Affinity purification

## Target Details

---

Target:	B9D1
Alternative Name:	B9D1 ( <a href="#">B9D1 Products</a> )
Background:	This gene encodes a B9 domain-containing protein, one of several that are involved in ciliogenesis. Alterations in expression of this gene have been found in a family with Meckel syndrome. Meckel syndrome has been associated with at least six different genes. This gene is located within the Smith-Magenis syndrome region on chromosome 17.,B9D1,B9,EPPB9,JBTS27,MKS9,MKSR1,Cell Biology & Developmental Biology,Cell Cycle,Centrosome,B9D1
Molecular Weight:	16 kDa/22 kDa
Gene ID:	27077
UniProt:	<a href="#">Q9UPM9</a>

## Application Details

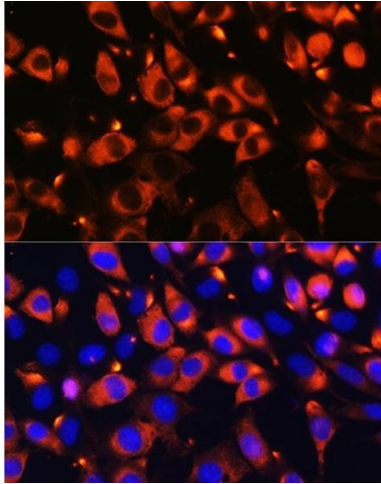
---

Application Notes:	WB,1:500 - 1:2000,IHC,1:50 - 1:200,IF,1:50 - 1:200
Comment:	HIGH QUALITY
Restrictions:	For Research Use only

## Handling

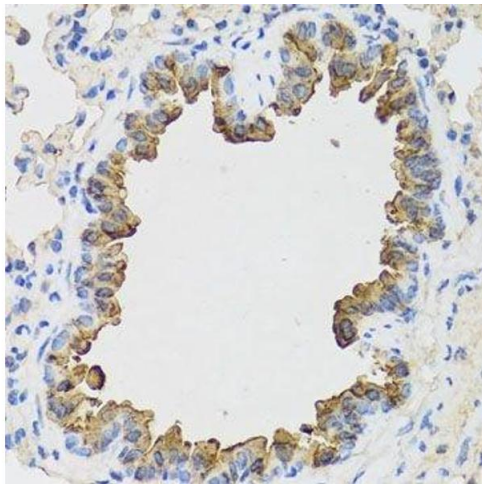
---

Format:	Liquid
Buffer:	PBS with 0.02 % sodium azide,50 % glycerol, pH 7.3.
Preservative:	Sodium azide
Precaution of Use:	This product contains Sodium azide: a POISONOUS AND HAZARDOUS SUBSTANCE which should be handled by trained staff only.
Storage:	-20 °C
Storage Comment:	Store at -20°C. Avoid freeze / thaw cycles.



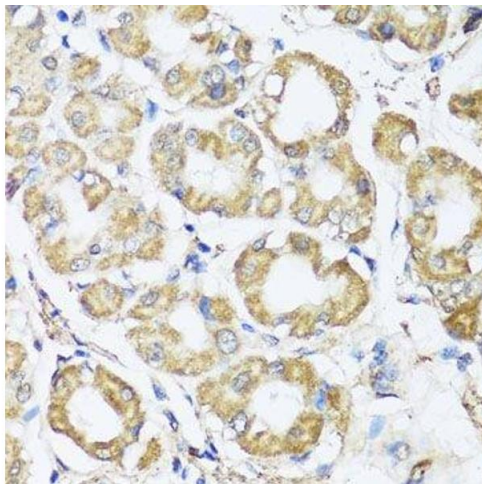
#### Immunofluorescence

**Image 1.** Immunofluorescence analysis of L929 cells using B9D1 Rabbit pAb (ABIN6133363, ABIN6137409, ABIN6137410 and ABIN6223982) at dilution of 1:100. Blue: DAPI for nuclear staining.



#### Immunohistochemistry (Paraffin-embedded Sections)

**Image 2.** Immunohistochemistry of paraffin-embedded mouse lung using B9D1 antibody.



#### Immunohistochemistry (Paraffin-embedded Sections)

**Image 3.** Immunohistochemistry of paraffin-embedded human stomach using B9D1 antibody.

Please check the [product details page](#) for more images. Overall 6 images are available for ABIN6137409.