

Datasheet for ABIN6137411
anti-BAAT antibody (AA 309-418)



[Go to Product page](#)

3 Images

Overview

Quantity:	100 µL
Target:	BAAT
Binding Specificity:	AA 309-418
Reactivity:	Human
Host:	Rabbit
Clonality:	Polyclonal
Conjugate:	This BAAT antibody is un-conjugated
Application:	Western Blotting (WB), Immunohistochemistry (IHC), Immunofluorescence (IF)

Product Details

Immunogen:	Recombinant fusion protein containing a sequence corresponding to amino acids 309-418 of human BAAT (NP_001692.1).
Sequence:	YLFPIEEAQG QFLFIVGEGD KTINSKAHAE QAIGQLKRHG KNNWTLLSYP GAGHLIEPPY SPLCCASTTH DLRLHWGGEV IPHAAAQEHA WKEIQRFLRK HLIPDVTSQL
Isotype:	IgG
Cross-Reactivity:	Human, Mouse, Rat
Characteristics:	Polyclonal Antibodies
Purification:	Affinity purification

Target Details

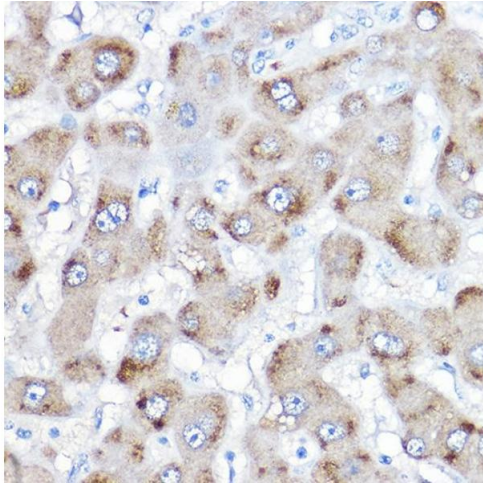
Target:	BAAT
Alternative Name:	BAAT (BAAT Products)
Background:	The protein encoded by this gene is a liver enzyme that catalyzes the transfer of C24 bile acids from the acyl-CoA thioester to either glycine or taurine, the second step in the formation of bile acid-amino acid conjugates. The bile acid conjugates then act as a detergent in the gastrointestinal tract, which enhances lipid and fat-soluble vitamin absorption. Defects in this gene are a cause of familial hypercholanemia (FHCA). Two transcript variants encoding the same protein have been found for this gene.,BAAT,BACAT,BAT,Cancer,Signal Transduction,Endocrine & Metabolism,Lipid Metabolism,BAAT
Molecular Weight:	46 kDa
Gene ID:	570
UniProt:	Q14032

Application Details

Application Notes:	WB,1:500 - 1:2000,IHC,1:50 - 1:200,IF,1:50 - 1:200
Comment:	HIGH QUALITY
Restrictions:	For Research Use only

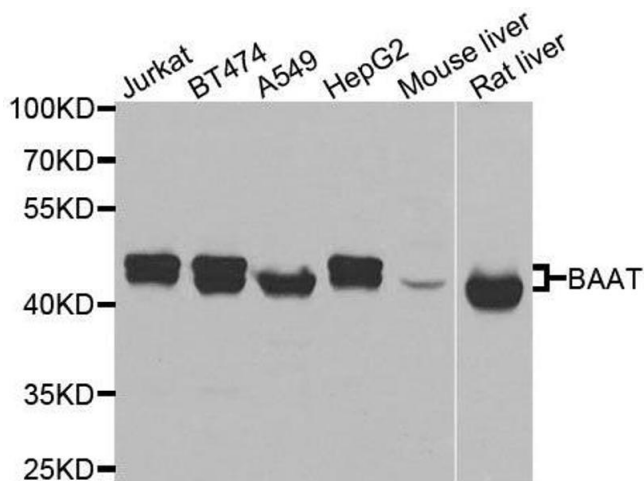
Handling

Format:	Liquid
Buffer:	PBS with 0.02 % sodium azide,50 % glycerol, pH 7.3.
Preservative:	Sodium azide
Precaution of Use:	This product contains Sodium azide: a POISONOUS AND HAZARDOUS SUBSTANCE which should be handled by trained staff only.
Storage:	-20 °C
Storage Comment:	Store at -20°C. Avoid freeze / thaw cycles.



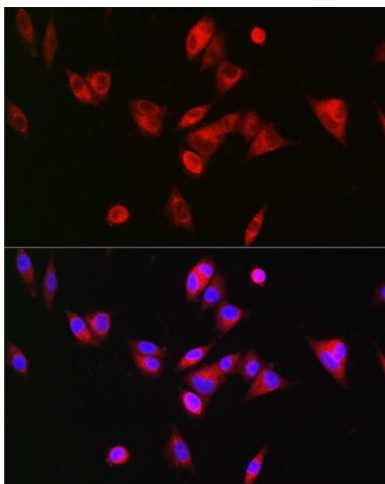
Immunohistochemistry

Image 1. Immunohistochemistry of paraffin-embedded human liver using BAAT Rabbit pAb (ABIN6131367, ABIN6137411, ABIN6137412 and ABIN6223563) at dilution of 1:500 (40x lens). Perform high pressure antigen retrieval with 10 mM citrate buffer pH 6.0 before commencing with IHC staining protocol.



Western Blotting

Image 2. Western blot analysis of extracts of various cell lines, using BAAT antibody.



Immunofluorescence

Image 3. Immunofluorescence analysis of Hep G2 cells using BAAT Rabbit pAb (ABIN6131367, ABIN6137411, ABIN6137412 and ABIN6223563) at dilution of 1:200 (40x lens). Blue: DAPI for nuclear staining.