



Datasheet for ABIN6137420
anti-SMARCD1 antibody (AA 1-120)



[Go to Product page](#)

4 Images

Overview

Quantity:	100 µL
Target:	SMARCD1
Binding Specificity:	AA 1-120
Reactivity:	Mouse
Host:	Rabbit
Clonality:	Polyclonal
Conjugate:	This SMARCD1 antibody is un-conjugated
Application:	Western Blotting (WB), Immunohistochemistry (IHC)

Product Details

Immunogen:	Recombinant fusion protein containing a sequence corresponding to amino acids 1-120 of mouse BAF60a (NP_114030.2).
Sequence:	MAARAGFQSV APSGGAGASG GAGVAAALGP GGTPGPPVPM GPAPGQGLYR SPMPGAAYPR PGMLPGSRMT PQGPSMGPPG YGGNPSVRPG LAQSGMDQSR KRPAPQIQQ VQQQAVQNRN
Isotype:	IgG
Cross-Reactivity:	Human, Mouse, Rat
Characteristics:	Polyclonal Antibodies
Purification:	Affinity purification

Target Details

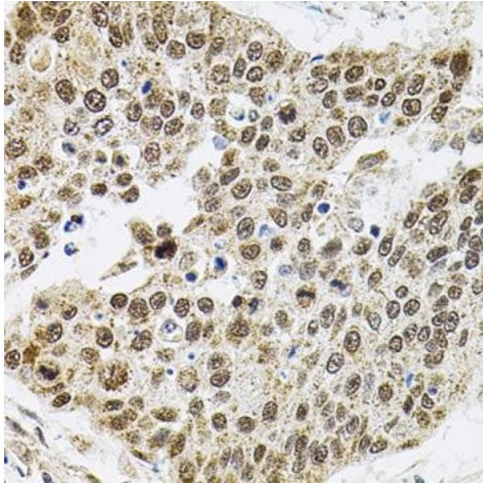
Target:	SMARCD1
Alternative Name:	SMARCD1 (SMARCD1 Products)
Background:	<p>The protein encoded by this gene is a member of the SWI/SNF family of proteins, whose members display helicase and ATPase activities and which are thought to regulate transcription of certain genes by altering the chromatin structure around those genes. The encoded protein is part of the large ATP-dependent chromatin remodeling complex SNF/SWI and contains a predicted leucine zipper motif typical of many transcription factors.,SMARCC1,BAF155,CRACC1,Rsc8,SRG3,SWI3,SWI/SNF complex subunit SMARCC1,BAF60a,SMARCD1,Epigenetics & Nuclear Signaling,Nuclear Receptor Signaling,Nuclear hormone receptors,Chromatin Remodeling,Signal Transduction,SMARCD1</p>
Molecular Weight:	58 kDa
Gene ID:	83797
UniProt:	Q96GM5

Application Details

Application Notes:	WB,1:500 - 1:2000,IHC,1:50 - 1:200
Comment:	HIGH QUALITY
Restrictions:	For Research Use only

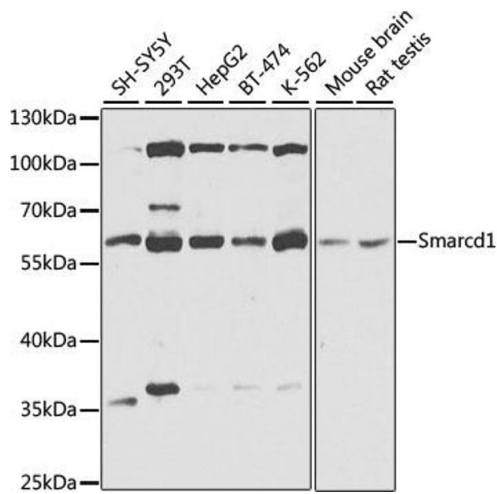
Handling

Format:	Liquid
Buffer:	PBS with 0.02 % sodium azide,50 % glycerol, pH 7.3.
Preservative:	Sodium azide
Precaution of Use:	This product contains Sodium azide: a POISONOUS AND HAZARDOUS SUBSTANCE which should be handled by trained staff only.
Storage:	-20 °C
Storage Comment:	Store at -20°C. Avoid freeze / thaw cycles.



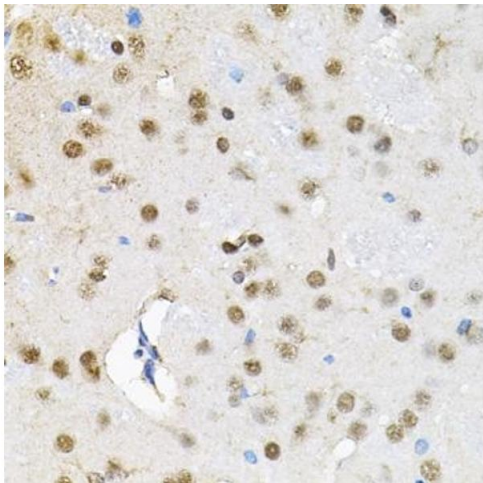
Immunohistochemistry

Image 1. Immunohistochemistry of paraffin-embedded human lung cancer using Smarcd1 antibody (ABIN6132669, ABIN6137420, ABIN6137421 and ABIN6225284) (40x lens). Perform microwave antigen retrieval with 10 mM PBS buffer pH 7.2 before commencing with IHC staining protocol.



Western Blotting

Image 2. Western blot analysis of extracts of various cell lines, using Smarcd1 antibody (ABIN6132669, ABIN6137420, ABIN6137421 and ABIN6225284) at 1:1000 dilution. Secondary antibody: HRP Goat Anti-Rabbit IgG (H+L) (ABIN1684268 and ABIN3020597) at 1:10000 dilution. Lysates/proteins: 25 µg per lane. Blocking buffer: 3 % nonfat dry milk in TBST. Detection: ECL Basic Kit (RM00020). Exposure time: 15s.



Immunohistochemistry

Image 3. Immunohistochemistry of paraffin-embedded rat brain using Smarcd1 antibody (ABIN6132669, ABIN6137420, ABIN6137421 and ABIN6225284) (40x lens). Perform microwave antigen retrieval with 10 mM PBS buffer pH 7.2 before commencing with IHC staining protocol.

Please check the [product details page](#) for more images. Overall 4 images are available for ABIN6137420.