

Datasheet for ABIN6137509
anti-BCL3 antibody (AA 300-400)[Go to Product page](#)

4 Images

Overview

Quantity:	100 µL
Target:	BCL3
Binding Specificity:	AA 300-400
Reactivity:	Human
Host:	Rabbit
Clonality:	Polyclonal
Conjugate:	This BCL3 antibody is un-conjugated
Application:	Western Blotting (WB), Immunofluorescence (IF)

Product Details

Immunogen:	A synthetic peptide corresponding to a sequence within amino acids 300-400 of human BCL3 (NP_005169.2).
Sequence:	ANVNAQMYSG SSALHSASGR GLLPLVRTLV RSGADSSLKN CHNDTPLMVA RSRRVIDILR GKATRPASTS QPDSPDRSA NTSPPESSRL SSNGLLSASP S
Isotype:	IgG
Cross-Reactivity:	Human, Mouse, Rat
Characteristics:	Polyclonal Antibodies
Purification:	Affinity purification

Target Details

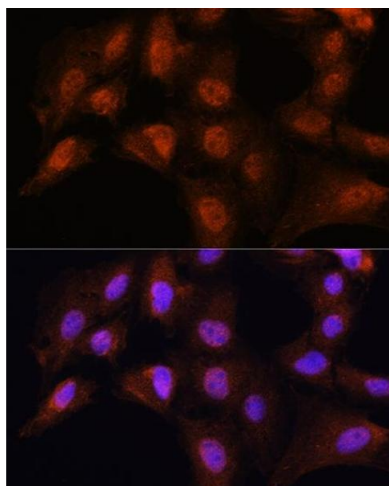
Target:	BCL3
Alternative Name:	BCL3 (BCL3 Products)
Background:	<p>This gene is a proto-oncogene candidate. It is identified by its translocation into the immunoglobulin alpha-locus in some cases of B-cell leukemia. The protein encoded by this gene contains seven ankyrin repeats, which are most closely related to those found in I kappa B proteins. This protein functions as a transcriptional co-activator that activates through its association with NF-kappa B homodimers. The expression of this gene can be induced by NF-kappa B, which forms a part of the autoregulatory loop that controls the nuclear residence of p50 NF-kappa B.</p> <p>BCL3,BCL4,D19S37,Epigenetics & Nuclear Signaling,Transcription Factors,Cancer,Cell Biology & Developmental Biology,Apoptosis,Immunology & Inflammation,NF-kB Signaling Pathway,BCL3</p>
Molecular Weight:	47 kDa
Gene ID:	602
UniProt:	P20749
Pathways:	NF-kappaB Signaling , Maintenance of Protein Location , Protein targeting to Nucleus

Application Details

Application Notes:	WB,1:500 - 1:2000,IF,1:50 - 1:200
Restrictions:	For Research Use only

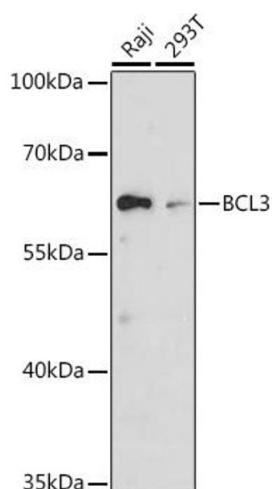
Handling

Format:	Liquid
Buffer:	PBS with 0.02 % sodium azide,50 % glycerol, pH 7.3.
Preservative:	Sodium azide
Precaution of Use:	This product contains Sodium azide: a POISONOUS AND HAZARDOUS SUBSTANCE which should be handled by trained staff only.
Storage:	-20 °C
Storage Comment:	Store at -20°C. Avoid freeze / thaw cycles.



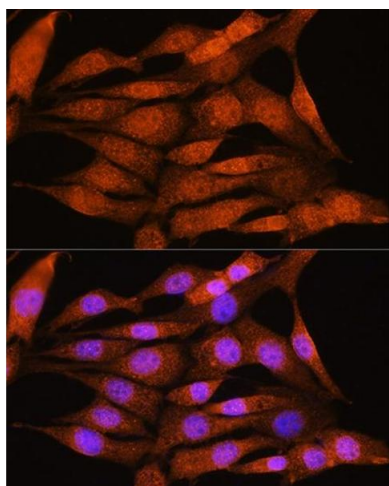
Immunofluorescence

Image 1. Immunofluorescence analysis of C6 cells using BCL3 Rabbit pAb (ABIN6134239, ABIN6137509, ABIN6137510 and ABIN7101379) at dilution of 1:100. Blue: DAPI for nuclear staining.



Western Blotting

Image 2. Western blot analysis of extracts of various cell lines, using BCL3 antibody (ABIN6134239, ABIN6137509, ABIN6137510 and ABIN7101379) at 1:1000 dilution. Secondary antibody: HRP Goat Anti-Rabbit IgG (H+L) (ABIN1684268 and ABIN3020597) at 1:10000 dilution. Lysates/proteins: 25 µg per lane. Blocking buffer: 3 % nonfat dry milk in TBST. Detection: ECL Basic Kit (RM00020). Exposure time: 30s.



Immunofluorescence

Image 3. Immunofluorescence analysis of NIH/3T3 cells using BCL3 Rabbit pAb (ABIN6134239, ABIN6137509, ABIN6137510 and ABIN7101379) at dilution of 1:100. Blue: DAPI for nuclear staining.

Please check the [product details page](#) for more images. Overall 4 images are available for ABIN6137509.