



[Go to Product page](#)

Datasheet for ABIN6137520
anti-BCS1L antibody (AA 33-240)

4 Images

Overview

Quantity:	100 µL
Target:	BCS1L
Binding Specificity:	AA 33-240
Reactivity:	Human
Host:	Rabbit
Clonality:	Polyclonal
Conjugate:	This BCS1L antibody is un-conjugated
Application:	Western Blotting (WB), Immunohistochemistry (IHC), Immunofluorescence (IF)

Product Details

Immunogen:	Recombinant fusion protein containing a sequence corresponding to amino acids 33-240 of human BCS1L (NP_004319.1).
Sequence:	RKGVQLGLVA FRRHYMITLE VPARDRSYAW LLSWLTRHST RTQHLSVETS YLQHESGRIS TKFEFVPSPG NHFIWYRGKW IRVERSREMQ MIDLQTGTPW ESVTFTALGT DRKVFFNILE EARELALQQE EGKTVMYTAV GSEWRPFGYP RRRRPLNSVV LQQLADRIV RDVQEFIDNP KWYTDRGIPY RRGYLLYGPP GCGKSSFI
Isotype:	IgG
Cross-Reactivity:	Human, Mouse, Rat
Characteristics:	Polyclonal Antibodies
Purification:	Affinity purification

Target Details

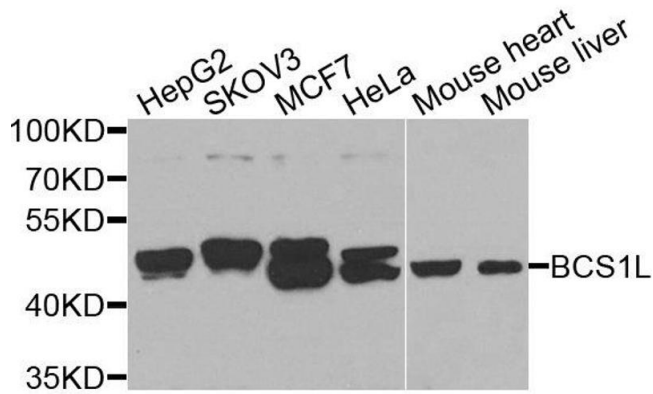
Target:	BCS1L
Alternative Name:	BCS1L (BCS1L Products)
Background:	<p>This gene encodes a homolog of the <i>S. cerevisiae</i> bcs1 protein which is involved in the assembly of complex III of the mitochondrial respiratory chain. The encoded protein does not contain a mitochondrial targeting sequence but experimental studies confirm that it is imported into mitochondria. Mutations in this gene are associated with mitochondrial complex III deficiency and the GRACILE syndrome. Several alternatively spliced transcripts encoding two different isoforms have been described.,BCS1L,BCS,BCS1,BJS,FLNMS,GRACILE,Hs.6719,MC3DN1,PTD,h-BCS,h-BCS1,Cancer,Signal Transduction,Endocrine & Metabolism,Mitochondrial metabolism,Mitochondrial markers,Neuroscience,BCS1L</p>
Molecular Weight:	47 kDa
Gene ID:	617
UniProt:	Q9Y276
Pathways:	SARS-CoV-2 Protein Interactome

Application Details

Application Notes:	WB,1:500 - 1:2000,IHC,1:50 - 1:200,IF,1:50 - 1:200
Comment:	HIGH QUALITY
Restrictions:	For Research Use only

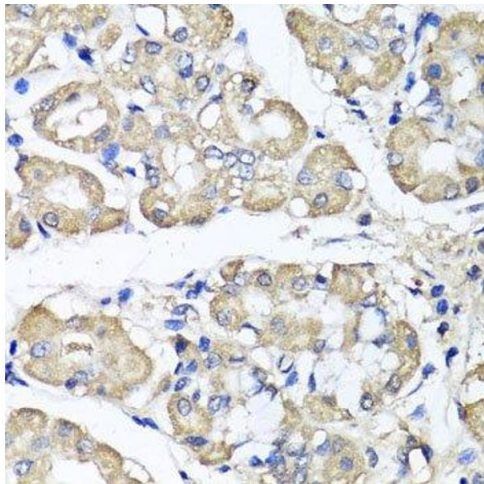
Handling

Format:	Liquid
Buffer:	PBS with 0.02 % sodium azide,50 % glycerol, pH 7.3.
Preservative:	Sodium azide
Precaution of Use:	This product contains Sodium azide: a POISONOUS AND HAZARDOUS SUBSTANCE which should be handled by trained staff only.
Storage:	-20 °C
Storage Comment:	Store at -20°C. Avoid freeze / thaw cycles.



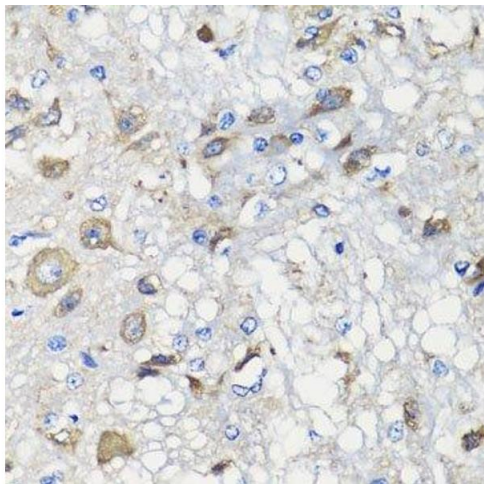
Western Blotting

Image 1. Western blot analysis of extracts of various cell lines, using BCS1L antibody.



Immunohistochemistry (Paraffin-embedded Sections)

Image 2. Immunohistochemistry of paraffin-embedded human stomach using BCS1L antibody.



Immunohistochemistry (Paraffin-embedded Sections)

Image 3. Immunohistochemistry of paraffin-embedded rat brain using BCS1L antibody.

Please check the [product details page](#) for more images. Overall 4 images are available for ABIN6137520.