



[Go to Product page](#)

Datasheet for ABIN6137587
anti-BMF antibody (AA 1-184)

1 Image

Overview

Quantity:	100 µL
Target:	BMF
Binding Specificity:	AA 1-184
Reactivity:	Human
Host:	Rabbit
Clonality:	Polyclonal
Conjugate:	This BMF antibody is un-conjugated
Application:	Western Blotting (WB)

Product Details

Immunogen:	Recombinant fusion protein containing a sequence corresponding to amino acids 1-184 of human BMF (NP_277038.1).
Sequence:	MEPSQCVEEL EDDVFQPEDG EPVTQPGSLL SADLFAQSLL DCPLSRLQLF PLTHCCGPGL RPTSQEDKAT QTLSPASPSQ GVMLPCGVTE EPQRLFYGNA GYRLPLPASV PAVLPIGEQP PEGQWQHQAQ VQIARKLQCI ADQFHRLHVQ QHQQNQNRVW WQILLFLHNL ALNGEENRNG AGPR
Isotype:	IgG
Cross-Reactivity:	Human, Mouse, Rat
Characteristics:	Polyclonal Antibodies
Purification:	Affinity purification

Target Details

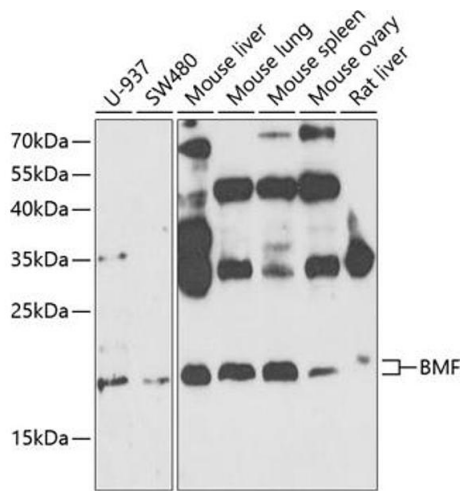
Target:	BMF
Alternative Name:	BMF (BMF Products)
Background:	<p>The protein encoded by this gene belongs to the BCL2 protein family. BCL2 family members form hetero- or homodimers and act as anti- or pro-apoptotic regulators that are involved in a wide variety of cellular activities. This protein contains a single BCL2 homology domain 3 (BH3), and has been shown to bind BCL2 proteins and function as an apoptotic activator. This protein is found to be sequestered to myosin V motors by its association with dynein light chain 2, which may be important for sensing intracellular damage and triggering apoptosis. Alternatively spliced transcript variants encoding different isoforms have been identified.,BMF,Signal Transduction,Cell Biology & Developmental Biology,Apoptosis,Mitochondrial Control of Apoptosis,Cytoskeleton,Motor Proteins,BMF</p>
Molecular Weight:	14 kDa/17 kDa/20 kDa
Gene ID:	90427
UniProt:	Q96LC9

Application Details

Application Notes:	WB,1:500 - 1:2000
Restrictions:	For Research Use only

Handling

Format:	Liquid
Buffer:	PBS with 0.02 % sodium azide,50 % glycerol, pH 7.3.
Preservative:	Sodium azide
Precaution of Use:	This product contains Sodium azide: a POISONOUS AND HAZARDOUS SUBSTANCE which should be handled by trained staff only.
Storage:	-20 °C
Storage Comment:	Store at -20°C. Avoid freeze / thaw cycles.



Western Blotting

Image 1. Western blot analysis of extracts of various cell lines, using BMF antibody (ABIN6127487, ABIN6137587, ABIN6137589 and ABIN6221479) at 1:1000 dilution. Secondary antibody: HRP Goat Anti-Rabbit IgG (H+L) (ABIN1684268 and ABIN3020597) at 1:10000 dilution. Lysates/proteins: 25 µg per lane. Blocking buffer: 3 % nonfat dry milk in TBST. Detection: ECL Enhanced Kit (RM00021). Exposure time: 90s.