



[Go to Product page](#)

Datasheet for ABIN6137632
anti-BPI antibody (AA 248-487)

1 Image

Overview

Quantity:	100 µL
Target:	BPI
Binding Specificity:	AA 248-487
Reactivity:	Human
Host:	Rabbit
Clonality:	Polyclonal
Conjugate:	This BPI antibody is un-conjugated
Application:	Western Blotting (WB)

Product Details

Immunogen:	Recombinant fusion protein containing a sequence corresponding to amino acids 248-487 of human BPI (NP_001716.2).
Sequence:	AETLDVQMKG EFYSENHHNP PPFAPPVMEF PAAHDRMVYL GLSDYFFNTA GLVYQEAGVL KMTLRDDMIP KESKFRLLTK FFGTFLPEVA KKFPNMKIQI HVSASTPPHL SVQPTGLTFY PAVDVQAFV LPNSSLASLF LIGMHTTGSM EVSAESNRLV GELKLDRLLL ELKHSNIGPF PVELLQDIMN YIVPILVLPR VNEKLQKGFP LTPPARVQLY NVVLQPHQNF LLFGADVVK
Isotype:	IgG
Cross-Reactivity:	Human, Mouse
Characteristics:	Polyclonal Antibodies
Purification:	Affinity purification

Target Details

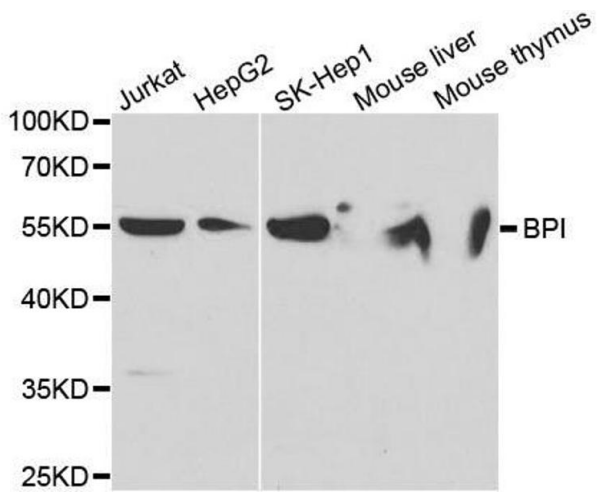
Target:	BPI
Alternative Name:	BPI (BPI Products)
Background:	This gene encodes a lipopolysaccharide binding protein. It is associated with human neutrophil granules and has antimicrobial activity against gram-negative organisms.,BPI,BPIFD1,rBPI,Cell Biology & Developmental Biology,Apoptosis,Endocrine & Metabolism,Immunology & Inflammation,Cell Intrinsic Innate Immunity Signaling Pathway,BPI
Molecular Weight:	53 kDa
Gene ID:	671
UniProt:	P17213

Application Details

Application Notes:	WB,1:500 - 1:2000
Comment:	HIGH QUALITY
Restrictions:	For Research Use only

Handling

Format:	Liquid
Buffer:	PBS with 0.02 % sodium azide,50 % glycerol, pH 7.3.
Preservative:	Sodium azide
Precaution of Use:	This product contains Sodium azide: a POISONOUS AND HAZARDOUS SUBSTANCE which should be handled by trained staff only.
Storage:	-20 °C
Storage Comment:	Store at -20°C. Avoid freeze / thaw cycles.



Western Blotting

Image 1. Western blot analysis of extracts of various cell lines, using BPI antibody.