

Datasheet for ABIN6137672

anti-Bystin-Like antibody (AA 120-280)**4** Images[Go to Product page](#)

Overview

Quantity:	100 µL
Target:	Bystin-Like (BYSL)
Binding Specificity:	AA 120-280
Reactivity:	Human
Host:	Rabbit
Clonality:	Polyclonal
Conjugate:	This Bystin-Like antibody is un-conjugated
Application:	Western Blotting (WB), Immunofluorescence (IF), Immunohistochemistry (IHC)

Product Details

Immunogen:	Recombinant fusion protein containing a sequence corresponding to amino acids 120-280 of human BYSL (NP_004044.3).
Sequence:	HAEEVVDPED ERAIEMFMNK NPPARRTLAD IIMEKLTEKQ TEVETVMSEV SGFPMPQLDP RVLEVYRGVR EVLSKYRSGK LPKAFKIIPA LSNWEQILYV TEPEAWTAAA MYQATRIFAS NLKERMAQRF YNLVLLPRVR DDVAEYKRLN FHYLMALKKA L
Isotype:	IgG
Cross-Reactivity:	Human, Mouse, Rat
Characteristics:	Polyclonal Antibodies
Purification:	Affinity purification

Target Details

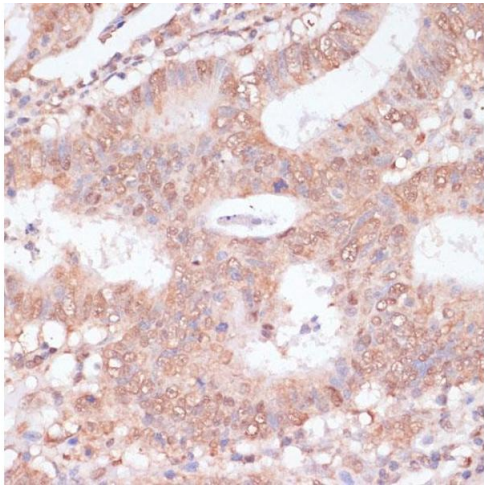
Target:	Bystin-Like (BYSL)
Alternative Name:	BYSL (BYSL Products)
Background:	Bystin is expressed as a 2-kb major transcript and a 3.6-kb minor transcript in SNG-M cells and in human trophoblastic teratocarcinoma HT-H cells. Protein binding assays determined that bystin binds directly to trophinin and tastin, and that binding is enhanced when cytokeratins 8 and 18 are present. Immunocytochemistry of HT-H cells showed that bystin colocalizes with trophinin, tastin, and the cytokeratins, suggesting that these molecules form a complex in trophectoderm cells at the time of implantation. Using immunohistochemistry it was determined that trophinin and bystin are found in the placenta from the sixth week of pregnancy. Both proteins were localized in the cytoplasm of the syncytiotrophoblast in the chorionic villi and in endometrial decidual cells at the uteroplacental interface. After week 10, the levels of trophinin, tastin, and bystin decreased and then disappeared from placental villi.,BYSL,BYSTIN,bystin,Epigenetics & Nuclear Signaling,RNA Binding,BYSL
Molecular Weight:	49 kDa
Gene ID:	705
UniProt:	Q13895
Pathways:	Cellular Response to Molecule of Bacterial Origin

Application Details

Application Notes:	WB,1:500 - 1:2000,IHC,1:50 - 1:100,IF,1:50 - 1:100
Restrictions:	For Research Use only

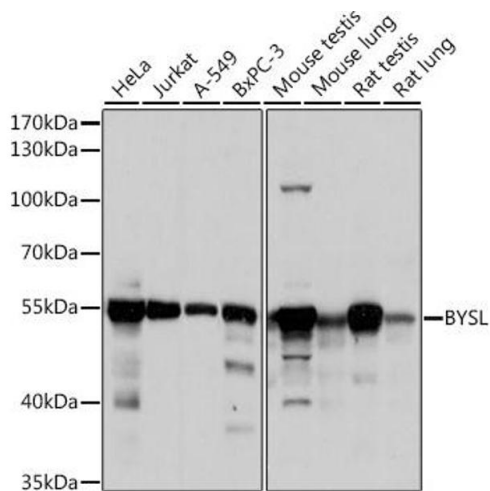
Handling

Format:	Liquid
Buffer:	PBS with 0.02 % sodium azide,50 % glycerol, pH 7.3.
Preservative:	Sodium azide
Precaution of Use:	This product contains Sodium azide: a POISONOUS AND HAZARDOUS SUBSTANCE which should be handled by trained staff only.
Storage:	-20 °C
Storage Comment:	Store at -20°C. Avoid freeze / thaw cycles.



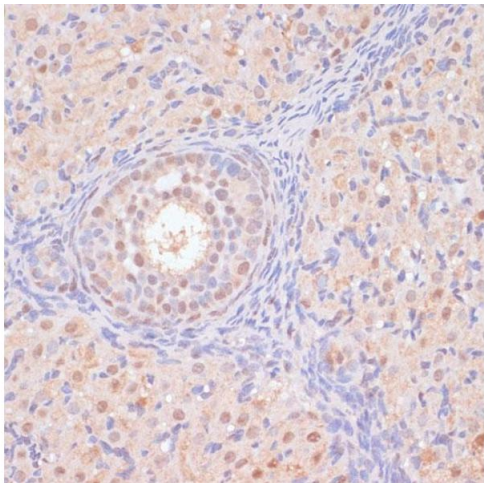
Immunohistochemistry

Image 1. Immunohistochemistry of paraffin-embedded human colon carcinoma using BYSL antibody (ABIN6129546, ABIN6137672, ABIN6137674 and ABIN6215553) at dilution of 1:100 (40x lens). Perform microwave antigen retrieval with 10 mM PBS buffer pH 7.2 before commencing with IHC staining protocol.



Western Blotting

Image 2. Western blot analysis of extracts of various cell lines, using BYSL antibody (ABIN6129546, ABIN6137672, ABIN6137674 and ABIN6215553) at 1:1000 dilution. Secondary antibody: HRP Goat Anti-Rabbit IgG (H+L) (ABIN1684268 and ABIN3020597) at 1:10000 dilution. Lysates/proteins: 25 µg per lane. Blocking buffer: 3 % nonfat dry milk in TBST. Detection: ECL Basic Kit (RM00020). Exposure time: 10s.



Immunohistochemistry

Image 3. Immunohistochemistry of paraffin-embedded rat ovary using BYSL antibody (ABIN6129546, ABIN6137672, ABIN6137674 and ABIN6215553) at dilution of 1:100 (40x lens). Perform microwave antigen retrieval with 10 mM PBS buffer pH 7.2 before commencing with IHC staining protocol.

Please check the [product details page](#) for more images. Overall 4 images are available for ABIN6137672.