

Datasheet for ABIN6137676
anti-BTAF1 antibody (AA 1600-1849)



[Go to Product page](#)

3 Images

Overview

Quantity:	100 µL
Target:	BTAF1
Binding Specificity:	AA 1600-1849
Reactivity:	Human
Host:	Rabbit
Clonality:	Polyclonal
Conjugate:	This BTAF1 antibody is un-conjugated
Application:	Immunoprecipitation (IP), Western Blotting (WB), Chromatin Immunoprecipitation (ChIP), Immunohistochemistry (IHC)

Product Details

Immunogen:	Recombinant fusion protein containing a sequence corresponding to amino acids 1600-1849 of human BTAF1 (NP_003963.1).
Sequence:	LAVQNSSLHD IQHAPKLSAL KQLLLDCGLG NGSTSESGTE SVVAQHRILI FCQLKSMLDI VEHDLLKPHL PSVTYLRLDG SIPPQQRHSI VSRFNNDPSI DVLLLTTTHVG GLGLNLTGAD TVVFVEHDWN PMRDLQAMDR AHRIGQKRVV NVYRLITRGT LEEKIMGLQK FKMNIANTVI SQENSSLQSM GTDQLLDLFT LDKDGKAEKA DTSTSGKASM KSILENLSDL WDQEQYDSEY SLENFMHSLK
Isotype:	IgG
Cross-Reactivity:	Human, Rat
Characteristics:	Polyclonal Antibodies

Product Details

Purification: Affinity purification

Target Details

Target: BTAF1

Alternative Name: BTAF1 ([BTAF1 Products](#))

Background: This gene encodes a TAF (TATA box-binding protein-associated factor), which associates with TBP (TATA box-binding protein) to form the B-TFIIID complex that is required for transcription initiation of genes by RNA polymerase II. This TAF has DNA-dependent ATPase activity, which drives the dissociation of TBP from DNA, freeing the TBP to associate with other TATA boxes or TATA-less promoters.,BTAF1,MOT1,TAF(II)170,TAF172,TAFII170,Epigenetics & Nuclear Signaling,BTAF1

Molecular Weight: 76 kDa/206 kDa

Gene ID: 9044

UniProt: [O14981](#)

Application Details

Application Notes: WB,1:500 - 1:2000,IHC,1:50 - 1:200,IP,1:20 - 1:50,ChIP,1:20 - 1:100

Comment: HIGH QUALITY

Restrictions: For Research Use only

Handling

Format: Liquid

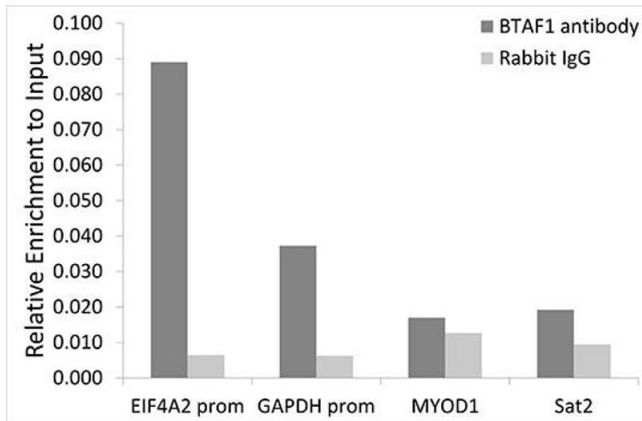
Buffer: PBS with 0.02 % sodium azide,50 % glycerol, pH 7.3.

Preservative: Sodium azide

Precaution of Use: This product contains Sodium azide: a POISONOUS AND HAZARDOUS SUBSTANCE which should be handled by trained staff only.

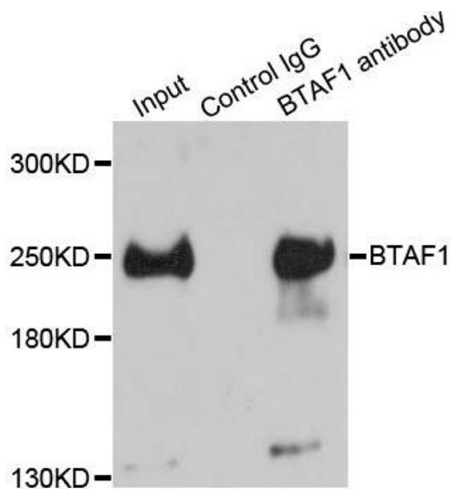
Storage: -20 °C

Storage Comment: Store at -20°C. Avoid freeze / thaw cycles.



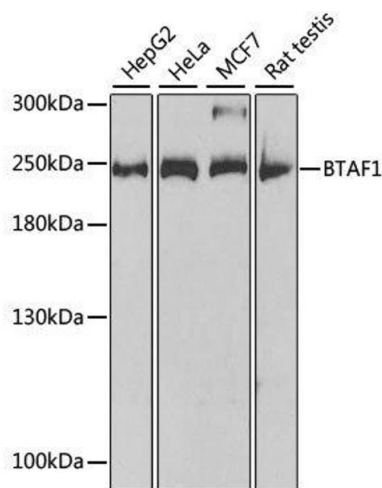
Chromatin Immunoprecipitation

Image 1. Chromatin immunoprecipitation analysis of extracts of HeLa cells, using BT antibody (ABIN6129999, ABIN6137676, ABIN6137677 and ABIN6221500) and rabbit IgG. The amount of immunoprecipitated DNA was checked by quantitative PCR. Histogram was constructed by the ratios of the immunoprecipitated DNA to the input.



Immunoprecipitation

Image 2. Immunoprecipitation analysis of 150ug extracts of HeLa cells using 3ug BTAF1 antibody.



Western Blotting

Image 3. Western blot analysis of extracts of various cell lines, using BTAF1 antibody.