

Datasheet for ABIN6137704
anti-BUB3 antibody (AA 1-328)



[Go to Product page](#)

2 Images

Overview

Quantity:	100 µL
Target:	BUB3
Binding Specificity:	AA 1-328
Reactivity:	Human
Host:	Rabbit
Clonality:	Polyclonal
Conjugate:	This BUB3 antibody is un-conjugated
Application:	Western Blotting (WB), Immunofluorescence (IF)

Product Details

Immunogen:	Recombinant fusion protein containing a sequence corresponding to amino acids 1-328 of human BUB3 (NP_004716.1).
Sequence:	MTGSNEFKLN QPPEDGISSV KFSPNTSQFL LVSSWDTSVR LYDVPANSMR LKYQHTGAVL DCAFYDPTHA WSGGLDHQLK MHDLNLDQEN LVGTHDAPIR CVEYCPEVNV MVTGSWDQTV KLWDPRTPCN AGTFSQPEKV YTLVSGDRL IVGTAGRRVL VWDLRNMGYV QQRRESSLKY QTRCIRAFPN KQGYVLSSIE GRVAVEYLDP SPEVQKKKYA FKCHRLKENN IEQIYPVNAI SFHNIHNTFA TGGSDGFVNI WDPFNKKRLC QFHRYPTSIA SLAFSNDGTT LAIASSYMYE MDDTEHPEDG IFIRQVTD AE TKPKSPCT
Isotype:	IgG
Cross-Reactivity:	Human, Mouse, Rat
Characteristics:	Polyclonal Antibodies

Product Details

Purification: Affinity purification

Target Details

Target: BUB3

Alternative Name: BUB3 ([BUB3 Products](#))

Background: This gene encodes a protein involved in spindle checkpoint function. The encoded protein contains four WD repeat domains and has sequence similarity with the yeast BUB3 protein. Alternate transcriptional splice variants, encoding different isoforms, have been characterized.,BUB3,BUB3L,hBUB3,Cell Biology & Developmental Biology,Cell Cycle,Centromere,BUB3

Molecular Weight: 36 kDa/37 kDa

Gene ID: 9184

UniProt: [O43684](#)

Pathways: [Maintenance of Protein Location](#)

Application Details

Application Notes: WB,1:500 - 1:2000,IF,1:50 - 1:200

Comment: HIGH QUALITY

Restrictions: For Research Use only

Handling

Format: Liquid

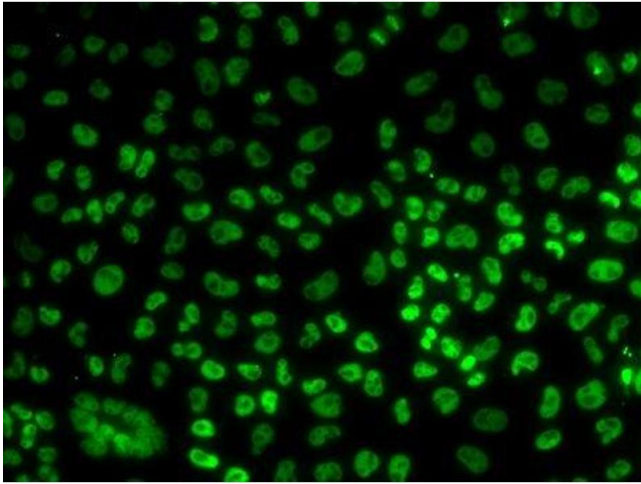
Buffer: PBS with 0.02 % sodium azide,50 % glycerol, pH 7.3.

Preservative: Sodium azide

Precaution of Use: This product contains Sodium azide: a POISONOUS AND HAZARDOUS SUBSTANCE which should be handled by trained staff only.

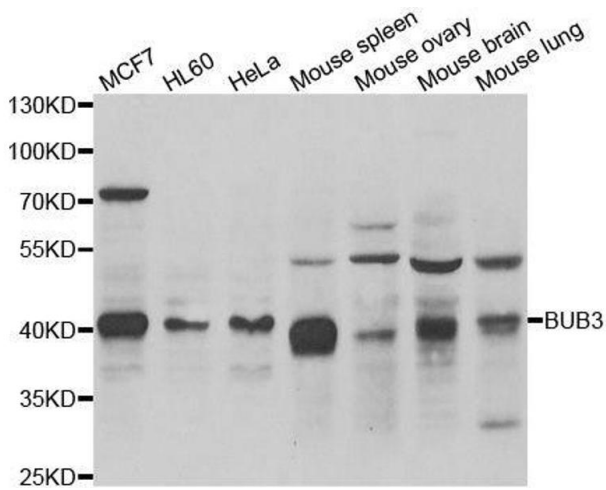
Storage: -20 °C

Storage Comment: Store at -20°C. Avoid freeze / thaw cycles.



Immunofluorescence

Image 1. Immunofluorescence analysis of U2OS cells using BUB3 antibody.



Western Blotting

Image 2. Western blot analysis of extracts of various cell lines, using BUB3 antibody.