

Datasheet for ABIN6137751
anti-C1QA antibody (AA 23-245)



[Go to Product page](#)

1 Image

1 Publication

Overview

Quantity:	100 µL
Target:	C1QA
Binding Specificity:	AA 23-245
Reactivity:	Human
Host:	Rabbit
Clonality:	Polyclonal
Conjugate:	This C1QA antibody is un-conjugated
Application:	Western Blotting (WB)

Product Details

Immunogen:	Recombinant fusion protein containing a sequence corresponding to amino acids 23-245 of human C1QA (NP_057075.1).
Sequence:	EDLCRAPDGK KGEAGRPGR GRPGLKGEQG EPGAPGIRTG IQGLKGDQGE PGPSGNPGKV GYPGPSGPLG ARGIPGIKGT KGSPGNIKDQ PRPAFSAIRR NPPMGGNVVI FDTVITNQEE PYQNHSGRFV CTVPGYYYFT FQVLSQWEIC LSIVSSSRGQ VRRSLGFCDT TNKGLFQVVS GGMVLQLQQG DQVWVEKDPK KGHYQGSEA DSVFSGFLIF PSA
Isotype:	IgG
Cross-Reactivity:	Mouse
Characteristics:	Polyclonal Antibodies
Purification:	Affinity purification

Target Details

Target:	C1QA
Alternative Name:	C1QA (C1QA Products)
Background:	<p>This gene encodes a major constituent of the human complement subcomponent C1q. C1q associates with C1r and C1s in order to yield the first component of the serum complement system. Deficiency of C1q has been associated with lupus erythematosus and glomerulonephritis. C1q is composed of 18 polypeptide chains: six A-chains, six B-chains, and six C-chains. Each chain contains a collagen-like region located near the N terminus and a C-terminal globular region. The A-, B-, and C-chains are arranged in the order A-C-B on chromosome 1. This gene encodes the A-chain polypeptide of human complement subcomponent C1q.,C1QA,Immunology & Inflammation,Cell Intrinsic Innate Immunity Signaling Pathway,Neuroscience,Neurodegenerative Diseases,C1QA</p>
Molecular Weight:	26 kDa
Gene ID:	712
UniProt:	P02745
Pathways:	Complement System

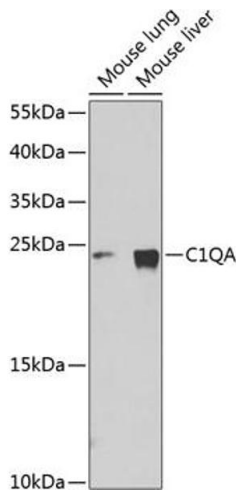
Application Details

Application Notes:	WB,1:500 - 1:2000
Comment:	HIGH QUALITY
Restrictions:	For Research Use only

Handling

Format:	Liquid
Buffer:	PBS with 0.02 % sodium azide,50 % glycerol, pH 7.3.
Preservative:	Sodium azide
Precaution of Use:	This product contains Sodium azide: a POISONOUS AND HAZARDOUS SUBSTANCE which should be handled by trained staff only.
Storage:	-20 °C
Storage Comment:	Store at -20°C. Avoid freeze / thaw cycles.

Product cited in: Deng, Xu, Fang, Yu, Zhu, Chen, Liu, Zhou: "The Surface-Exposed Protein SntA Contributes to Complement Evasion in Zoonotic *Streptococcus suis*." in: **Frontiers in immunology**, Vol. 9, pp. 1063, (2018) ([PubMed](#)).



Western Blotting

Image 1. Western blot analysis of extracts of various cell lines, using C1QA Antibody at 1:1000 dilution. Secondary antibody: HRP Goat Anti-Rabbit IgG (H+L) (ABIN1684268 and ABIN3020597) at 1:10000 dilution. Lysates/proteins: 25 µg per lane. Blocking buffer: 3% nonfat dry milk in TBST. Detection: ECL Basic Kit (RM00020).