



[Go to Product page](#)

Datasheet for ABIN6137761  
**anti-C1R antibody (AA 466-705)**

2 Images

Overview

Quantity:	100 µL
Target:	C1R
Binding Specificity:	AA 466-705
Reactivity:	Human
Host:	Rabbit
Clonality:	Polyclonal
Conjugate:	This C1R antibody is un-conjugated
Application:	Western Blotting (WB), Immunofluorescence (IF)

Product Details

Immunogen:	Recombinant fusion protein containing a sequence corresponding to amino acids 466-705 of human C1R (NP_001724.3).
Sequence:	GGQKAKMGNF PWQVFTNIHG RGGGALLGDR WILTAAHTLY PKEHEAQSNA SLDVFLGHTN VEELMKLGNH PIRRVSVHPD YRQDESYNFE GDIALLELEN SVTLGPNLLP ICLPDNDTFY DLGLMGYVSG FGVMEEKIAH DLRFVRLPVA NPQACENWLR GKNRMDVFSQ NMFCAGHPSL KQDACQGDSG GVFAVRDPNT DRWVATGIVS WGIGCSRGYG FYTKVLNYVD WIKKEMEEED
Isotype:	IgG
Cross-Reactivity:	Human, Mouse, Rat
Characteristics:	Polyclonal Antibodies
Purification:	Affinity purification

## Target Details

---

Target:	C1R
Alternative Name:	C1R ( <a href="#">C1R Products</a> )
Background:	<p>The classical complement pathway plays a major role in innate immunity against infection. This pathway is triggered by C1, a multimolecular complex composed of the recognition protein C1q and two serine proteases, C1r and C1s. Following the C1q recognition, C1r is autoactivated, and in turn activates C1s, which cleaves C4 and C2, the C1 substrates. C1r acts by transforming the activation signal into an enzymic activity. C1r is a single-chain glycoprotein which can be cleaved into an A chain and a B chain upon activation. This protien recognizes full-length C1r chain and the cleaved B chain.,C1R,EDSPD1,Immunology &amp; Inflammation,Cell Intrinsic Innate Immunity Signaling Pathway,C1R</p>
Molecular Weight:	80 kDa
Gene ID:	715
UniProt:	<a href="#">P00736</a>
Pathways:	<a href="#">Complement System</a>

## Application Details

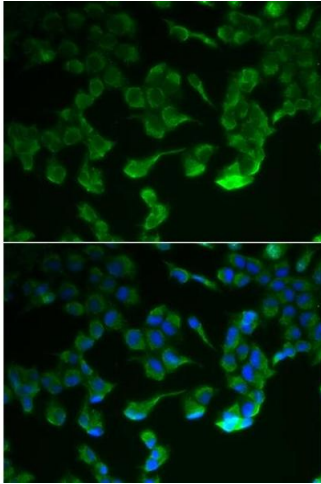
---

Application Notes:	WB,1:500 - 1:2000,IF,1:50 - 1:200
Comment:	HIGH QUALITY
Restrictions:	For Research Use only

## Handling

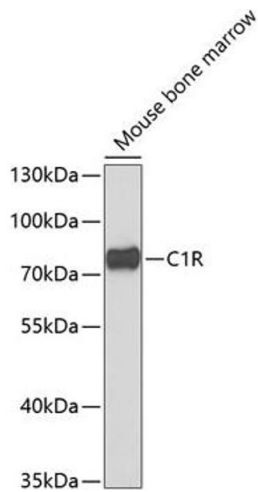
---

Format:	Liquid
Buffer:	PBS with 0.02 % sodium azide,50 % glycerol, pH 7.3.
Preservative:	Sodium azide
Precaution of Use:	This product contains Sodium azide: a POISONOUS AND HAZARDOUS SUBSTANCE which should be handled by trained staff only.
Storage:	-20 °C
Storage Comment:	Store at -20°C. Avoid freeze / thaw cycles.



### Immunofluorescence

**Image 1.** Immunofluorescence analysis of HeLa cells using C1R antibody (ABIN6129284, ABIN6137761, ABIN6137762 and ABIN6221975). Blue: DAPI for nuclear staining.



### Western Blotting

**Image 2.** Western blot analysis of extracts of mouse bone marrow, using C1R antibody (ABIN6129284, ABIN6137761, ABIN6137762 and ABIN6221975) at 1:1000 dilution. Secondary antibody: HRP Goat Anti-Rabbit IgG (H+L) (ABIN1684268 and ABIN3020597) at 1:10000 dilution. Lysates/proteins: 25 µg per lane. Blocking buffer: 3 % nonfat dry milk in TBST. Detection: ECL Enhanced Kit (RM00021). Exposure time: 90s.