



Datasheet for ABIN6137773
anti-C4BPA antibody (C-Term)



[Go to Product page](#)

2 Images

Overview

Quantity:	100 µL
Target:	C4BPA
Binding Specificity:	C-Term
Reactivity:	Human
Host:	Rabbit
Clonality:	Polyclonal
Conjugate:	This C4BPA antibody is un-conjugated
Application:	Western Blotting (WB), Immunohistochemistry (IHC)

Product Details

Immunogen:	A synthetic peptide corresponding to a sequence within amino acids 500 to the C-terminus of human C4BPA (NP_000706.1).
Sequence:	QYVEPENVTI QCDSGYGVVG PQSITCSG NR TWYPEVPKCE WETPEGCEQV LTGKRLMQCL PNPEDVKMAL EVYKLSLEIE QLELQRDSAR QSTLDKEL
Isotype:	IgG
Cross-Reactivity:	Human, Mouse, Rat
Characteristics:	Polyclonal Antibodies
Purification:	Affinity purification

Target Details

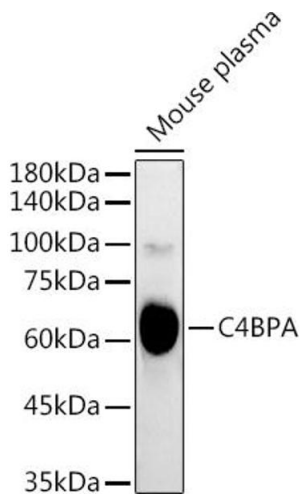
Target:	C4BPA
Alternative Name:	C4BPA (C4BPA Products)
Background:	This gene encodes a member of a superfamily of proteins composed predominantly of tandemly arrayed short consensus repeats of approximately 60 amino acids. Along with a single, unique beta-chain, seven identical alpha-chains encoded by this gene assemble into the predominant isoform of C4b-binding protein, a multimeric protein that controls activation of the complement cascade through the classical pathway. The genes encoding both alpha and beta chains are located adjacent to each other on human chromosome 1 in the regulator of complement activation gene cluster. Two pseudogenes of this gene are also found in the cluster.,C4BPA,C4BP,PRP,Epigenetics & Nuclear Signaling,RNA Binding,Immunology & Inflammation,Cell Intrinsic Innate Immunity Signaling Pathway,C4BPA
Molecular Weight:	67 kDa
Gene ID:	722
UniProt:	P04003
Pathways:	Complement System

Application Details

Application Notes:	WB,1:500 - 1:2000,IHC,1:50 - 1:100
Comment:	HIGH QUALITY
Restrictions:	For Research Use only

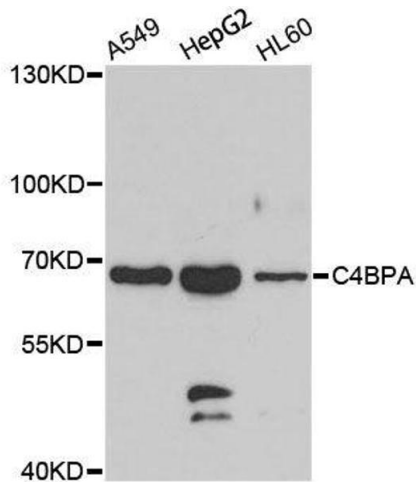
Handling

Format:	Liquid
Buffer:	PBS with 0.02 % sodium azide,50 % glycerol, pH 7.3.
Preservative:	Sodium azide
Precaution of Use:	This product contains Sodium azide: a POISONOUS AND HAZARDOUS SUBSTANCE which should be handled by trained staff only.
Storage:	-20 °C
Storage Comment:	Store at -20°C. Avoid freeze / thaw cycles.



Western Blotting

Image 1. Western blot analysis of extracts of Mouse plasma, using C4BPA antibody (ABIN6134574, ABIN6137773, ABIN6137774 and ABIN6223565) at 1:3000 dilution. Secondary antibody: HRP Goat Anti-Rabbit IgG (H+L) (ABIN1684268 and ABIN3020597) at 1:10000 dilution. Lysates/proteins: 25 µg per lane. Blocking buffer: 3 % nonfat dry milk in TBST. Detection: ECL Basic Kit (RM00020). Exposure time: 90s.



Western Blotting

Image 2. Western blot analysis of extracts of various cell lines, using C4BPA antibody.