

Datasheet for ABIN6137775 anti-C4BPB antibody (AA 18-251)



[Go to Product page](#)

1 Image

Overview

Quantity:	100 µL
Target:	C4BPB
Binding Specificity:	AA 18-251
Reactivity:	Human
Host:	Rabbit
Clonality:	Polyclonal
Conjugate:	This C4BPB antibody is un-conjugated
Application:	Western Blotting (WB)

Product Details

Immunogen:	Recombinant fusion protein containing a sequence corresponding to amino acids 18-251 of human C4BPB (NP_001017364.1).
Sequence:	SDEHCPPELPP VDNSIFVAKE VEGQILGTYV CIKGYHLVGK KTLFCNASKE WDNTTTECRL GHCPDPVLVN GEFSSSGPVN VSDKITFCN DHYILKGSNR SQCLEHTWA PFPICKSRD CDPPGNPVHG YFEGNNFTLG STISYYCEDR YYLVGVQEQQ CVDGEWSSAL PVCKLIQEAP KPECEKALLA FQESKNLCEA MENFMQQLKE SGMTMEELKY SLELKKAELK AKLL
Isotype:	IgG
Cross-Reactivity:	Human, Mouse, Rat
Characteristics:	Polyclonal Antibodies
Purification:	Affinity purification

Target Details

Target:	C4BPB
Alternative Name:	C4BPB (C4BPB Products)
Background:	<p>This gene encodes a member of a superfamily of proteins composed predominantly of tandemly arrayed short consensus repeats of approximately 60 amino acids. A single, unique beta-chain encoded by this gene assembles with seven identical alpha-chains into the predominant isoform of C4b-binding protein, a multimeric protein that controls activation of the complement cascade through the classical pathway. C4b-binding protein has a regulatory role in the coagulation system also, mediated through the beta-chain binding of protein S, a vitamin K-dependent protein that serves as a cofactor of activated protein C. The genes encoding both alpha and beta chains are located adjacent to each other on human chromosome 1 in the regulator of complement activation gene cluster. Alternative splicing gives rise to multiple transcript variants.,C4BPB,C4BP,Immunology & Inflammation,Cell Intrinsic Innate Immunity Signaling Pathway,C4BPB</p>
Molecular Weight:	28 kDa
Gene ID:	725
UniProt:	P20851
Pathways:	Complement System

Application Details

Application Notes:	WB,1:500 - 1:2000
Comment:	HIGH QUALITY
Restrictions:	For Research Use only

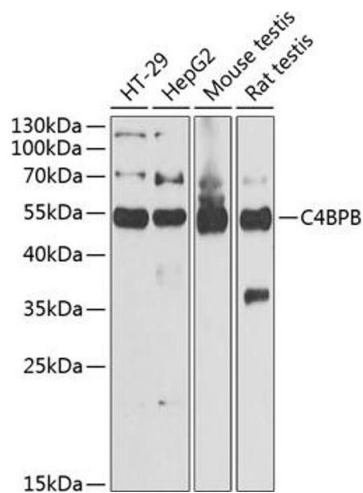
Handling

Format:	Liquid
Buffer:	PBS with 0.02 % sodium azide,50 % glycerol, pH 7.3.
Preservative:	Sodium azide
Precaution of Use:	This product contains Sodium azide: a POISONOUS AND HAZARDOUS SUBSTANCE which should be handled by trained staff only.
Storage:	-20 °C

Handling

Storage Comment: Store at -20°C. Avoid freeze / thaw cycles.

Images



Western Blotting

Image 1. Western blot analysis of extracts of various cell lines, using C4BPB antibody (ABIN6127735, ABIN6137775, ABIN6137776 and ABIN6221978) at 1:1000 dilution. Secondary antibody: HRP Goat Anti-Rabbit IgG (H+L) (ABIN1684268 and ABIN3020597) at 1:10000 dilution. Lysates/proteins: 25 µg per lane. Blocking buffer: 3 % nonfat dry milk in TBST. Detection: ECL Basic Kit (RM00020). Exposure time: 30s.