

Datasheet for ABIN6137802
anti-CAB39L antibody (AA 1-337)



[Go to Product page](#)

1 Image

Overview

Quantity:	100 µL
Target:	CAB39L
Binding Specificity:	AA 1-337
Reactivity:	Human
Host:	Rabbit
Clonality:	Polyclonal
Conjugate:	This CAB39L antibody is un-conjugated
Application:	Western Blotting (WB)

Product Details

Immunogen:	Recombinant fusion protein containing a sequence corresponding to amino acids 1-337 of human CAB39L (NP_112187.2).
Sequence:	MKKMPLFSKS HKNPAEIVKI LKDNLAILEK QDKKTDKASE EVSKSLQAMK EILCGTNEKE PPTAEVAQLA QELYSSGLLV TLIADLQLID FEGKKDVTQI FNNILRRQIG TRSPTVEYIS AHPHILFMLL KGYEAPQIAL RCGIMLRECI RHEPLAKIIL FSNQFRDFFK YVELSTFDIA SDAFATFKDL LTRHKVLVAD FLEQNYDTIF EDYEKLLQSE NYVTKRQSLK LLGELILDRH NFAIMTKYIS KPENLKLMMN LLRDKSPNIQ FEAHVFKVF VASPHKTQPI VEILLKNQPK LIEFLSSFQK ERTDDEQFAD EKNYLIKQIR DLKKTAP
Isotype:	IgG
Cross-Reactivity:	Human, Mouse
Characteristics:	Polyclonal Antibodies

Product Details

Purification: Affinity purification

Target Details

Target: CAB39L

Alternative Name: CAB39L ([CAB39L Products](#))

Background: Component of a complex that binds and activates STK11/LKB1. In the complex, required to stabilize the interaction between CAB39/MO25 (CAB39/MO25alpha or CAB39L/MO25beta and STK11/LKB1 (By similarity, CAB39L, MO25-BETA, MO2L, bA103J18.3, Cancer, Tumor biomarkers, Endocrine & Metabolism, AMPK Signaling Pathway, CAB39L

Molecular Weight: 39 kDa

Gene ID: 81617

UniProt: [Q9H9S4](#)

Application Details

Application Notes: WB, 1:500 - 1:2000

Comment: HIGH QUALITY

Restrictions: For Research Use only

Handling

Format: Liquid

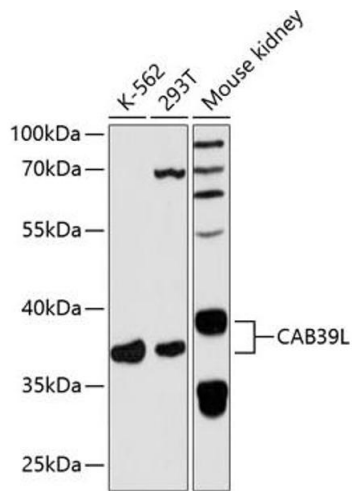
Buffer: PBS with 0.02 % sodium azide, 50 % glycerol, pH 7.3.

Preservative: Sodium azide

Precaution of Use: This product contains Sodium azide: a POISONOUS AND HAZARDOUS SUBSTANCE which should be handled by trained staff only.

Storage: -20 °C

Storage Comment: Store at -20°C. Avoid freeze / thaw cycles.



Western Blotting

Image 1. Western blot analysis of extracts of various cell lines, using CL antibody at 1:3000 dilution. Secondary antibody: HRP Goat Anti-Rabbit IgG (H+L) (ABIN1684268 and ABIN3020597) at 1:10000 dilution. Lysates/proteins: 25 µg per lane. Blocking buffer: 3% nonfat dry milk in TBST. Detection: ECL Basic Kit (RM00020). Exposure time: 90s.