

Datasheet for ABIN6137872
anti-Calmodulin 2 antibody (AA 1-149)[Go to Product page](#)

1 Image

Overview

Quantity:	100 µL
Target:	Calmodulin 2 (Calm2)
Binding Specificity:	AA 1-149
Reactivity:	Human
Host:	Rabbit
Clonality:	Polyclonal
Conjugate:	This Calmodulin 2 antibody is un-conjugated
Application:	Western Blotting (WB)

Product Details

Immunogen:	Recombinant fusion protein containing a sequence corresponding to amino acids 1-149 of human CALM2 (NP_001734.1).
Sequence:	MADQLTEEQI AEFKEAFSLF DKDGDGTITT KELGTVMRSL GQNPTEAELQ DMINEVDADG NGTIDFPEFL TMMARKMKDT DSEEEIREAF RVFDKDGNGY ISAAELRHVM TNLGEKLTDE EVDEMIREAD IDGDGQVNYE EFVQMMTAK
Isotype:	IgG
Cross-Reactivity:	Human, Mouse
Characteristics:	Polyclonal Antibodies
Purification:	Affinity purification

Target Details

Target:	Calmodulin 2 (Calm2)
Alternative Name:	CALM2 (Calm2 Products)
Background:	<p>This gene is a member of the calmodulin gene family. There are three distinct calmodulin genes dispersed throughout the genome that encode the identical protein, but differ at the nucleotide level. Calmodulin is a calcium binding protein that plays a role in signaling pathways, cell cycle progression and proliferation. Several infants with severe forms of long-QT syndrome (LQTS) who displayed life-threatening ventricular arrhythmias together with delayed neurodevelopment and epilepsy were found to have mutations in either this gene or another member of the calmodulin gene family (PMID:23388215). Mutations in this gene have also been identified in patients with less severe forms of LQTS (PMID:24917665), while mutations in another calmodulin gene family member have been associated with catecholaminergic polymorphic ventricular tachycardia (CPVT)(PMID:23040497), a rare disorder thought to be the cause of a significant fraction of sudden cardiac deaths in young individuals. Pseudogenes of this gene are found on chromosomes 10, 13, and 17. Alternative splicing results in multiple transcript variants encoding different isoforms.,CALM2,CAMII,LQT15,PHKD,PHKD2,caM,Signal Transduction,Kinase,ErbB-HER Signaling Pathway,Cell Biology & Developmental Biology,Cell Cycle,Centrosome,Cytoskeleton,Actins,Immunology & Inflammation,B Cell Receptor Signaling Pathway,T Cell Receptor Signaling Pathway,Neuroscience,Neurodegenerative Diseases,CALM2</p>
Molecular Weight:	17 kDa
Gene ID:	805
UniProt:	P62158
Pathways:	RTK Signaling , Interferon-gamma Pathway , Fc-epsilon Receptor Signaling Pathway , cAMP Metabolic Process , Myometrial Relaxation and Contraction , Cellular Glucan Metabolic Process , Regulation of G-Protein Coupled Receptor Protein Signaling , G-protein mediated Events , Signaling Events mediated by VEGFR1 and VEGFR2 , Interaction of EGFR with phospholipase C-gamma , Phototransduction , Negative Regulation of Transporter Activity , VEGFR1 Specific Signals , BCR Signaling

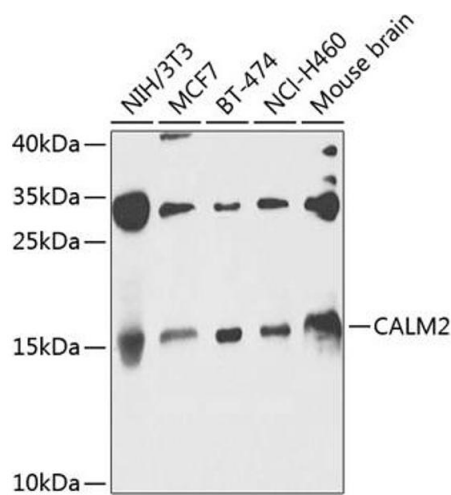
Application Details

Application Notes:	WB,1:500 - 1:2000
Comment:	HIGH QUALITY
Restrictions:	For Research Use only

Handling

Format:	Liquid
Buffer:	PBS with 0.02 % sodium azide,50 % glycerol, pH 7.3.
Preservative:	Sodium azide
Precaution of Use:	This product contains Sodium azide: a POISONOUS AND HAZARDOUS SUBSTANCE which should be handled by trained staff only.
Storage:	-20 °C
Storage Comment:	Store at -20°C. Avoid freeze / thaw cycles.

Images



Western Blotting

Image 1. Western blot analysis of extracts of various cell lines, using C antibody (ABIN6131465, ABIN6137872, ABIN6137873 and ABIN6224031) at 1:1000 dilution. Secondary antibody: HRP Goat Anti-Rabbit IgG (H+L) (ABIN1684268 and ABIN3020597) at 1:10000 dilution. Lysates/proteins: 25 µg per lane. Blocking buffer: 3 % nonfat dry milk in TBST. Detection: ECL Basic Kit (RM00020). Exposure time: 30s.