



[Go to Product page](#)

Datasheet for ABIN6137941
anti-C9orf89 antibody (AA 1-100)

1 Image

Overview

Quantity:	100 µL
Target:	C9orf89
Binding Specificity:	AA 1-100
Reactivity:	Human
Host:	Rabbit
Clonality:	Polyclonal
Conjugate:	This C9orf89 antibody is un-conjugated
Application:	Immunohistochemistry (IHC), Western Blotting (WB)

Product Details

Immunogen:	Recombinant fusion protein containing a sequence corresponding to amino acids 1-100 of human CARD19 (NP_115686.3).
Sequence:	MTDQTYCDRL VQDTPFLTGH GRLSEQQVDR IILQLNRYYP QILTNEAEK FRNPKASLRV RLCDLLSHLQ RSGERDCQEF YRALYIHAQP LHSRLPSRHA
Isotype:	IgG
Cross-Reactivity:	Human, Mouse
Characteristics:	Polyclonal Antibodies
Purification:	Affinity purification

Target Details

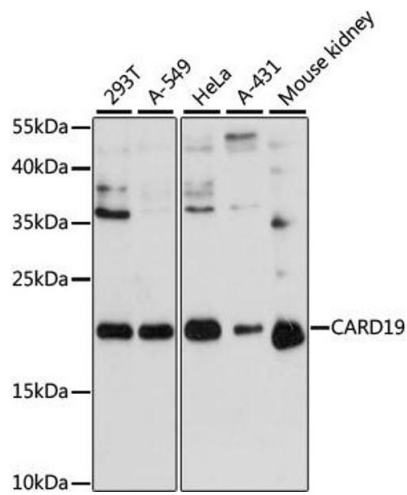
Target:	C9orf89
Alternative Name:	CARD19 (C9orf89 Products)
Background:	Plays a role in inhibiting the effects of BCL10-induced activation of NF-kappa-B. May inhibit the phosphorylation of BCL10 in a CARD-dependent manner.,CARD19,BinCARD,C9orf89,Signal Transduction,CARD19
Molecular Weight:	20 kDa/25 kDa
Gene ID:	84270
UniProt:	Q96LW7

Application Details

Application Notes:	WB,1:500 - 1:2000,IHC,1:50 - 1:100
Comment:	HIGH QUALITY
Restrictions:	For Research Use only

Handling

Format:	Liquid
Buffer:	PBS with 0.02 % sodium azide,50 % glycerol, pH 7.3.
Preservative:	Sodium azide
Precaution of Use:	This product contains Sodium azide: a POISONOUS AND HAZARDOUS SUBSTANCE which should be handled by trained staff only.
Storage:	-20 °C
Storage Comment:	Store at -20°C. Avoid freeze / thaw cycles.



Western Blotting

Image 1. Western blot analysis of extracts of various cell lines, using C antibody (ABIN6127784, ABIN6137941, ABIN6137942 and ABIN6217103) at 1:3000 dilution. Secondary antibody: HRP Goat Anti-Rabbit IgG (H+L) (ABIN1684268 and ABIN3020597) at 1:10000 dilution. Lysates/proteins: 25 µg per lane. Blocking buffer: 3 % nonfat dry milk in TBST. Detection: ECL Enhanced Kit (RM00021). Exposure time: 90s.