



[Go to Product page](#)

Datasheet for ABIN6137949
anti-CARTPT antibody (AA 28-116)

2 Images

Overview

Quantity:	100 µL
Target:	CARTPT
Binding Specificity:	AA 28-116
Reactivity:	Human
Host:	Rabbit
Clonality:	Polyclonal
Conjugate:	This CARTPT antibody is un-conjugated
Application:	Western Blotting (WB), Immunofluorescence (IF)

Product Details

Immunogen:	Recombinant fusion protein containing a sequence corresponding to amino acids 28-116 of human CART (NP_004282.1).
Sequence:	QEDAELQPRA LDIYSAVDDA SHEKELIEAL QEVLKCLKSK RVPIYEKKYG QVPMCDAGEQ CAVRKGARIG KLCDCPRGTS CNSFLLKCL
Isotype:	IgG
Cross-Reactivity:	Human, Mouse
Characteristics:	Polyclonal Antibodies
Purification:	Affinity purification

Target Details

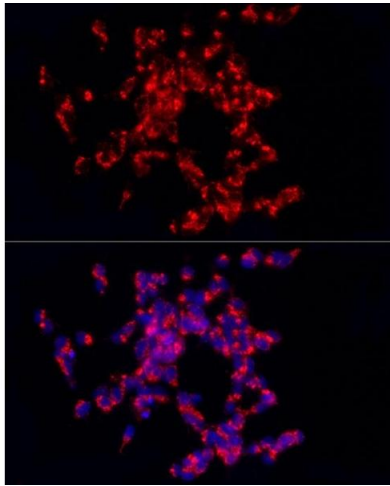
Target:	CARTPT
Alternative Name:	CARTPT (CARTPT Products)
Background:	<p>This gene encodes a preproprotein that is proteolytically processed to generate multiple biologically active peptides. These peptides play a role in appetite, energy balance, maintenance of body weight, reward and addiction, and the stress response. Expression of a similar gene transcript in rodents is upregulated following administration of cocaine and amphetamine. Mutations in this gene are associated with susceptibility to obesity in humans.,CART,CARTPT,Signal Transduction,Kinase,Cell Biology & Developmental Biology,Cytoskeleton,Extracellular Matrix,Bone,Endocrine & Metabolism,Neuroscience,CARTPT</p>
Molecular Weight:	12 kDa
Gene ID:	9607
UniProt:	Q16568
Pathways:	Hormone Transport , Negative Regulation of Hormone Secretion , Carbohydrate Homeostasis , Feeding Behaviour

Application Details

Application Notes:	WB,1:500 - 1:2000,IF,1:50 - 1:200
Comment:	HIGH QUALITY
Restrictions:	For Research Use only

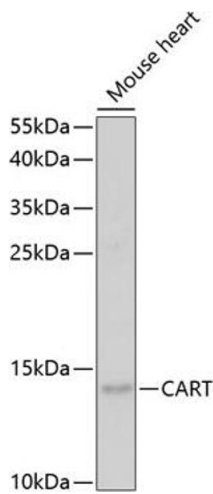
Handling

Format:	Liquid
Buffer:	PBS with 0.02 % sodium azide,50 % glycerol, pH 7.3.
Preservative:	Sodium azide
Precaution of Use:	This product contains Sodium azide: a POISONOUS AND HAZARDOUS SUBSTANCE which should be handled by trained staff only.
Storage:	-20 °C
Storage Comment:	Store at -20°C. Avoid freeze / thaw cycles.



Immunofluorescence

Image 1. Immunofluorescence analysis of SH-SY5Y cells using CART Rabbit pAb (ABIN6131305, ABIN6137949, ABIN6137950 and ABIN6221042) at dilution of 1:250 (40x lens). Blue: DAPI for nuclear staining.



Western Blotting

Image 2. Western blot analysis of extracts of mouse heart, using CART antibody (ABIN6131305, ABIN6137949, ABIN6137950 and ABIN6221042) at 1:1000 dilution. Secondary antibody: HRP Goat Anti-Rabbit IgG (H+L) (ABIN1684268 and ABIN3020597) at 1:10000 dilution. Lysates/proteins: 25 µg per lane. Blocking buffer: 3 % nonfat dry milk in TBST. Detection: ECL Enhanced Kit (RM00021). Exposure time: 3 min.