



Datasheet for ABIN6137998
anti-CBFA2T2 antibody (AA 325-604)



[Go to Product page](#)

2 Images

Overview

Quantity:	100 µL
Target:	CBFA2T2
Binding Specificity:	AA 325-604
Reactivity:	Human
Host:	Rabbit
Clonality:	Polyclonal
Conjugate:	This CBFA2T2 antibody is un-conjugated
Application:	Western Blotting (WB), Immunofluorescence (IF)

Product Details

Immunogen:	Recombinant fusion protein containing a sequence corresponding to amino acids 325-604 of human CBFA2T2 (NP_005084.1).
Sequence:	GLNGGYQDEL VDHRLTEREW ADEWKHLDHA LNCIMEMVEK TRRSMAVLRR CQESDREELN YWKRRYNENT ELRKTGTGLV SRQHSPGSAD SLSNDSQREF NSRPGTGYVP VEFWKKTEEA VNKVKIQAMS EVQKAVAEAE QKAFEVIATE RARMEQTIAD VKRQAAEDAF LVINEQEEST ENCWNCGRKA SETCSGCNIA RYCGSFCQHK DWERHHR LCG QNLHGQSPHG QGRPLLPVGR GSSARSADCS VPSPALDKTS ATTSRSSTPA SVTAIDTNGL
Isotype:	IgG
Cross-Reactivity:	Human, Mouse, Rat
Characteristics:	Polyclonal Antibodies
Purification:	Affinity purification

Target Details

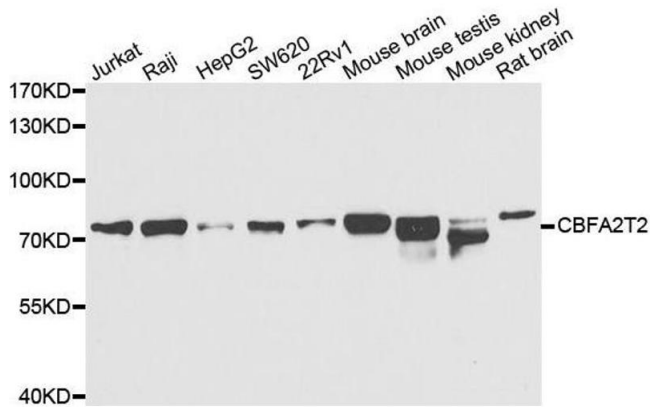
Target:	CBFA2T2
Alternative Name:	CBFA2T2 (CBFA2T2 Products)
Background:	<p>In acute myeloid leukemia, especially in the M2 subtype, the t(8,21)(q22,q22) translocation is one of the most frequent karyotypic abnormalities. The translocation produces a chimeric gene made up of the 5'-region of the RUNX1 (AML1) gene fused to the 3'-region of the CBFA2T1 (MTG8) gene. The chimeric protein is thought to associate with the nuclear corepressor/histone deacetylase complex to block hematopoietic differentiation. The protein encoded by this gene binds to the AML1-MTG8 complex and may be important in promoting leukemogenesis. Several transcript variants are thought to exist for this gene, but the full-length natures of only three have been described.,CBFA2T2,EHT,MTGR1,ZMYND3,p85,CBFA2T2</p>
Molecular Weight:	28 kDa/63 kDa/65 kDa/67 kDa
Gene ID:	9139
UniProt:	O43439

Application Details

Application Notes:	WB,1:500 - 1:2000,IF,1:50 - 1:100
Comment:	HIGH QUALITY
Restrictions:	For Research Use only

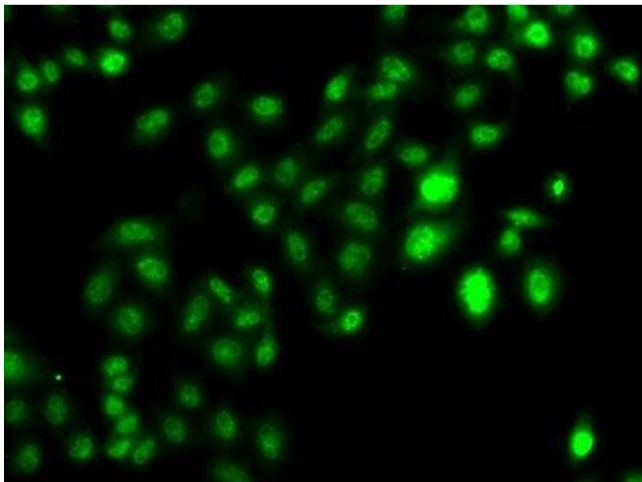
Handling

Format:	Liquid
Buffer:	PBS with 0.02 % sodium azide,50 % glycerol, pH 7.3.
Preservative:	Sodium azide
Precaution of Use:	This product contains Sodium azide: a POISONOUS AND HAZARDOUS SUBSTANCE which should be handled by trained staff only.
Storage:	-20 °C
Storage Comment:	Store at -20°C. Avoid freeze / thaw cycles.



Western Blotting

Image 1. Western blot analysis of extracts of various cell lines, using CBFA2T2 antibody.



Immunofluorescence

Image 2. Immunofluorescence analysis of U2OS cells using CBFA2T2 antibody.