

Datasheet for ABIN6138011  
**anti-CBR1 antibody (AA 1-277)**



[Go to Product page](#)

2 Images

## Overview

Quantity:	100 µL
Target:	CBR1
Binding Specificity:	AA 1-277
Reactivity:	Human
Host:	Rabbit
Clonality:	Polyclonal
Conjugate:	This CBR1 antibody is un-conjugated
Application:	Western Blotting (WB)

## Product Details

Immunogen:	Recombinant fusion protein containing a sequence corresponding to amino acids 1-277 of human CBR1 (NP_001748.1).
Sequence:	MSSGIHVALV TGGNKGIGLA IVRDLCLRLFS GDVVL TARDV TRGQAAVQQL QAEGLSPRFH QLDIDDLQSI RALRDFLRKE YGGLDVLVNN AGIAFKVADP TPFHIQAEVT MKTNFFGTRD VCTELLPLIK PQGRVNVSS IMSVRALKSC SPELQQKFRS ETITEELVG LMNKFVEDTK KGVHQKEGWP SSAYGVTKIG VTVLSRIHAR KLSEQRKGDK ILLNACCPGW VRTDMAGPKA TKSPEEGAET PVYLALLPPD AEGPHGQFVS EKRVEQW
Isotype:	IgG
Cross-Reactivity:	Human, Mouse
Characteristics:	Polyclonal Antibodies
Purification:	Affinity purification

## Target Details

---

Target:	CBR1
Alternative Name:	CBR1 ( <a href="#">CBR1 Products</a> )
Background:	<p>The protein encoded by this gene belongs to the short-chain dehydrogenases/reductases (SDR) family, which function as NADPH-dependent oxidoreductases having wide specificity for carbonyl compounds, such as quinones, prostaglandins, and various xenobiotics. Alternatively spliced transcript variants have been found for this</p> <p>gene.,CBR1,CBR,SDR21C1,hCBR1,Cancer,Signal Transduction,Cell Biology &amp; Developmental Biology,Endocrine &amp; Metabolism,CBR1</p>
Molecular Weight:	18 kDa/30 kDa
Gene ID:	873
UniProt:	<a href="#">P16152</a>

## Application Details

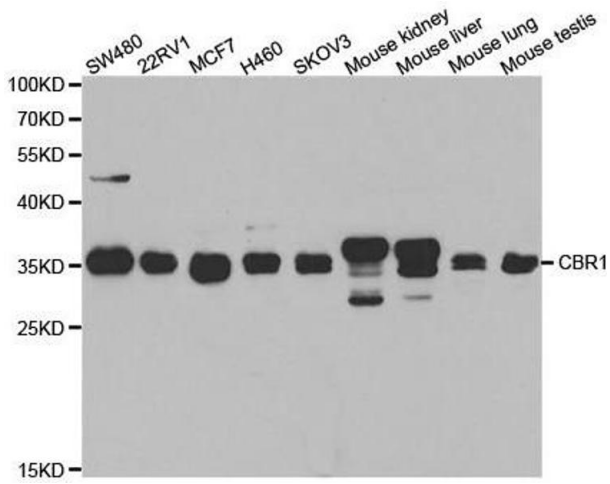
---

Application Notes:	WB,1:500 - 1:2000
Comment:	HIGH QUALITY
Restrictions:	For Research Use only

## Handling

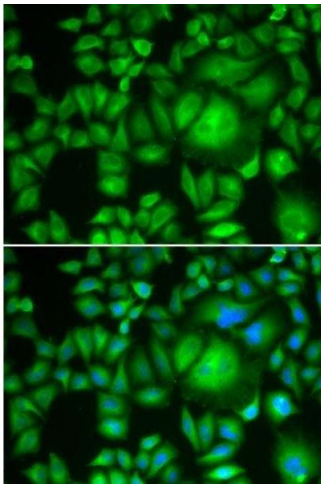
---

Format:	Liquid
Buffer:	PBS with 0.02 % sodium azide,50 % glycerol, pH 7.3.
Preservative:	Sodium azide
Precaution of Use:	This product contains Sodium azide: a POISONOUS AND HAZARDOUS SUBSTANCE which should be handled by trained staff only.
Storage:	-20 °C
Storage Comment:	Store at -20°C. Avoid freeze / thaw cycles.



### Western Blotting

**Image 1.** Western blot analysis of extracts of various cell lines, using CBR1 antibody.



### Immunofluorescence

**Image 2.** Immunofluorescence analysis of A-549 cells using CBR1 antibody.