

Datasheet for ABIN6138030
anti-CCAR1 antibody (AA 1-200)[Go to Product page](#)

2 Images

Overview

Quantity:	100 µL
Target:	CCAR1
Binding Specificity:	AA 1-200
Reactivity:	Human
Host:	Rabbit
Clonality:	Polyclonal
Conjugate:	This CCAR1 antibody is un-conjugated
Application:	Western Blotting (WB), Immunoprecipitation (IP)

Product Details

Immunogen:	Recombinant fusion protein containing a sequence corresponding to amino acids 1-200 of human CCAR1 (NP_060707.2).
Sequence:	MAQFGGQKNP PWATQFTATA VSQPAALGVQ QPSLLGASPT IYTQQTALAA AGLTTQTPAN YQLTQTAALQ QQAAAAAAL QQQYSQPQQA LYSVQQQLQQ PQQTLLTQPA VALPTSLSLS TPQPTAQITV SYTPRSSHQQ QTQPQKQRVF TGVVTKLHDT FGFVDEDVFF QLSAVKGKTP QVGDRVLVEA TYNPNMPFKW
Isotype:	IgG
Cross-Reactivity:	Human, Mouse, Rat
Characteristics:	Polyclonal Antibodies
Purification:	Affinity purification

Target Details

Target:	CCAR1
Alternative Name:	CCAR1 (CCAR1 Products)
Background:	<p>Associates with components of the Mediator and p160 coactivator complexes that play a role as intermediaries transducing regulatory signals from upstream transcriptional activator proteins to basal transcription machinery at the core promoter. Recruited to endogenous nuclear receptor target genes in response to the appropriate hormone. Also functions as a p53 coactivator. May thus play an important role in transcriptional regulation (By similarity. May be involved in apoptosis signaling in the presence of the reinoid CD437. Apoptosis induction involves sequestration of 14-3-3 protein(s and mediated altered expression of multiple cell cycle regulatory genes including MYC, CCNB1 and CDKN1A. Plays a role in cell cycle progression and/or cell proliferation. In association with CALCOCO1 enhances GATA1- and MED1-mediated transcriptional activation from the gamma-globin promoter during erythroid differentiation of K562 erythroleukemia cells. Can act as a both a coactivator and corepressor of AR-mediated transcription. Contributes to chromatin looping and AR transcription complex assembly by stabilizing AR-GATA2 association on chromatin and facilitating MED1 and RNA polymerase II recruitment to AR-binding sites. May play an important role in the growth and tumorigenesis of prostate cancer cells.,CCAR1,Epigenetics & Nuclear Signaling,RNA Binding,Cell Biology & Developmental Biology,Apoptosis,Cell Cycle,Endocrine & Metabolism,CCAR1</p>
Molecular Weight:	131 kDa/132 kDa
Gene ID:	55749
UniProt:	Q8IX12

Application Details

Application Notes:	WB,1:500 - 1:2000,IP,1:50 - 1:100
Restrictions:	For Research Use only

Handling

Format:	Liquid
Buffer:	PBS with 0.02 % sodium azide,50 % glycerol, pH 7.3.
Preservative:	Sodium azide
Precaution of Use:	This product contains Sodium azide: a POISONOUS AND HAZARDOUS SUBSTANCE which

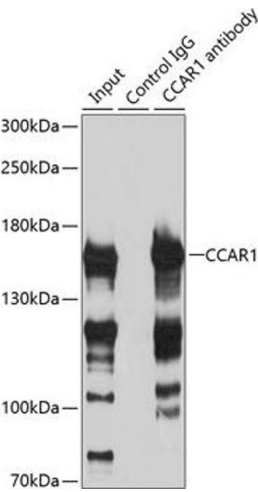
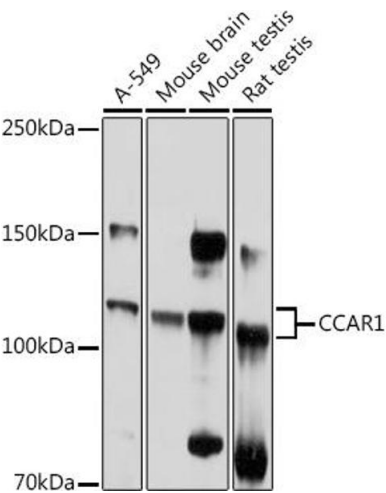
Handling

should be handled by trained staff only.

Storage: -20 °C

Storage Comment: Store at -20°C. Avoid freeze / thaw cycles.

Images



Western Blotting

Image 1. Western blot analysis of extracts of various cell lines, using CC antibody (ABIN6129224, ABIN6138030, ABIN6138032 and ABIN6217655) at 1:1000 dilution. Secondary antibody: HRP Goat Anti-Rabbit IgG (H+L) (ABIN1684268 and ABIN3020597) at 1:10000 dilution. Lysates/proteins: 25 µg per lane. Blocking buffer: 3 % nonfat dry milk in TBST. Detection: ECL Basic Kit (RM00020). Exposure time: 5s.

Immunoprecipitation

Image 2. Immunoprecipitation analysis of 200 µg extracts of HeLa cells using 3 µg CC antibody (ABIN6129224, ABIN6138030, ABIN6138032 and ABIN6217655). Western blot was performed from the immunoprecipitate using CC antibody (ABIN6129224, ABIN6138030, ABIN6138032 and ABIN6217655) at a dilution of 1:500.