

Datasheet for ABIN6138034
anti-CCAR2 antibody (AA 654-923)



[Go to Product page](#)

4 Images

Overview

Quantity:	100 µL
Target:	CCAR2
Binding Specificity:	AA 654-923
Reactivity:	Human
Host:	Rabbit
Clonality:	Polyclonal
Conjugate:	This CCAR2 antibody is un-conjugated
Application:	Western Blotting (WB), Immunohistochemistry (IHC)

Product Details

Immunogen:	Recombinant fusion protein containing a sequence corresponding to amino acids 654-923 of human CCAR2 (NP_066997.3).
Sequence:	LLRDDGEEEF AGAKLEDSEV RSVASNQSEM EFSSLQDMPK ELDPSAVLPL DCLLAFVFFD ANWCGYLHRR DLERILLTLG IRLSAEQAKQ LVSRVVTQNI CQYRSLQYSR QEGLDGGGLPE EVLFGNLDLL PPPGKSTKPG AAPTEHKALV SHNGSLINVG SLLQRAEQQD SGRLYLENKI HTLELKLEES HNRFSATEVT NKTLLAEMQE LRVRLAEAE TARTAERQKS QLQRLLQELR RRLTPLQLEI QRVVEKADSW VEKEEPAPSN
Isotype:	IgG
Cross-Reactivity:	Human, Mouse, Rat
Characteristics:	Polyclonal Antibodies
Purification:	Affinity purification

Target Details

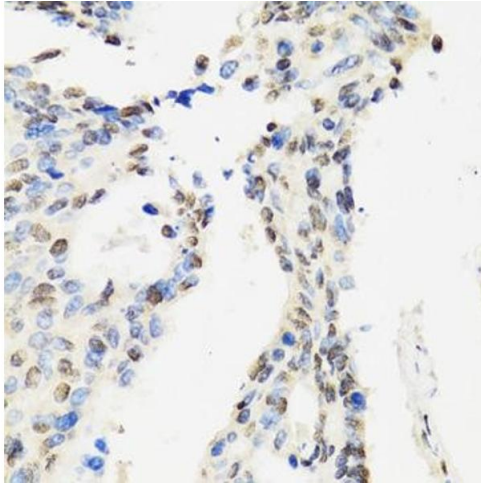
Target:	CCAR2
Alternative Name:	CCAR2 (CCAR2 Products)
Background:	CCAR2,DBC-1,DBC1,KIAA1967,NET35,p30 DBC,p30DBC,Epigenetics & Nuclear Signaling,RNA Binding,Cancer,Tumor suppressors,p53 pathway,Cell Biology & Developmental Biology,Apoptosis,CCAR2
Molecular Weight:	102 kDa/103 kDa
Gene ID:	57805
UniProt:	Q8N163

Application Details

Application Notes:	WB,1:500 - 1:2000,IHC,1:50 - 1:200
Restrictions:	For Research Use only

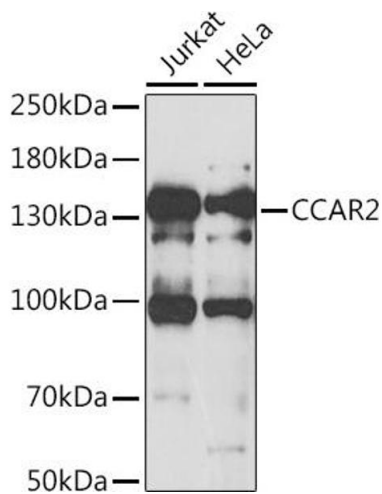
Handling

Format:	Liquid
Buffer:	PBS with 0.02 % sodium azide,50 % glycerol, pH 7.3.
Preservative:	Sodium azide
Precaution of Use:	This product contains Sodium azide: a POISONOUS AND HAZARDOUS SUBSTANCE which should be handled by trained staff only.
Storage:	-20 °C
Storage Comment:	Store at -20°C. Avoid freeze / thaw cycles.



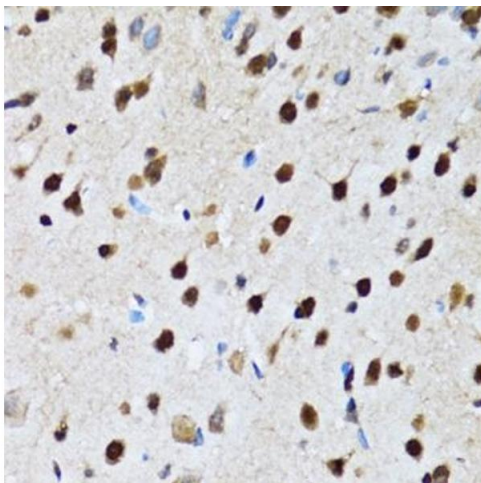
Immunohistochemistry

Image 1. Immunohistochemistry of paraffin-embedded human rectal cancer using CC antibody (ABIN6133528, ABIN6138034, ABIN6138035 and ABIN6222941) at dilution of 1:100 (40x lens). Perform microwave antigen retrieval with 10 mM PBS buffer pH 7.2 before commencing with IHC staining protocol.



Western Blotting

Image 2. Western blot analysis of extracts of various cell lines, using CC antibody (ABIN6133528, ABIN6138034, ABIN6138035 and ABIN6222941) at 1:1000 dilution. Secondary antibody: HRP Goat Anti-Rabbit IgG (H+L) (ABIN1684268 and ABIN3020597) at 1:10000 dilution. Lysates/proteins: 25 µg per lane. Blocking buffer: 3 % nonfat dry milk in TBST. Detection: ECL Basic Kit (RM00020). Exposure time: 30s.



Immunohistochemistry

Image 3. Immunohistochemistry of paraffin-embedded rat brain using CC antibody (ABIN6133528, ABIN6138034, ABIN6138035 and ABIN6222941) at dilution of 1:100 (40x lens). Perform microwave antigen retrieval with 10 mM PBS buffer pH 7.2 before commencing with IHC staining protocol.

Please check the [product details page](#) for more images. Overall 4 images are available for ABIN6138034.