



[Go to Product page](#)

Datasheet for ABIN6138042
anti-CCDC61 antibody (AA 352-531)

1 Image

Overview

Quantity:	100 µL
Target:	CCDC61
Binding Specificity:	AA 352-531
Reactivity:	Human
Host:	Rabbit
Clonality:	Polyclonal
Conjugate:	This CCDC61 antibody is un-conjugated
Application:	Western Blotting (WB)

Product Details

Immunogen:	Recombinant fusion protein containing a sequence corresponding to amino acids 352-531 of human CCDC61 (NP_001073871.1).
Sequence:	PSPSPTGGRA LRFDPTAFVK AKERKQREIQ MKQQQRNRLG SGGSGDGPVSWSRQTQPPA ALTGRGDAPN RSRNRSSVD SFRSRCSSAS SCSDLDFSE SLSRGGHRRR GKPPSPTPWS GSNMKSPPE RSHHQKSLAN SGGWVPIKEY SSEHQAADMA EIDARLKALQ EYMNRLDMRS
Isotype:	IgG
Cross-Reactivity:	Human, Mouse
Characteristics:	Polyclonal Antibodies
Purification:	Affinity purification

Target Details

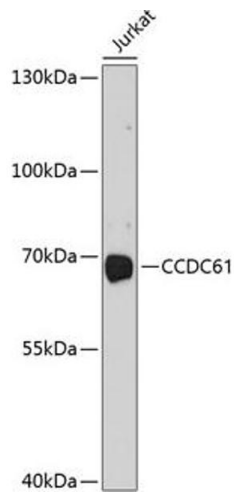
Target:	CCDC61
Alternative Name:	CCDC61 (CCDC61 Products)
Background:	Microtubule-binding centrosomal protein required for centriole cohesion, independently of the centrosome-associated protein/CEP250 and rootletin/CROCC linker. In interphase, required for anchoring microtubule at the mother centriole subdistal appendages and for centrosome positioning. During mitosis, may be involved in spindle assembly and chromatin alignment by regulating the organization of spindle microtubules into a symmetrical structure. Has been proposed to play a role in CEP170 recruitment to centrosomes. However, this function could not be confirmed. Plays a non-essential role in ciliogenesis.,CCDC61,Epigenetics & Nuclear Signaling,Cell Biology & Developmental Biology,Cell Cycle,Centrosome,CCDC61
Molecular Weight:	37 kDa/57 kDa
Gene ID:	729440
UniProt:	Q9Y6R9

Application Details

Application Notes:	WB,1:500 - 1:2000
Restrictions:	For Research Use only

Handling

Format:	Liquid
Buffer:	PBS with 0.02 % sodium azide,50 % glycerol, pH 7.3.
Preservative:	Sodium azide
Precaution of Use:	This product contains Sodium azide: a POISONOUS AND HAZARDOUS SUBSTANCE which should be handled by trained staff only.
Storage:	-20 °C
Storage Comment:	Store at -20°C. Avoid freeze / thaw cycles.



Western Blotting

Image 1. Western blot analysis of extracts of Jurkat cells, using CCDC61 antibody (ABIN6133303, ABIN6138042, ABIN6138043 and ABIN6214563) at 1:1000 dilution. Secondary antibody: HRP Goat Anti-Rabbit IgG (H+L) (ABIN1684268 and ABIN3020597) at 1:10000 dilution. Lysates/proteins: 25 μ g per lane. Blocking buffer: 3 % nonfat dry milk in TBST. Detection: ECL Basic Kit (RM00020). Exposure time: 90s.