



[Go to Product page](#)

Datasheet for ABIN6138063  
**anti-CCL5 antibody (AA 24-91)**

3 Images

Overview

Quantity:	100 µL
Target:	CCL5
Binding Specificity:	AA 24-91
Reactivity:	Human
Host:	Rabbit
Clonality:	Polyclonal
Conjugate:	This CCL5 antibody is un-conjugated
Application:	Western Blotting (WB), Immunofluorescence (IF)

Product Details

Immunogen:	Recombinant fusion protein containing a sequence corresponding to amino acids 24-91 of human CCL5/RANTES (NP_002976.2).
Sequence:	SPYSSDTTPC CFAYIARPLP RAHIKEYFYT SGKCSNPAVV FVTRKNRQVC ANPEKKWVRE YINSLEMS
Isotype:	IgG
Cross-Reactivity:	Human, Mouse, Rat
Characteristics:	Polyclonal Antibodies
Purification:	Affinity purification

## Target Details

---

Target: CCL5

Alternative Name: CCL5 ([CCL5 Products](#))

Background: This gene is one of several chemokine genes clustered on the q-arm of chromosome 17. Chemokines form a superfamily of secreted proteins involved in immunoregulatory and inflammatory processes. The superfamily is divided into four subfamilies based on the arrangement of the N-terminal cysteine residues of the mature peptide. This chemokine, a member of the CC subfamily, functions as a chemoattractant for blood monocytes, memory T helper cells and eosinophils. It causes the release of histamine from basophils and activates eosinophils. This cytokine is one of the major HIV-suppressive factors produced by CD8+ cells. It functions as one of the natural ligands for the chemokine receptor chemokine (C-C motif) receptor 5 (CCR5), and it suppresses in vitro replication of the R5 strains of HIV-1, which use CCR5 as a coreceptor. Alternative splicing results in multiple transcript variants that encode different isoforms.,CCL5,D17S136E,RANTES,SCYA5,SIS-delta,SISd,TCP228,eoCP,Immunology & Inflammation,Cytokines,Cell Intrinsic Innate Immunity Signaling Pathway,Chemokines,Chemokine,Neuroscience,Neurodegenerative Diseases,Cardiovascular,CCL5

Molecular Weight: 9 kDa

Gene ID: 6352

UniProt: [P13501](#)

Pathways: [Cellular Response to Molecule of Bacterial Origin](#), [Regulation of G-Protein Coupled Receptor Protein Signaling](#), [Smooth Muscle Cell Migration](#)

## Application Details

---

Application Notes: WB,1:500 - 1:2000,IF,1:50 - 1:200

Restrictions: For Research Use only

## Handling

---

Format: Liquid

Buffer: PBS with 0.02 % sodium azide,50 % glycerol, pH 7.3.

Preservative: Sodium azide

Precaution of Use: This product contains Sodium azide: a POISONOUS AND HAZARDOUS SUBSTANCE which

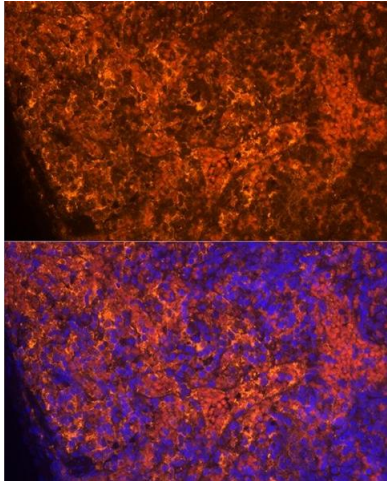
## Handling

should be handled by trained staff only.

Storage: -20 °C

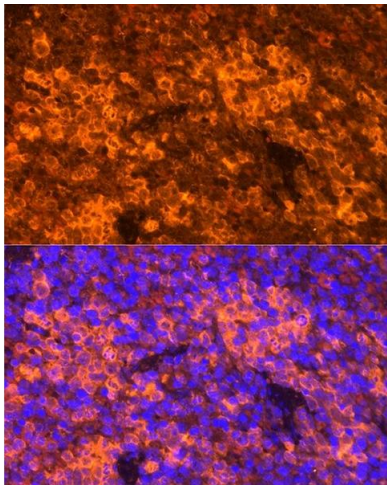
Storage Comment: Store at -20°C. Avoid freeze / thaw cycles.

## Images



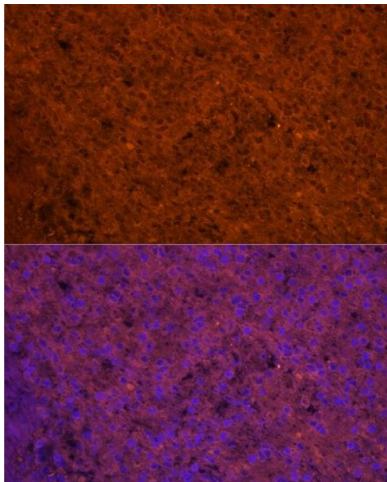
### Immunofluorescence

**Image 1.** Immunofluorescence analysis of Rat spleen using CCL5/RANTES antibody (ABIN6129369, ABIN6138063, ABIN6138065 and ABIN6218473) at dilution of 1:100. Blue: DAPI for nuclear staining.



### Immunofluorescence

**Image 2.** Immunofluorescence analysis of Mouse spleen using CCL5/RANTES antibody (ABIN6129369, ABIN6138063, ABIN6138065 and ABIN6218473) at dilution of 1:100. Blue: DAPI for nuclear staining.



### Immunofluorescence

**Image 3.** Immunofluorescence analysis of Human spleen using CCL5/RANTES antibody (ABIN6129369, ABIN6138063, ABIN6138065 and ABIN6218473) at dilution of 1:100. Blue: DAPI for nuclear staining.