

Datasheet for ABIN6138071
anti-Cyclin A1 antibody (AA 1-230)

2 Images

[Go to Product page](#)

Overview

Quantity:	100 µL
Target:	Cyclin A1 (CCNA1)
Binding Specificity:	AA 1-230
Reactivity:	Human
Host:	Rabbit
Clonality:	Polyclonal
Conjugate:	This Cyclin A1 antibody is un-conjugated
Application:	Western Blotting (WB)

Product Details

Immunogen:	Recombinant fusion protein containing a sequence corresponding to amino acids 1-230 of human CCNA1 (NP_001104515.1).
Sequence:	METGFPAIMY PGSFIGGWGE EYLSWEGPGL PDFVFQQPVE SEAMHCSNPK SGVVLATVAR GPDACQILTR APLGQDPPQR TVLGLLTANG QYRRTCGQGI TRIRCYSGSE NAFPPAGKKA LPDCGVQEPP KQGFDIYMDE LEQGDRDSCS VREGMAFEDV YEVDGTGLKS DLHFLLDFNT VSPMLVDSSL LSQSEDISSL GTDVINVTEY AEEIYQYLRE AEIRHRPKAH
Isotype:	IgG
Cross-Reactivity:	Human, Rat
Characteristics:	Polyclonal Antibodies
Purification:	Affinity purification

Target Details

Target:	Cyclin A1 (CCNA1)
Alternative Name:	CCNA1 (CCNA1 Products)
Background:	<p>The protein encoded by this gene belongs to the highly conserved cyclin family, whose members are characterized by a dramatic periodicity in protein abundance through the cell cycle. Cyclins function as regulators of CDK kinases. Different cyclins exhibit distinct expression and degradation patterns which contribute to the temporal coordination of each mitotic event. The cyclin encoded by this gene was shown to be expressed in testis and brain, as well as in several leukemic cell lines, and is thought to primarily function in the control of the germline meiotic cell cycle. This cyclin binds both CDK2 and CDC2 kinases, which give two distinct kinase activities, one appearing in S phase, the other in G2, and thus regulate separate functions in cell cycle. This cyclin was found to bind to important cell cycle regulators, such as Rb family proteins, transcription factor E2F-1, and the p21 family proteins. Multiple transcript variants encoding different isoforms have been found for this gene.,CCNA1,CT146,cyclin-A1,Epigenetics & Nuclear Signaling,Cancer,Cell Biology & Developmental Biology,Cell Cycle,Centrosome,Cyclins,Endocrine & Metabolism,AMPK Signaling Pathway,CCNA1</p>
Molecular Weight:	47 kDa/52 kDa
Gene ID:	8900
UniProt:	P78396
Pathways:	Apoptosis , Cell Division Cycle , AMPK Signaling , Mitotic G1-G1/S Phases , DNA Replication , M Phase , Synthesis of DNA

Application Details

Application Notes:	WB,1:500 - 1:2000
Restrictions:	For Research Use only

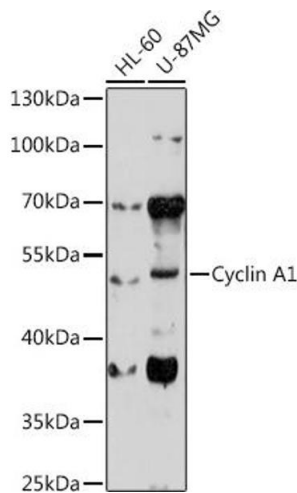
Handling

Format:	Liquid
Buffer:	PBS with 0.02 % sodium azide,50 % glycerol, pH 7.3.
Preservative:	Sodium azide
Precaution of Use:	This product contains Sodium azide: a POISONOUS AND HAZARDOUS SUBSTANCE which should be handled by trained staff only.

Handling

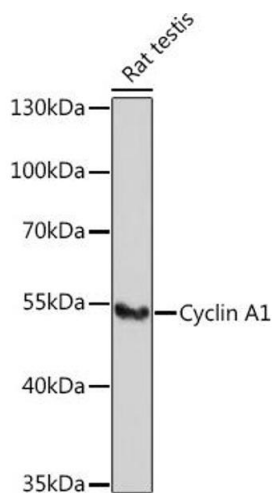
Storage:	-20 °C
Storage Comment:	Store at -20°C. Avoid freeze / thaw cycles.

Images



Western Blotting

Image 1. Western blot analysis of extracts of various cell lines, using Cyclin antibody (ABIN6127726, ABIN6138071, ABIN6138072 and ABIN6221269) at 1:1000 dilution. Secondary antibody: HRP Goat Anti-Rabbit IgG (H+L) (ABIN1684268 and ABIN3020597) at 1:10000 dilution. Lysates/proteins: 25 µg per lane. Blocking buffer: 3 % nonfat dry milk in TBST. Detection: ECL Basic Kit (RM00020). Exposure time: 3 min.



Western Blotting

Image 2. Western blot analysis of extracts of Rat testis, using Cyclin antibody (ABIN6127726, ABIN6138071, ABIN6138072 and ABIN6221269) at 1:1000 dilution. Secondary antibody: HRP Goat Anti-Rabbit IgG (H+L) (ABIN1684268 and ABIN3020597) at 1:10000 dilution. Lysates/proteins: 25 µg per lane. Blocking buffer: 3 % nonfat dry milk in TBST. Detection: ECL Basic Kit (RM00020). Exposure time: 3 min.