

Datasheet for ABIN6138087

anti-Cyclin D3 antibody (AA 201-292)**2** Images[Go to Product page](#)

Overview

Quantity:	100 µL
Target:	Cyclin D3 (CCND3)
Binding Specificity:	AA 201-292
Reactivity:	Human
Host:	Rabbit
Clonality:	Polyclonal
Conjugate:	This Cyclin D3 antibody is un-conjugated
Application:	Western Blotting (WB)

Product Details

Immunogen:	Recombinant fusion protein containing a sequence corresponding to amino acids 201-292 of human Cyclin D3 (NP_001751.1).
Sequence:	SMIATGSIGA AVQGLGACSM SGDELTELLA GITGTEVDCL RACQEQIEAA LRESLREASQ TSSSPAPKAP RGSSSQGPSQ TSTPTDVTAI HL
Isotype:	IgG
Cross-Reactivity:	Human, Mouse
Characteristics:	Polyclonal Antibodies
Purification:	Affinity purification

Target Details

Target:	Cyclin D3 (CCND3)
Alternative Name:	CCND3 (CCND3 Products)
Background:	<p>The protein encoded by this gene belongs to the highly conserved cyclin family, whose members are characterized by a dramatic periodicity in protein abundance through the cell cycle. Cyclins function as regulators of CDK kinases. Different cyclins exhibit distinct expression and degradation patterns which contribute to the temporal coordination of each mitotic event. This cyclin forms a complex with and functions as a regulatory subunit of CDK4 or CDK6, whose activity is required for cell cycle G1/S transition. This protein has been shown to interact with and be involved in the phosphorylation of tumor suppressor protein Rb. The CDK4 activity associated with this cyclin was reported to be necessary for cell cycle progression through G2 phase into mitosis after UV radiation. Several transcript variants encoding different isoforms have been found for this gene.,CCND3,cyclin D3,Cyclin D3,Epigenetics & Nuclear Signaling,Cancer,Cell Biology & Developmental Biology,Cell Cycle,Cyclins,G1/S Checkpoint,Hedgehog Signaling Pathway,CCND3</p>
Molecular Weight:	9 kDa/22 kDa/24 kDa/32 kDa
Gene ID:	896
UniProt:	P30281
Pathways:	Cell Division Cycle , Mitotic G1-G1/S Phases , Glycosaminoglycan Metabolic Process

Application Details

Application Notes:	WB,1:500 - 1:2000
Comment:	HIGH QUALITY
Restrictions:	For Research Use only

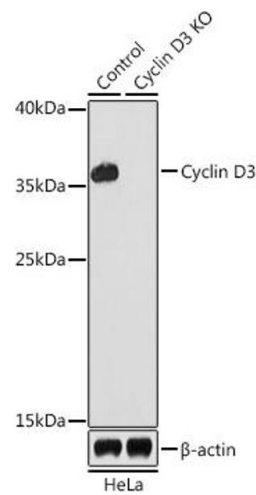
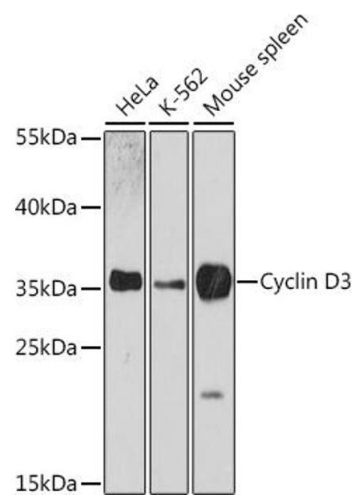
Handling

Format:	Liquid
Buffer:	PBS with 0.02 % sodium azide,50 % glycerol, pH 7.3.
Preservative:	Sodium azide
Precaution of Use:	This product contains Sodium azide: a POISONOUS AND HAZARDOUS SUBSTANCE which should be handled by trained staff only.
Storage:	-20 °C

Handling

Storage Comment: Store at -20°C. Avoid freeze / thaw cycles.

Images



Western Blotting

Image 1. Western blot analysis of extracts of various cell lines, using Cyclin D3 antibody (ABIN6127731, ABIN6138087, ABIN6138088 and ABIN7101345) at 1:3000 dilution. Secondary antibody: HRP Goat Anti-Rabbit IgG (H+L) (ABIN1684268 and ABIN3020597) at 1:10000 dilution. Lysates/proteins: 25 µg per lane. Blocking buffer: 3 % nonfat dry milk in TBST. Detection: ECL Basic Kit (RM00020). Exposure time: 90s.

Western Blotting

Image 2. Western blot analysis of extracts from normal (control) and Cyclin D3 knockout (KO) HeLa cells, using Cyclin D3 antibody (ABIN6127731, ABIN6138087, ABIN6138088 and ABIN7101345) at 1:1000 dilution. Secondary antibody: HRP Goat Anti-Rabbit IgG (H+L) (ABIN1684268 and ABIN3020597) at 1:10000 dilution. Lysates/proteins: 25 µg per lane. Blocking buffer: 3 % nonfat dry milk in TBST. Detection: ECL Basic Kit (RM00020). Exposure time: 90s.