

Datasheet for ABIN6138095
anti-Cyclin G1 antibody (C-Term)

3 Images

[Go to Product page](#)

Overview

Quantity:	100 µL
Target:	Cyclin G1 (CCNG1)
Binding Specificity:	C-Term
Reactivity:	Human
Host:	Rabbit
Clonality:	Polyclonal
Conjugate:	This Cyclin G1 antibody is un-conjugated
Application:	Western Blotting (WB), Immunohistochemistry (IHC)

Product Details

Immunogen:	A synthetic peptide corresponding to a sequence within amino acids 200 to the C-terminus of human Cyclin G1 (NP_004051.1).
Sequence:	PSVLALSIIA LEIQAKCQE LTEGIECLQK HSKINGRDLT FWQELVSKCL TEYSSNKCSK PNVQKLKWIV SGRTARQLKH SYRITHLPT IPENV
Isotype:	IgG
Cross-Reactivity:	Human, Mouse, Rat
Characteristics:	Polyclonal Antibodies
Purification:	Affinity purification

Target Details

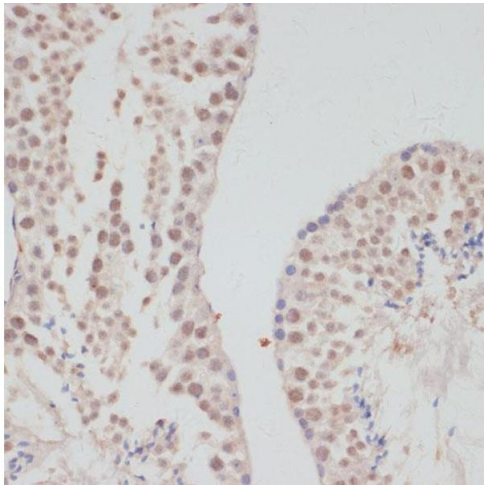
Target:	Cyclin G1 (CCNG1)
Alternative Name:	CCNG1 (CCNG1 Products)
Background:	The eukaryotic cell cycle is governed by cyclin-dependent protein kinases (CDKs) whose activities are regulated by cyclins and CDK inhibitors. The protein encoded by this gene is a member of the cyclin family and contains the cyclin box. The encoded protein lacks the protein destabilizing (PEST) sequence that is present in other family members. Transcriptional activation of this gene can be induced by tumor protein p53. Two transcript variants encoding the same protein have been identified for this gene.,CCNG1,CCNG,cyclin-G1,Epigenetics & Nuclear Signaling,Cell Biology & Developmental Biology,Cell Cycle,Cyclins,CCNG1
Molecular Weight:	18 kDa/34 kDa
Gene ID:	900
UniProt:	P51959
Pathways:	p53 Signaling

Application Details

Application Notes:	WB,1:500 - 1:1000,IHC,1:50 - 1:200
Restrictions:	For Research Use only

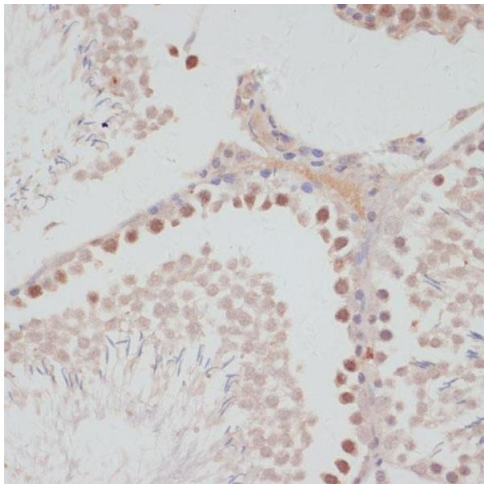
Handling

Format:	Liquid
Buffer:	PBS with 0.02 % sodium azide,50 % glycerol, pH 7.3.
Preservative:	Sodium azide
Precaution of Use:	This product contains Sodium azide: a POISONOUS AND HAZARDOUS SUBSTANCE which should be handled by trained staff only.
Storage:	-20 °C
Storage Comment:	Store at -20°C. Avoid freeze / thaw cycles.



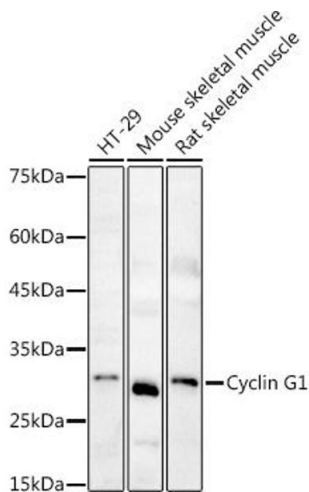
Immunohistochemistry

Image 1. Immunohistochemistry of paraffin-embedded mouse testis using Cyclin G1 antibody (ABIN6127734, ABIN6138095, ABIN6138096 and ABIN6220906) at dilution of 1:100 (40x lens). Perform microwave antigen retrieval with 10 mM PBS buffer pH 7.2 before commencing with IHC staining protocol.



Immunohistochemistry

Image 2. Immunohistochemistry of paraffin-embedded rat testis using Cyclin G1 antibody (ABIN6127734, ABIN6138095, ABIN6138096 and ABIN6220906) at dilution of 1:100 (40x lens). Perform microwave antigen retrieval with 10 mM PBS buffer pH 7.2 before commencing with IHC staining protocol.



Western Blotting

Image 3. Western blot analysis of extracts of various cell lines, using Cyclin G1 antibody (ABIN6127734, ABIN6138095, ABIN6138096 and ABIN6220906) at 1:1000 dilution. Secondary antibody: HRP Goat Anti-Rabbit IgG (H+L) (ABIN1684268 and ABIN3020597) at 1:10000 dilution. Lysates/proteins: 25 µg per lane. Blocking buffer: 3 % nonfat dry milk in TBST. Detection: ECL Basic Kit (RM00020). Exposure time: 180s.