

Datasheet for ABIN6138101
anti-CCR8 antibody (AA 296-355)[Go to Product page](#)

1 Image

Overview

Quantity:	100 µL
Target:	CCR8
Binding Specificity:	AA 296-355
Reactivity:	Human
Host:	Rabbit
Clonality:	Polyclonal
Conjugate:	This CCR8 antibody is un-conjugated
Application:	Western Blotting (WB)

Product Details

Immunogen:	Recombinant fusion protein containing a sequence corresponding to amino acids 296-355 of human CCR8 (NP_005192.1).
Sequence:	NPVIYAFVGE KFKKHLSEIF QKSCSQIFNY LGRQMPRESC EKSSSCQQHS SRSSSVDYIL
Isotype:	IgG
Cross-Reactivity:	Mouse, Rat
Characteristics:	Polyclonal Antibodies
Purification:	Affinity purification

Target Details

Target:	CCR8
---------	------

Target Details

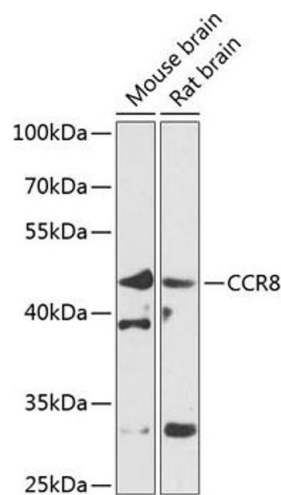
Alternative Name:	CCR8 (CCR8 Products)
Background:	<p>This gene encodes a member of the beta chemokine receptor family, which is predicted to be a seven transmembrane protein similar to G protein-coupled receptors. Chemokines and their receptors are important for the migration of various cell types into the inflammatory sites. This receptor protein preferentially expresses in the thymus. I-309, thymus activation-regulated cytokine (TARC) and macrophage inflammatory protein-1 beta (MIP-1 beta) have been identified as ligands of this receptor. Studies of this receptor and its ligands suggested its role in regulation of monocyte chemotaxis and thymic cell apoptosis. More specifically, this receptor may contribute to the proper positioning of activated T cells within the antigenic challenge sites and specialized areas of lymphoid tissues. This gene is located at the chemokine receptor gene cluster region.,CCR8,CC-CKR-8,CCR-8,CDw198,CKRL1,CMKBR8,CMKBRL2,CY6,GPRCY6,TER1,Signal Transduction,G protein signaling,G-Protein-Coupled Receptors(GPCR),Immunology & Inflammation,CD markers,Cell Intrinsic Innate Immunity Signaling Pathway,Chemokines,Chemokine,CCR8</p>
Molecular Weight:	31 kDa/40 kDa
Gene ID:	1237
UniProt:	P51685

Application Details

Application Notes:	WB,1:500 - 1:2000
Comment:	HIGH QUALITY
Restrictions:	For Research Use only

Handling

Format:	Liquid
Buffer:	PBS with 0.02 % sodium azide,50 % glycerol, pH 7.3.
Preservative:	Sodium azide
Precaution of Use:	This product contains Sodium azide: a POISONOUS AND HAZARDOUS SUBSTANCE which should be handled by trained staff only.
Storage:	-20 °C
Storage Comment:	Store at -20°C. Avoid freeze / thaw cycles.



Western Blotting

Image 1. Western blot analysis of extracts of various cell lines, using CCR8 antibody (ABIN6130010, ABIN6138101, ABIN6138102 and ABIN6224067) at 1:1000 dilution. Secondary antibody: HRP Goat Anti-Rabbit IgG (H+L) (ABIN1684268 and ABIN3020597) at 1:10000 dilution. Lysates/proteins: 25 µg per lane. Blocking buffer: 3 % nonfat dry milk in TBST. Detection: ECL Basic Kit (RM00020). Exposure time: 90s.