

Datasheet for ABIN6138103

anti-Superoxide dismutase copper chaperone antibody (AA 1-274)



[Go to Product page](#)

1 Image

Overview

| | |
|----------------------|--|
| Quantity: | 100 µL |
| Target: | Superoxide dismutase copper chaperone (CCS) |
| Binding Specificity: | AA 1-274 |
| Reactivity: | Human |
| Host: | Rabbit |
| Clonality: | Polyclonal |
| Conjugate: | This Superoxide dismutase copper chaperone antibody is un-conjugated |
| Application: | Western Blotting (WB) |

Product Details

| | |
|-------------------|--|
| Immunogen: | Recombinant fusion protein containing a sequence corresponding to amino acids 1-274 of human CCS (NP_005116.1). |
| Sequence: | MASDSGNQGT LCTLEFAVQM TCQSCVDAVR KSLQGVAGVQ DVEVHLEDQM VLVHTTLPSQ EVQALLEGTG RQAVLKGMGS GQLQNLGAAV AILGGPGTVQ GVVRFLQLTP ERCLIEGTID GLEPGLHGLH VHQYGDLTNN CNSCGNHFNPDGASHGGPQD SDRHRGDLGN VRADADGRAI FRMEDEQLKV WDVIGRSLII DEGEDDLGRG GHPLSKITGN SGERLACGII ARSAGLFQNP KQICSCDGLT IWEERGRPIA GKGRKESAQP PAHL |
| Isotype: | IgG |
| Cross-Reactivity: | Human |
| Characteristics: | Polyclonal Antibodies |
| Purification: | Affinity purification |

Target Details

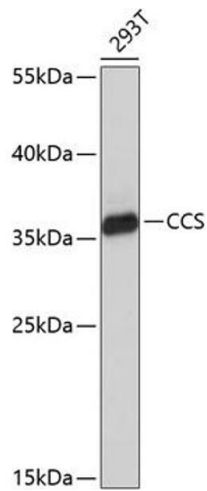
| | |
|-------------------|---|
| Target: | Superoxide dismutase copper chaperone (CCS) |
| Alternative Name: | CCS (CCS Products) |
| Background: | Copper chaperone for superoxide dismutase specifically delivers Cu to copper/zinc superoxide dismutase and may activate copper/zinc superoxide dismutase through direct insertion of the Cu cofactor.,CCS,Cancer,Signal Transduction,Cell Biology & Developmental Biology,Endocrine & Metabolism,Mitochondrial metabolism,Mitochondrial markers,Neuroscience,Neurodegenerative Diseases,CCS |
| Molecular Weight: | 29 kDa |
| Gene ID: | 9973 |
| UniProt: | O14618 |
| Pathways: | Transition Metal Ion Homeostasis |

Application Details

| | |
|--------------------|-----------------------|
| Application Notes: | WB,1:500 - 1:2000 |
| Restrictions: | For Research Use only |

Handling

| | |
|--------------------|--|
| Format: | Liquid |
| Buffer: | PBS with 0.02 % sodium azide,50 % glycerol, pH 7.3. |
| Preservative: | Sodium azide |
| Precaution of Use: | This product contains Sodium azide: a POISONOUS AND HAZARDOUS SUBSTANCE which should be handled by trained staff only. |
| Storage: | -20 °C |
| Storage Comment: | Store at -20°C. Avoid freeze / thaw cycles. |



Western Blotting

Image 1. Western blot analysis of extracts of 293T cells, using CCS antibody (ABIN6127721, ABIN6138103, ABIN6222550 and ABIN6222551) at 1:1000 dilution. Secondary antibody: HRP Goat Anti-Rabbit IgG (H+L) (ABIN1684268 and ABIN3020597) at 1:10000 dilution. Lysates/proteins: 25 µg per lane. Blocking buffer: 3 % nonfat dry milk in TBST. Detection: ECL Basic Kit (RM00020). Exposure time: 30s.