



[Go to Product page](#)

Datasheet for ABIN6138163
anti-IREM1 antibody (AA 23-150)

1 Image

Overview

Quantity:	100 µL
Target:	IREM1
Binding Specificity:	AA 23-150
Reactivity:	Human
Host:	Rabbit
Clonality:	Polyclonal
Conjugate:	This IREM1 antibody is un-conjugated
Application:	Western Blotting (WB)

Product Details

Immunogen:	Recombinant fusion protein containing a sequence corresponding to amino acids 23-150 of human CD300LF (NP_001276011.1).
Sequence:	TQITGPTTVN GLERGLTVQ CVYRSGWETY LKWWCRGAIW RDCKILVKTS GSEQEVKRDR VSIKDNQKNR TFTVTMEDLM KTDADTYWCG IEKTGNDLGV TVQVTIDPAP VTQEETSSSP TLTGHHL D
Isotype:	IgG
Cross-Reactivity:	Human, Mouse, Rat
Characteristics:	Polyclonal Antibodies
Purification:	Affinity purification

Target Details

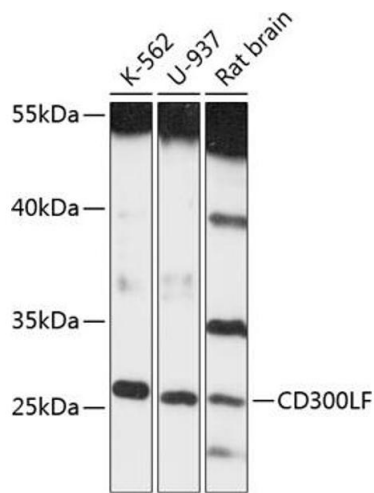
Target:	IREM1
Alternative Name:	CD300LF (IREM1 Products)
Background:	This gene encodes a member of the CD300 protein family. Members of this family are cell surface glycoproteins with a single IgV-like extracellular domain, and are involved in the regulation of immune response. The encoded protein is an inhibitory receptor. Alternative splicing results in multiple transcript variants.,CD300LF,CD300f,CLM-1,CLM1,IREM-1,IREM1,IgSF13,LMIR3,NKIR,Immunology & Inflammation,CD markers,CD300LF
Molecular Weight:	18 kDa/21 kDa/26 kDa/32 kDa
Gene ID:	146722
UniProt:	Q8TDQ1

Application Details

Application Notes:	WB,1:500 - 1:2000
Restrictions:	For Research Use only

Handling

Format:	Liquid
Buffer:	PBS with 0.02 % sodium azide,50 % glycerol, pH 7.3.
Preservative:	Sodium azide
Precaution of Use:	This product contains Sodium azide: a POISONOUS AND HAZARDOUS SUBSTANCE which should be handled by trained staff only.
Storage:	-20 °C
Storage Comment:	Store at -20°C. Avoid freeze / thaw cycles.



Western Blotting

Image 1. Western blot analysis of extracts of various cell lines, using CD300LF antibody (ABIN6131969, ABIN6138163, ABIN6138165 and ABIN6217961) at 1:3000 dilution. Secondary antibody: HRP Goat Anti-Rabbit IgG (H+L) (ABIN1684268 and ABIN3020597) at 1:10000 dilution. Lysates/proteins: 25 µg per lane. Blocking buffer: 3 % nonfat dry milk in TBST. Detection: ECL Basic Kit (RM00020). Exposure time: 90s.