

Datasheet for ABIN6138179

**anti-AGR2 antibody**

5 Images

[Go to Product page](#)

## Overview

Quantity:	100 µL
Target:	AGR2
Reactivity:	Human
Host:	Rabbit
Clonality:	Monoclonal
Conjugate:	This AGR2 antibody is un-conjugated
Application:	Western Blotting (WB), Immunofluorescence (IF)

## Product Details

Immunogen:	A synthesized peptide derived from human AGR2
Isotype:	IgG
Cross-Reactivity:	Human, Mouse, Rat
Characteristics:	Monoclonal Antibodies
Purification:	Affinity purification

## Target Details

Target:	AGR2
Alternative Name:	AGR2 ( <a href="#">AGR2 Products</a> )
Background:	This gene encodes a member of the disulfide isomerase (PDI) family of endoplasmic reticulum (ER) proteins that catalyze protein folding and thiol-disulfide interchange reactions. The

## Target Details

encoded protein has an N-terminal ER-signal sequence, a catalytically active thioredoxin domain, and a C-terminal ER-retention sequence. This protein plays a role in cell migration, cellular transformation and metastasis and is as a p53 inhibitor. As an ER-localized molecular chaperone, it plays a role in the folding, trafficking, and assembly of cysteine-rich transmembrane receptors and the cysteine-rich intestinal glycoprotein mucin. This gene has been implicated in inflammatory bowel disease and cancer progression. [provided by RefSeq, Mar 2017],AG-2, AG2, GOB-4, HAG-2, HEL-S-116, HPC8, PDIA17, XAG-2,Cancer,Cell Biology & Developmental Biology,Stem Cells,Tumor biomarkers,AGR2

Molecular Weight: 17 kDa

Gene ID: 10551

UniProt: [O95994](#)

## Application Details

Application Notes: WB,1:500 - 1:2000, IF,1:50 - 1:200

Comment: HIGH QUALITY

Restrictions: For Research Use only

## Handling

Format: Liquid

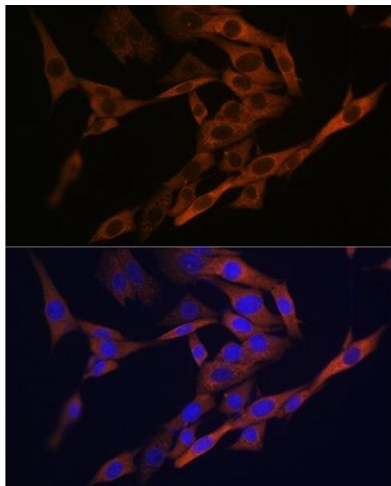
Buffer: PBS with 0.02 % sodium azide,0.05 % BSA,50 % glycerol, pH 7.3.

Preservative: Sodium azide

Precaution of Use: This product contains Sodium azide: a POISONOUS AND HAZARDOUS SUBSTANCE which should be handled by trained staff only.

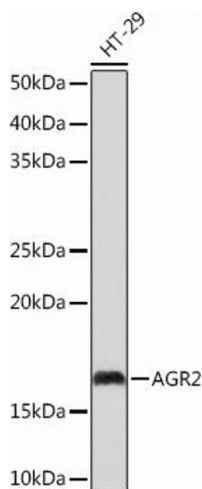
Storage: -20 °C

Storage Comment: Store at -20°C. Avoid freeze / thaw cycles.



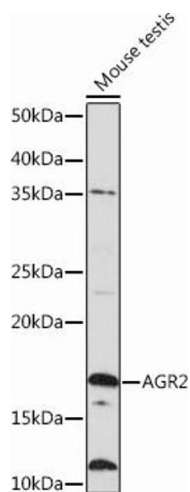
### Immunofluorescence

**Image 1.** Immunofluorescence analysis of C6 cells using Rabbit mAb (ABIN6134271, ABIN6138179, ABIN6138182 and ABIN7101399) at dilution of 1:100 (40x lens). Blue: DAPI for nuclear staining.



### Western Blotting

**Image 2.** Western blot analysis of extracts of HT-29 cells, using Rabbit mAb (ABIN6134271, ABIN6138179, ABIN6138182 and ABIN7101399) at 1:1000 dilution. Secondary antibody: HRP Goat Anti-Rabbit IgG (H+L) (ABIN1684268 and ABIN3020597) at 1:10000 dilution. Lysates/proteins: 25 µg per lane. Blocking buffer: 3 % nonfat dry milk in TBST. Detection: ECL Basic Kit (RM00020). Exposure time: 10s.



### Western Blotting

**Image 3.** Western blot analysis of extracts of Mouse testis, using Rabbit mAb (ABIN6134271, ABIN6138179, ABIN6138182 and ABIN7101399) at 1:1000 dilution. Secondary antibody: HRP Goat Anti-Rabbit IgG (H+L) (ABIN1684268 and ABIN3020597) at 1:10000 dilution. Lysates/proteins: 25 µg per lane. Blocking buffer: 3 % nonfat dry milk in TBST. Detection: ECL Basic Kit (RM00020). Exposure time: 3 min.

Please check the [product details page](#) for more images. Overall 5 images are available for ABIN6138179.