

Datasheet for ABIN6138218
anti-CD68 antibody (AA 22-319)



[Go to Product page](#)

4 Images

Overview

Quantity:	100 µL
Target:	CD68
Binding Specificity:	AA 22-319
Reactivity:	Human
Host:	Rabbit
Clonality:	Polyclonal
Conjugate:	This CD68 antibody is un-conjugated
Application:	Immunofluorescence (IF), Western Blotting (WB), Immunohistochemistry (IHC)

Product Details

Immunogen:	Recombinant fusion protein containing a sequence corresponding to amino acids 22-319 of human CD68 (NP_001242.2).
Sequence:	NDCPHKKSAT LLPSFTVTPT VTESTGTTSH RTTKSHKTTT HRTTTTGTTS HGPTTATHNP TTTSHGNVTV HPTSNSSTATS QGPSTATHSP ATTSHGNAVTV HPTSNSSTATS PGFTSSAHPE PPPPSPSPSP TSKETIGDYT WTNGSQPCVH LQAQIQIRVM YTTQGGGEAW GISVLNPNKT KVQGSCEGAH PHLLLSFPYG HLSFGFMQDL QQKVVYLSYM AVEYNVSFPH AAQWTFSAQN ASLRDLQAPL GQSFSCSNSS IILSPAVHLD LLSLRLQAAQ LPHTGVFGQS FSCPSDRS
Isotype:	IgG
Cross-Reactivity:	Human, Mouse, Rat
Characteristics:	Polyclonal Antibodies
Purification:	Affinity purification

Target Details

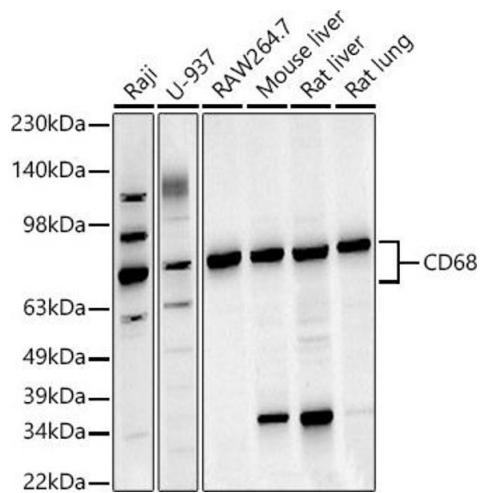
Target:	CD68
Alternative Name:	CD68 (CD68 Products)
Background:	<p>This gene encodes a 110-kD transmembrane glycoprotein that is highly expressed by human monocytes and tissue macrophages. It is a member of the lysosomal/endosomal-associated membrane glycoprotein (LAMP) family. The protein primarily localizes to lysosomes and endosomes with a smaller fraction circulating to the cell surface. It is a type I integral membrane protein with a heavily glycosylated extracellular domain and binds to tissue- and organ-specific lectins or selectins. The protein is also a member of the scavenger receptor family. Scavenger receptors typically function to clear cellular debris, promote phagocytosis, and mediate the recruitment and activation of macrophages. Alternative splicing results in multiple transcripts encoding different isoforms.,CD68,GP110,LAMP4,SCARD1,Immunology & Inflammation,CD markers,CD68</p>
Molecular Weight:	31 kDa/34 kDa/37 kDa
Gene ID:	968
UniProt:	P34810

Application Details

Application Notes:	WB,1:500 - 1:2000,IHC,1:50 - 1:200,IF,1:50 - 1:200
Restrictions:	For Research Use only

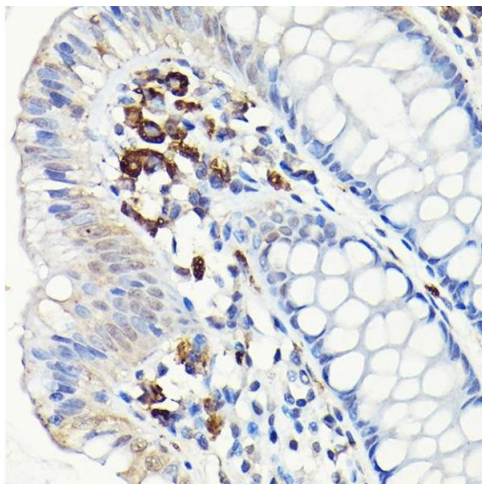
Handling

Format:	Liquid
Buffer:	PBS with 0.02 % sodium azide,50 % glycerol, pH 7.3.
Preservative:	Sodium azide
Precaution of Use:	This product contains Sodium azide: a POISONOUS AND HAZARDOUS SUBSTANCE which should be handled by trained staff only.
Storage:	-20 °C
Storage Comment:	Store at -20°C. Avoid freeze / thaw cycles.



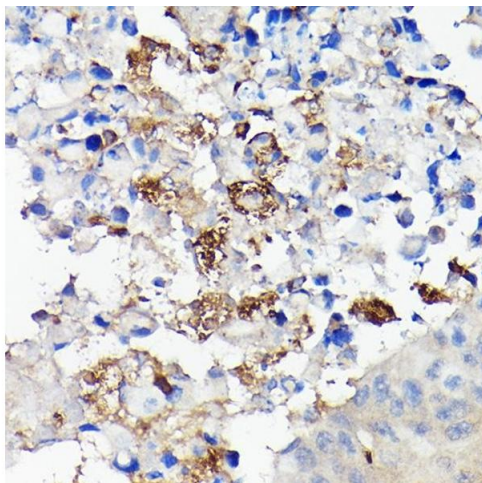
Western Blotting

Image 1. Western blot analysis of extracts of various cell lines, using CD68 antibody (ABIN6132070, ABIN6138218, ABIN6138221 and ABIN6217224) at 1:1000 dilution. Secondary antibody: HRP Goat Anti-Rabbit IgG (H+L) (ABIN1684268 and ABIN3020597) at 1:10000 dilution. Lysates/proteins: 25 µg per lane. Blocking buffer: 3 % nonfat dry milk in TBST. Detection: ECL Basic Kit (RM00020). Exposure time: 30s.



Immunohistochemistry

Image 2. Immunohistochemistry of paraffin-embedded human colon using CD68 Rabbit pAb (ABIN6132070, ABIN6138218, ABIN6138221 and ABIN6217224) at dilution of 1:50 (40x lens). Perform high pressure antigen retrieval with 10 mM citrate buffer pH 6.0 before commencing with IHC staining protocol.



Immunohistochemistry

Image 3. Immunohistochemistry of paraffin-embedded human lung cancer using CD68 Rabbit pAb (ABIN6132070, ABIN6138218, ABIN6138221 and ABIN6217224) at dilution of 1:50 (40x lens). Perform high pressure antigen retrieval with 10 mM citrate buffer pH 6.0 before commencing with IHC staining protocol.

Please check the [product details page](#) for more images. Overall 4 images are available for ABIN6138218.