



[Go to Product page](#)

Datasheet for ABIN6138269
anti-CDCA2 antibody (AA 724-1023)

1 Image

Overview

Quantity:	100 µL
Target:	CDCA2
Binding Specificity:	AA 724-1023
Reactivity:	Human
Host:	Rabbit
Clonality:	Polyclonal
Conjugate:	This CDCA2 antibody is un-conjugated
Application:	Western Blotting (WB)

Product Details

Immunogen:	Recombinant fusion protein containing a sequence corresponding to amino acids 724-1023 of human CDCA2 (NP_689775.2).
Sequence:	SDSPKPALTL QGQEFSSAGG QNAENLCQFF KISPDNLNIC ERKDDFLGAA EGKLQCNRLM PNSQKDCHCL GDVLIENTKE SKSQSEDLGR KPMESSSVVS CRDRKDRRRS MCYSYDGRSLH LEKNGNHTPS SSVGSSVEIS LENSELFKDL SDAIEQTFQR RNSETKVRRS TRLQKDLNE GLVWISLPLP STSQKAKRRT ICTFDSSGFE SMSPIKETVS SRQKPQMAPP VSDPENSQGP AAGSSDEPGK RRKSFICSTL ANTKATSQFK GYRRRSSLNG KGESLTALE RIEHNGERKQ
Isotype:	IgG
Cross-Reactivity:	Human
Characteristics:	Polyclonal Antibodies
Purification:	Affinity purification

Target Details

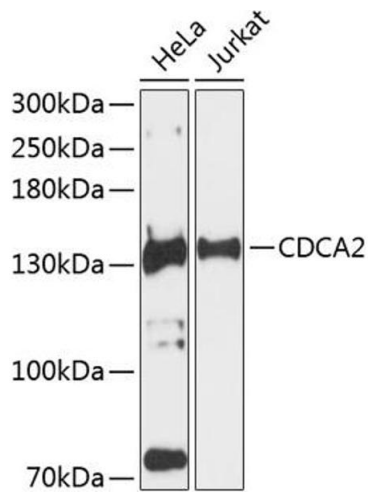
Target:	CDCA2
Alternative Name:	CDCA2 (CDCA2 Products)
Background:	This gene encodes a targeting subunit of the cell-cycle associated protein, protein phosphatase 1, with a role in targeting this protein to chromatin during anaphase. These two proteins comprise a phosphatase complex that is involved in nuclear envelope reformation and regulation of the DNA damage response. The encoded protein may also play a role in cancer progression. Alternative splicing results in multiple transcript variants.,CDCA2,PPP1R81,Repo-Man,Epigenetics & Nuclear Signaling,Cell Biology & Developmental Biology,Apoptosis,Cell Cycle,Endocrine & Metabolism,CDCA2
Molecular Weight:	7 kDa/112 kDa
Gene ID:	157313
UniProt:	Q69YH5

Application Details

Application Notes:	WB,1:500 - 1:2000
Restrictions:	For Research Use only

Handling

Format:	Liquid
Buffer:	PBS with 0.02 % sodium azide,50 % glycerol, pH 7.3.
Preservative:	Sodium azide
Precaution of Use:	This product contains Sodium azide: a POISONOUS AND HAZARDOUS SUBSTANCE which should be handled by trained staff only.
Storage:	-20 °C
Storage Comment:	Store at -20°C. Avoid freeze / thaw cycles.



Western Blotting

Image 1. Western blot analysis of extracts of various cell lines, using CDC antibody (ABIN6131118, ABIN6138269, ABIN6138270 and ABIN6224963) at 1:3000 dilution. Secondary antibody: HRP Goat Anti-Rabbit IgG (H+L) (ABIN1684268 and ABIN3020597) at 1:10000 dilution. Lysates/proteins: 25 µg per lane. Blocking buffer: 3 % nonfat dry milk in TBST. Detection: ECL Basic Kit (RM00020). Exposure time: 90s.